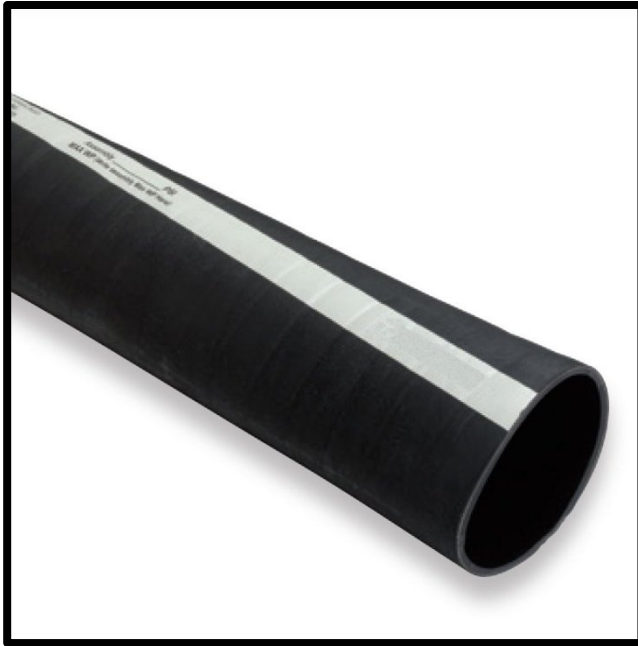




**Material Handling Hose Group**

**Bulk Material Handling Discharge Hose - 75 PSI**



NR/SBR blend, soft walled 2-ply hose for transfer of dry materials and slurries. Ideal for dry cement, pebble lime and other abrasive media.

Conductive for static dissipation.

Premium EPDM results in reliable service life for connecting the blower to flow lines on dry-bulk trailers.

Standard lengths of 100 feet.

Available in cut lengths. By-the-foot and by-the-yard.

Working pressure of 75 PSI.

**Tech Data:**

Tube: Black, NR/SBR compound, abrasion resistant  
 Cover: Black, NR/SBR, abrasion resistant  
 Reinforcement: High tensile tire cord plies  
 Safety Factor: 4:1  
 Temperature: -40°F to 180°F  
 Marking: DRY CEMENT DELIVERY HOSE STATIC CONDUCTIVE TUBE 75 PSI WP

<b>BULK MATERIAL HANDLING DISCHARGE HOSE - 75 PSI</b>					
<b>Part Number</b>	<b>ID Size</b>	<b>OD Size</b>	<b>Tube Thickness</b>	<b>Weight lb/ft</b>	<b>Price per Foot</b>
H-M-BDIS75-48-2	4"	4.44"	1/8"	1.72	\$ 17.18
H-M-BDIS75-48-3	4"	4.62"	3/16"	2.20	\$ 22.12
H-M-BDIS75-48-4	4"	4.79"	1/4"	2.61	\$ 26.48
H-M-BDIS75-48-2	5"	5.47"	1/8"	2.27	\$ 27.90
H-M-BDIS75-48-3	5"	5.62"	3/16"	2.75	\$ 33.40
H-M-BDIS75-48-4	5"	5.79"	1/4"	3.25	\$ 45.11

**For cut lengths add +15% to pricing**