

Hoses for Material Handling Applications

Polyurethane with PVC Cover Hose - up to 40 PSI	53
Black Polyurethane Hose with PVC cover and helix - up to 50 PSI	54
Lightweight Clear Polyurethane Hose with PVC helix - up to 20 PSI	55
Heavy Duty PVC Food Grade Suction Hose - 45 PSI	56
Heavy Duty PVC Food Grade Suction Hose with Grounding - 45 PSI	57
Polyurethane Food Grade Suction & Discharge Hose with Grounding - 45 PSI	58
Polyurethane Hose with blue PVC cover & PVC helix - 40 PSI	59
SBR Vacuum Hose with PVC helix - 45 PSI	60
Polyurethane High Flexibility Vacuum Hose with PVC helix - 30 PSI	61
Polyurethane Lined PVC hose with PVC Helix - 40 PSI	62
Synthetic Rubber Hot Tar & Asphalt Hose - 150 PSI	63
EPDM Hot Air Blower Hose - 150 PSI	64
Bulk Material Handling Discharge Hose - 75 PSI	65
Sandblast Hose - 150 PSI	66
Commodity Discharge Hose - 150 PSI	67
Commodity Suction Hose - 150 PSI	68
FDA Commodity Hose - 150 PSI	69
Elephant Trunk Hose - 50 PSI	70
Dredge Hose - 125 Hose	71
Concrete Placement Hose - Wire Reinforced - 1230 PSI	72
Textile Concrete Hose - 1230 PSI	73

Material Handling Hose Group

Polyurethane with PVC Cover Hose - up to 40 PSI



Abrasion resistant, polyurethane tube for material handling in dry applications, such as sandblast recovery lines, roof rock cleaning and other abrasive applications.

Constructed of static dissipating material that remains flexible at low temperature for ease of handling.

Sold in standard lengths only.

Standard lengths are 50 and 100 feet for sizes up to 5" ID. 20', 50' and 100' lengths for 6" size. 20' standard length for 8" size.

Tech Data:

Tube: Polyurethane, smooth
 Cover: Black, flexible PVC with black helix
 Safety Factor: 3:1
 Temperature: -40°F to 150°F

Polyurethane with PVC Cover - Material Handling Hose						
Part Number	ID Size	OD Size	Working Pressure	Vacuum in/HG	Weight lb/ft	Price per Foot
H-M-PUPVC-32	2"	2.40"	40	30	0.51	\$ 9.16
H-M-PUPVC-40	2 1/2"	3.10"	40	30	0.77	\$ 11.75
H-M-PUPVC-48	3"	3.55"	40	30	0.87	\$ 14.64
H-M-PUPVC-64	4"	4.68"	35	30	1.55	\$ 25.71
H-M-PUPVC-80	5"	5.71"	30	28	2.30	\$ 40.04
H-M-PUPVC-96	6"	7.05"	30	28	3.40	\$ 49.42
H-M-PUPVC-128	8"	9.05"	30	28	4.88	\$ 82.47

Material Handling Hose Group

Black Polyurethane with PVC Cover & Helix Hose - up to 50 PSI



Abrasion resistant, polyurethane tube for material handling in dry applications, such as vacuum trucks, pneumatic conveying systems, fly ash collection and other abrasive applications.

Constructed of static dissipating material that remains flexible at low temperature for ease of handling.

Sold in standard lengths only.

Standard lengths are 50 and 100 feet for sizes up to 6" ID. 20' standard length for 8" size.

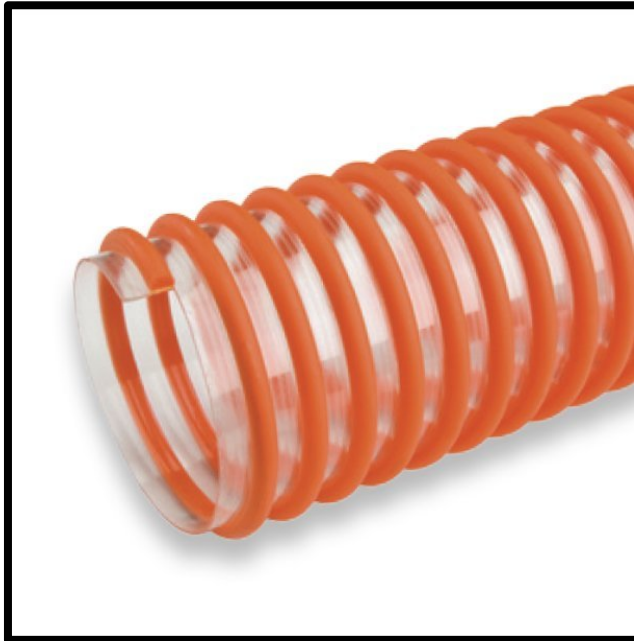
Tech Data:

Tube: Polyurethane, smooth
 Cover: Black, flexible PVC with black helix
 Safety Factor: 3:1
 Temperature: -40°F to 150°F

Black Polyurethane with PVC Cover - Material Handling Hose						
Part Number	ID Size	OD Size	Working Pressure	Vacuum in/HG	Weight lb/ft	Price per Foot
H-M-BPUPVC-24	1 1/2"	1.86"	50	30	0.42	\$ 6.00
H-M-BPUPVC-32	2"	2.40"	40	30	0.60	\$ 9.81
H-M-BPUPVC-40	2 1/2"	3.10"	40	30	0.82	\$ 12.48
H-M-BPUPVC-48	3"	3.55"	40	30	1.20	\$ 16.54
H-M-BPUPVC-64	4"	4.68"	35	30	1.96	\$ 27.28
H-M-BPUPVC-80	5"	5.71"	35	28	2.45	\$ 42.59
H-M-BPUPVC-96	6"	7.05"	30	28	3.50	\$ 52.58
H-M-BPUPVC-128	8"	9.05"	30	28	5.99	\$ 87.82

Material Handling Hose Group

Lightweight Polyurethane Hose - up to 20 PSI



Extremely flexible hose, ideal for leaf collection, lawn cleaning and concrete surface preparation equipment.

The smooth bore provides high abrasion resistance and unrestricted flow.

Standard length is 50 feet.

Tech Data:

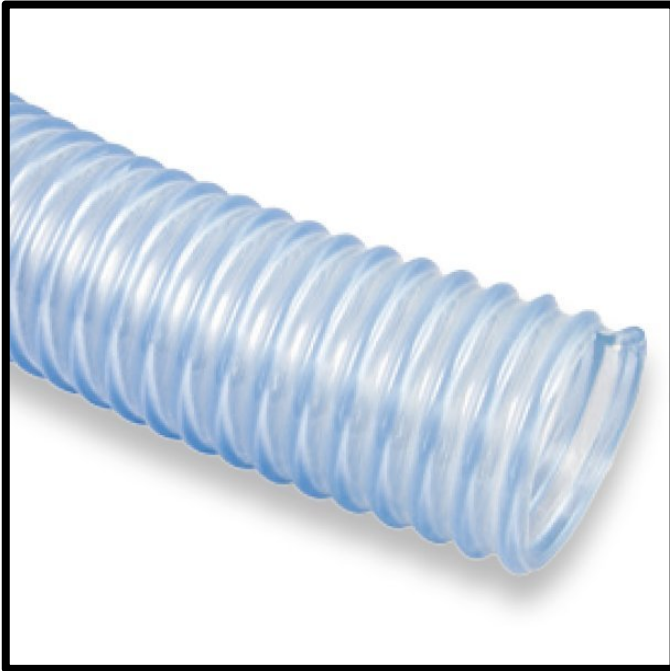
Construction: Clear, Polyurethane (ester based), exposed orange PVC right-hand helix
 Safety Factor: 3:1
 Temperature: -4°F to 150°F
 Marking: LIGHTWEIGHT POLYURETHANE HOSE - <ID> - LOT

Clear Polyurethane with PVC Spiral - Material Handling Hose						
Part Number	ID Size	OD Size	Working Pressure	Vacuum in/HG	Weight lb/ft	Price per Foot
H-M-PU-OR-24	1 1/2"	1.91"	20	22	0.23	\$ 5.93
H-M-PU-OR-32	2"	2.46"	15	21	0.32	\$ 7.07
H-M-PU-OR-40	2 1/2"	3.01"	9	19	0.34	\$ 8.03
H-M-PU-OR-48	3"	3.60"	8	19	0.48	\$ 9.32
H-M-PU-OR-64	4"	4.72"	7	13	0.70	\$ 13.41
H-M-PU-OR-80	5"	5.94"	6	10	0.89	\$ 18.23
H-M-PU-OR-96	6"	7.17"	5	7	1.15	\$ 23.46
H-M-PU-OR-128	8"	9.33"	3	5	1.65	\$ 38.13



Material Handling Hose Group

Heavy Duty PVC Food Grade Suction Hose - 45 PSI



Heavy duty food grade suction hose for dry or wet materials.

Hose complies with applicable FDA and 3A requirements and USDA for use in meat and poultry plants.

Clear PVC and clear helix allows for visual confirmation of flow.

Smooth bore eliminates build-up and clogging.

Highly flexible.

Standard length is 100 feet for sizes up to 6". 20' and 100' standard length for 6" and 8" size.

Bend radius is double the ID size.

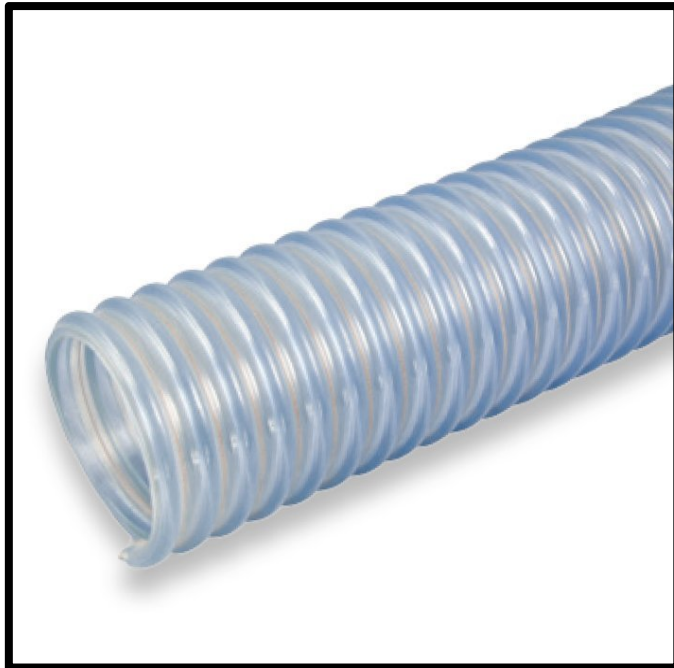
Tech Data:

Construction: Clear PVC with exposed clear PVC right-hand helix
 Safety Factor: 3:1
 Temperature: -4°F to 150°F
 Marking: FOOD GRADE SUCTION HOSE - <ID> - LOT
 Compliance: FDA, USDA, 3A.
 For full compliance data see abthermal.com/fda-usda-food-hose.html

Clear Food Grade PVC with PVC Spiral - Material Handling Hose						
Part Number	ID Size	OD Size	Working Pressure	Vacuum in/HG	Weight lb/ft	Price per Foot
H-M-PVCFD-24	1 1/2"	1.82"	45	29	0.35	\$ 3.03
H-M-PVCFD-32	2"	2.35"	40	2	0.50	\$ 4.02
H-M-PVCFD-40	2 1/2"	2.87"	35	29	0.68	\$ 6.12
H-M-PVCFD-48	3"	3.50"	35	29	1.00	\$ 8.34
H-M-PVCFD-64	4"	4.63"	30	29	1.52	\$ 13.62
H-M-PVCFD-80	5"	5.63"	30	25	2.17	\$ 23.10
H-M-PVCFD-96	6"	6.73"	30	25	3.05	\$ 31.02
H-M-PVCFD-128	8"	9.04"	20	25	5.32	\$ 47.46

Material Handling Hose Group

Heavy Duty PVC Food Grade Suction Hose with Grounding - 45 PSI



Heavy duty food grade suction hose for dry or wet materials and a built-in grounding wire which eliminates static electricity when properly connected.

Hose complies with applicable FDA and 3A requirements and USDA for use in meat and poultry plants.

Clear PVC and clear helix allows for visual confirmation of flow.

Smooth bore eliminates build-up and clogging.

Highly flexible.

Standard length is 100 feet. 6" also available in 20' standard lengths.

Bend radius is double the ID size.

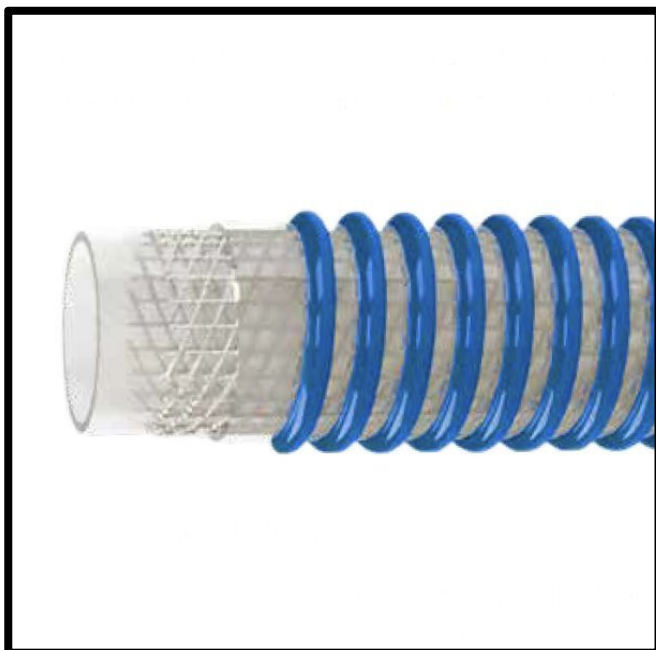
Tech Data:

Construction: Clear PVC with exposed clear PVC right-hand helix with grounding wire
 Safety Factor: 3:1
 Temperature: -4°F to 150°F
 Marking: GROUNDED FOOD GRADE SUCTION HOSE - <ID> - LOT
 Compliance: FDA, USDA, 3A.
 For full compliance data see abthermal.com/fda-usda-food-hose.html

Clear Food Grade PVC with PVC Spiral & Grounding - Material Handling Hose						
Part Number	ID Size	OD Size	Working Pressure	Vacuum in/HG	Weight lb/ft	Price per Foot
H-M-PVCFDG-24	1 1/2"	1.82"	45	29	0.44	\$ 4.70
H-M-PVCFDG-32	2"	2.35"	40	2	0.58	\$ 6.21
H-M-PVCFDG-40	2 1/2"	2.87"	35	29	0.75	\$ 8.95
H-M-PVCFDG-48	3"	3.50"	35	29	1.07	\$ 12.39
H-M-PVCFDG-64	4"	4.63"	30	29	1.52	\$ 19.43
H-M-PVCFDG-80	5"	5.63"	30	25	2.39	\$ 30.29
H-M-PVCFDG-96	6"	6.73"	30	25	3.12	\$ 39.88

Material Handling Hose Group

Polyurethane Food Grade Suction & Discharge Hose with Grounding - 45 PSI



Heavy duty food grade suction hose for dry or wet materials and a built-in grounding wire which eliminates static electricity when properly connected.

Hose complies with applicable FDA and 3A requirements and USDA for use in meat and poultry plants.

Clear PVC and clear helix allows for visual confirmation of flow.

Smooth bore eliminates build-up and clogging. Highly flexible.

Standard length is 100 feet.

Bend radius is double the ID size.

Tech Data:

Construction: Clear Polyurethane with blue PVC right-hand helix with grounding wire
 Reinforcement: Synthetic yarn
 Safety Factor: 3:1
 Temperature: -40°F to 150°F
 Marking: POLYURETHANE FOOD GRADE SUCTION/DISCHARGE HOSE - <ID> - LOT
 Compliance: FDA, USDA
 For full compliance data see abthermal.com/fda-usda-food-hose.html

Clear Food Grade Polyurethane with PVC Spiral & Grounding						
Part Number	ID Size	OD Size	Working Pressure	Vacuum in/HG	Weight lb/ft	Price per Foot
H-M-SD-PUFDG-48	3"	3.78"	100	29	1.18	\$ 33.55
H-M-SD-PUFDG-64	4"	4.85"	75	29	1.58	\$ 53.78
H-M-SD-PUFDG-80	5"	5.80"	70	28	2.47	\$ 76.69
H-M-SD-PUFDG-96	6"	6.93"	70	28	2.86	\$ 100.09

Bend Radius: 3" hose is 10". 4" hose is 12". 5" hose is 14". 6" hose is 14"

Material Handling Hose Group

Polyurethane Lined blue PVC Hose with PVC helix - 40 PSI



Premium material handling hose with a thick smooth polyurethane tube.

Ideal for dry applications where high abrasion resistance is required.

Formulated for static dissipation.

Standard lengths of 100 feet for sizes up to 4". 20', 50' and 100' lengths for sizes 5" and 6".

High flexibility in cold temperatures.

Tech Data:

Tube: Clear Polyurethane liner tube
 Cover: Blue, HMW PVC, static dissipating
 Reinforcement: PVC helix
 Safety Factor: 3:1
 Temperature: -40°F to 150°F
 Marking: URE-HD-BLUE - <ID> - LOT

Polyurethane lined blue PVC with PVC helix - 40 PSI						
Part Number	ID Size	OD Size	Working Pressure	Vacuum in/HG	Weight lb/ft	Price per Foot
H-M-PPU-PVC-32	2"	2.43	40	29	0.59	\$ 11.32
H-M-PPU-PVC-48	3"	3.70"	40	29	1.23	\$ 19.13
H-M-PPU-PVC-64	4"	4.80"	35	29	2.02	\$ 31.21
H-M-PPU-PVC-80	5"	5.80"	35	28	2.57	\$ 48.89
H-M-PPU-PVC-96	6"	6.87"	30	28	3.84	\$ 60.95

Bend Radius: 2" hose is 4". 3" hose is 6". 4" hose is 10". 5" hose is 15". 6" hose is 18"

Tube Thickness: 2" hose is 1.2mm. 3" hose is 1.8mm. 4" hose is 2.00mm. 5" hose is 2.0mm. 6" hose is 2.3mm

Material Handling Hose Group

SBR Vacuum Hose with PVC helix - 45 PSI



Specially compounded SBR to result in a vacuum hose for wet and dry material applications. Vacuum trucks, hydro-excavators, sewer and storm drain cleaning.

Static dissipating carbon black in the compound makes it suitable for sand, gravel, dry cement, metallic chips, grains and light abrasives.

Standard lengths are 100 feet for sizes up to 3". 50 and 100 feet standard lengths for sizes 4" to 6". 50 foot standard length for 8" size.

Tech Data:

Construction: SBR blended tube, static dissipating, with PVC right-hand helix
 Safety Factor: 3:1
 Temperature: -40°F to 158°F
 Marking: ULTRAVAC SBR - <ID> - LOT

SBR Vacuum Hose with PVC Helix - 45 PSI						
Part Number	ID Size	OD Size	Working Pressure	Vacuum in/HG	Weight lb/ft	Price per Foot
H-M-SBR-PVC-24	1 1/2"	1.82	45	29	0.35	\$ 5.44
H-M-SBR-PVC-32	2"	2.43	40	29	0.52	\$ 8.89
H-M-SBR-PVC-40	2 1/2"	2.95	35	29	0.90	\$ 11.25
H-M-SBR-PVC-48	3"	3.50"	35	29	1.08	\$ 15.01
H-M-SBR-PVC-64	4"	4.63"	30	29	1.80	\$ 24.51
H-M-SBR-PVC-80	5"	5.76"	30	28	2.45	\$ 38.59
H-M-SBR-PVC-96	6"	6.73"	30	28	3.05	\$ 47.75
H-M-SBR-PVC-128	8"	9.04"	30	27	5.63	\$ 79.58

Bend Radius: 1 1/2" hose is 2". 2" hose is 2 1/2". 2 1/2" hose is 3". 3" hose is 4". 4" hose is 5". 5" hose is 6". 6" hose is 9". 8" hose is 15"



Material Handling Hose Group

Polyurethane High Flexibility Vacuum Hose with PVC helix - 30 PSI



Heavy-duty abrasion resistant suction hose for use in a variety of wet and dry vacuum applications including vacuum trucks, hydro-excavators, sewer and storm drain cleaners, street sweepers.

Can handle a variety of materials such as crushed stone, sand, gravels, dry-cement, gains and slurries.

The formulation of the tube includes compounds that make it permanently conductive for static dissipation.

Standard lengths are 100 feet for sizes up to 6". 50 and 100 feet standard lengths for size 8".

Not recommended for constant contact with fuels or petroleum products.

Tech Data:

Construction: Polyurethane tube with a rigid PVC left-hand helix, conductive
 Safety Factor: 3:1
 Temperature: -40°F to 158°F
 Marking: POLYURETHANE SUCTION HOSE - <ID> - LOT

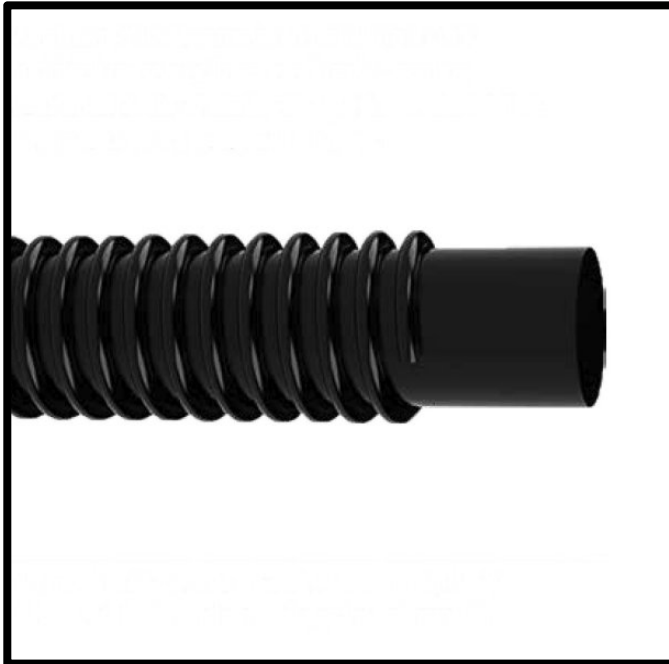
Polyurethane High Flexibility Vacuum Hose with PVC Helix - 30 PSI						
Part Number	ID Size	OD Size	Working Pressure	Vacuum in/HG	Weight lb/ft	Price per Foot
H-M-PU-PVC-VAC-32	2"	2.56"	30	29	0.74	\$ 11.40
H-M-PU-PVC-VAC-48	3"	3.59"	30	29	1.11	\$ 19.02
H-M-PU-PVC-VAC-64	4"	4.73"	30	29	1.80	\$ 29.22
H-M-PU-PVC-VAC-80	5"	5.51"	30	27	2.32	\$ 45.69
H-M-PU-PVC-VAC-96	6"	6.76"	15	27	2.86	\$ 56.61
H-M-PU-PVC-VAC-128	8"	8.87"	15	27	4.27	\$ 95.25

Bend Radius: 1 1/2" hose is 2". 2" hose is 3". 2 1/2" hose is 3". 3" hose is 4". 4" hose is 5". 5" hose is 6". 6" hose is 9". 8" hose is 15"



Material Handling Hose Group

Polyurethane Lined PVC Hose with PVC helix - 40 PSI



Abrasion resistant suction hose for use in a variety of dry vacuum applications including sandblast recovery lines, roof rock clearing and other abrasive applications.

Polyurethane lined PVC tube with PVC right-hand helix.

The formulation of the tube includes compounds that make it permanently conductive for static dissipation.

Standard lengths are 50 and 100 feet for sizes up to 5". 20, 50 and 100 feet standard lengths for size 6". 20 and 50 feet standard length for 8" size.

Tech Data:

Construction: Polyurethane lined PVC tube with a rigid PVC right-hand helix, conductive
 Safety Factor: 3:1
 Temperature: -40°F to 150°F

Polyurethane Lined PVC Hose with PVC Helix - 40 PSI						
Part Number	ID Size	OD Size	Working Pressure	Vacuum in/HG	Weight lb/ft	Price per Foot
H-M-PU-PVC-B-32	2"	2.40"	40	29	0.51	\$ 9.16
H-M-PU-PVC-B-40	2 1/2"	3.10"	40	29	0.77	\$ 11.75
H-M-PU-PVC-B-48	3"	3.55"	40	29	0.87	\$ 14.64
H-M-PU-PVC-B-64	4"	4.68"	35	29	1.55	\$ 25.71
H-M-PU-PVC-B-80	5"	5.71"	30	28	2.30	\$ 40.04
H-M-PU-PVC-B-96	6"	7.05"	30	28	3.40	\$ 49.42
H-M-PU-PVC-B-128	8"	9.05"	30	28	4.88	\$ 82.47

Bend Radius: 2" hose is 2". 2 1/2" hose is 4". 3" hose is 5". 4" hose is 6". 5" hose is 10". 6" hose is 12". 8" hose is 15".



Material Handling Hose Group

Synthetic Rubber Hot Tar & Asphalt Hose - 150 PSI



Rugged hose specifically designed for the transfer of petroleum based products such as high temperature asphalt, tar, hot oils.

Suitable for suction and discharge on rail cars, tank trucks, bulk stations, storage tanks and disposing units.

Standard lengths of 100 and 200 feet.

Available in cut lengths. By-the-foot and by-the-yard.

Working pressure of 150 PSI. Vacuum rating 29 in/HG.

Tech Data:

Tube: Black, synthetic rubber, heat and abrasion resistant
 Cover: Black, anti-static, smooth with cloth. Abrasion, weather and heat resistant
 Safety Factor: 4:1
 Temperature: -20°F to 350°F (intermittent)
 Marking: HOT TAR & ASPHALT HOSE 150 PSI WP

Synthetic Rubber Hot Tar Asphalt Hose - 150 PSI					
Part Number	ID Size	OD Size	Bend Radius	Weight lb/ft	Price per Foot
H-M-TAR-32	2"	2.72"	10"	1.80	\$ 37.26
H-M-TAR-48	3"	3.78"	15"	2.94	\$ 45.77
H-M-TAR-64	4"	4.79"	20"	3.89	\$ 75.01



Material Handling Hose Group

EPDM Hot Air Blower Hose - 150 PSI



Premium EPDM results in reliable service life for connecting the blower to flow lines on dry-bulk trailers.

Standard lengths of 100 and 200 feet.

Available in cut lengths. By-the-foot and by-the-yard.

Working pressure of 150 PSI. Vacuum rating 30 in/HG.

Tech Data:

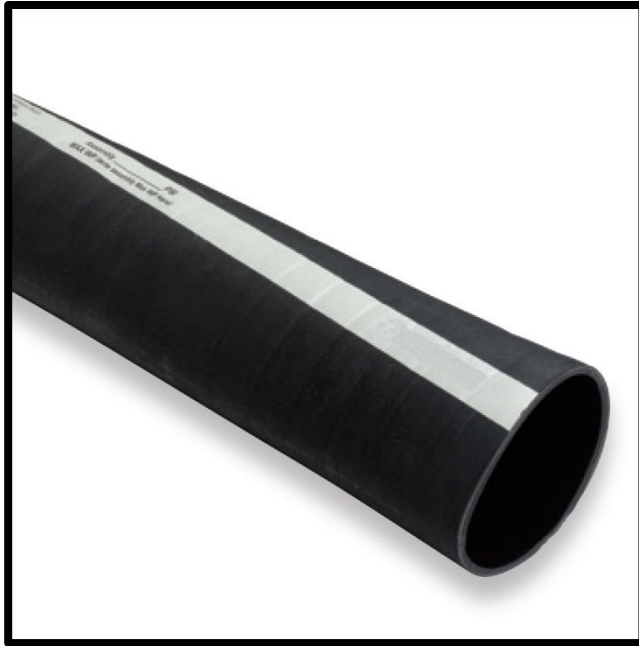
Tube: Black, EPDM, high heat resistant
 Cover: Black or Brown, EPDM, high heat-resistant
 Safety Factor: 4:1
 Temperature: -40°F to 225°F (350F intermittent)
 Marking: HOT AIR BLOWER HOSE 150 PSI WP

EPDM Hot Air Blower Hose - 150 PSI					
Part Number	ID Size	OD Size	Bend Radius	Weight lb/ft	Price per Foot
H-M-HAIR-48	3"	3.51"	12"	1.75	\$ 19.71
H-M-HAIR-64	4"	4.56"	16"	2.40	\$ 31.67



Material Handling Hose Group

Bulk Material Handling Discharge Hose - 75 PSI



NR/SBR blend, soft walled 2-ply hose for transfer of dry materials and slurries. Ideal for dry cement, pebble lime and other abrasive media.

Conductive for static dissipation.

Premium EPDM results in reliable service life for connecting the blower to flow lines on dry-bulk trailers.

Standard lengths of 100 feet.

Available in cut lengths. By-the-foot and by-the-yard.

Working pressure of 75 PSI.

Tech Data:

Tube: Black, NR/SBR compound, abrasion resistant
 Cover: Black, NR/SBR, abrasion resistant
 Reinforcement: High tensile tire cord plies
 Safety Factor: 4:1
 Temperature: -40°F to 180°F
 Marking: DRY CEMENT DELIVERY HOSE STATIC CONDUCTIVE TUBE 75 PSI WP

BULK MATERIAL HANDLING DISCHARGE HOSE - 75 PSI					
Part Number	ID Size	OD Size	Tube Thickness	Weight lb/ft	Price per Foot
H-M-BDIS75-48-2	4"	4.44"	1/8"	1.72	\$ 17.18
H-M-BDIS75-48-3	4"	4.62"	3/16"	2.20	\$ 22.12
H-M-BDIS75-48-4	4"	4.79"	1/4"	2.61	\$ 26.48
H-M-BDIS75-48-2	5"	5.47"	1/8"	2.27	\$ 27.90
H-M-BDIS75-48-3	5"	5.62"	3/16"	2.75	\$ 33.40
H-M-BDIS75-48-4	5"	5.79"	1/4"	3.25	\$ 45.11



Material Handling Hose Group

Sandblast Hose - 150 PSI



Can be used with grit, aluminum oxide, glass beads, etc., and is ideal for rugged service in shipyards and construction sites.

Conductive for static dissipation.

Standard lengths of 50 feet. 1 1/2" ID size standard length of 100 feet also available.

Working pressure of 150 PSI.

Tech Data:

Tube: Black, SBR/GUM, abrasion resistant, static-dissipating
 Cover: Black, SBR, pinpricked for early failure detection
 Reinforcement: High tensile tire cord plies
 Safety Factor: 4:1
 Temperature: -40°F to 190°F
 Marking: PREMIUM GRADE SANDBLAST HOSE 150 PSI WP

Sandblast Hose - 150 PSI					
Part Number	ID Size	OD Size	Weight lb/ft	Fabric Plies	Price per Foot
H-M-SBLAST-08	1/2"	1 1/8"	0.40	2	\$ 7.05
H-M-SBLAST-12	3/4"	1 1/2"	0.57	4	\$ 9.45
H-M-SBLAST-16	1"	1 7/8"	0.94	4	\$ 11.40
H-M-SBLAST-20	1 1/4"	2 1/8"	1.18	4	\$ 11.85
H-M-SBLAST-24	1 1/2"	2 3/8"	1.35	4	\$ 14.10

Material Handling Hose Group

Commodity Discharge Hose - up to 150 PSI



Soft wall hose with high abrasion resistance tube. Ideal for applications where discharging of abrasive media is required.

Conductive for static dissipation.

Standard lengths of 100 feet.

Available in cut lengths. By-the-foot and by-the-yard.

2 ply construction.

Tech Data:

Tube: Black, NR/SBR, abrasion resistant, static-dissipating
 Cover: Black, SBR
 Reinforcement: High tensile tire cord plies
 Safety Factor: 4:1
 Temperature: -40°F to 180°F
 Marking: WET-DRY BULK COMMODITY DISCHARGE HOSE STATIC CONDUCTIVE
 TUBE XXX PSI WP

Commodity Discharge Hose - Up to 150 PSI						
Part Number	ID Size	OD Size	Tube Thickness	Working Pressure	Weight lb/ft	Price per Foot
H-M-COMMDIS-32	2"	2.70"	3/16"	150	1.51	\$ 19.22
H-M-COMMDIS-40	2 1/2"	3.20"	3/16"	125	1.82	\$ 23.55
H-M-COMMDIS-48	3"	3.72"	3/16"	125	2.20	\$ 28.89
H-M-COMMDIS-64	4"	4.70"	3/16"	100	2.79	\$ 32.26
H-M-COMMDIS-72	4 1/2"	5.20"	1/4"	75	3.40	\$ 40.08
H-M-COMMDIS-80	5"	5.70"	1/4"	75	3.78	\$ 43.11
H-M-COMMDIS-96	6"	6.70"	1/4"	75	4.06	\$ 52.00



Material Handling Hose Group

Commodity Suction Hose - up to 150 PSI



Soft wall hose with high abrasion resistance tube. Ideal for applications where discharging of abrasive media is required. Not for food or potable water. Conductive for static dissipation.

Standard lengths of 100 feet up to 4" size. 50 foot standard length from 5" to 12" size.

Sizes 5" to 12" are convoluted cover for extra flexibility.

Available in cut lengths. By-the-foot and by-the-yard.

2 ply construction.

Vacuum rating 28 in./HG for sizes 2" to 5". 25 in./HG for size 6" size. 20 in./HG for sizes 8" to 12".

Tech Data:

Tube: Black, NR/SBR, abrasion resistant, static-dissipating
 Cover: Black, SBR
 Reinforcement: High tensile tire cord plies
 Safety Factor: 4:1
 Temperature: -20°F to 180°F
 Marking: WET-DRY BULK COMMODITY SUCTION HOSE STATIC CONDUCTIVE TUBE
 XXX PSI WP

Commodity Discharge Hose - Up to 150 PSI						
Part Number	ID Size	OD Size	Tube Thickness	Working Pressure	Weight lb/ft	Price per Foot
H-M-COMMSU-32	2"	2.79"	3/16"	150	1.87	\$ 24.06
H-M-COMMSU-40	2 1/2"	3.11"	3/16"	125	2.26	\$ 28.41
H-M-COMMSU-48	3"	3.72"	3/16"	125	2.64	\$ 29.70
H-M-COMMSU-64	4"	4.92"	3/16"	100	4.02	\$ 38.67
H-M-COMMSU-80	5"	5.06"	1/4"	75	5.18	\$ 55.53
H-M-COMMSU-96	6"	6.12"	1/4"	75	6.43	\$ 66.48
H-M-COMMSU-128	8"	9.01"	1/4"	50	9.89	\$ 95.67
H-M-COMMSU-160	10"	11.15"	1/4"	50	13.79	\$ 148.95
H-M-COMMSU-192	12"	13.23"	1/4"	50	17.41	\$ 190.74



Material Handling Hose Group
FDA Commodity Hose - up to 150 PSI



The premier premium material handling hose in the industry. Suitable for abrasive materials, wet or dry.

Also used for food materials, flour, plastic pellets, sandblasting.

Tube meets FDA for food and potable water.

Standard lengths of 100 feet up to 4" size. 50 foot standard length from 5" to 8" size. 25 foot lengths for 10" and 12" sizes.

Available in cut lengths. By-the-foot and by-the-yard.

Vacuum rating 30 in./HG for sizes 2" to 4". 28 in./HG for 5" size. 20 in./HG for sizes 8" to 12".

Tech Data:

Tube: White, natural gum rubber
 Cover: Green, SBR
 Reinforcement: High tensile tire cord plies plus helix wire
 Safety Factor: 4:1
 Temperature: -40°F to 190°F
 Marking: MATERIALS/FDA TRANSFER - NATURAL RUBBER TUBE

FDA Commodity Hose - Up to 150 PSI						
Part Number	ID Size	OD Size	Tube Thickness	Working Pressure	Weight lb/ft	Price per Foot
H-M-COMM-32	2"	2.84"	1/4"	150	2.60	\$ 27.09
H-M-COMM-40	2 1/2"	3.40"	1/4"	150	3.10	\$ 34.80
H-M-COMM-48	3"	3.87"	1/4"	150	3.62	\$ 37.80
H-M-COMM-64	4"	4.93"	1/4"	100	5.57	\$ 63.96
H-M-COMM-80	5"	5.93"	1/4"	75	7.00	\$ 89.37
H-M-COMM-96	6"	6.92"	5/16"	50	7.25	\$ 113.49
H-M-COMM-128	8"	9.09"	3/8"	50	10.80	\$ 162.03
H-M-COMM-160	10"	11.31"	3/8"	50	15.10	\$ 228.12
H-M-COMM-192	12"	13.43"	3/8"	50	18.20	\$ 311.94

Bend radius: 2" is 5", 2 1/2" is 8", 3" is 10.5", 4" is 12", 5" is 13.5", 6" is 15", 8" is 17", 10" is 19", 12" is 25"



Material Handling Hose Group

Elephant Trunk Hose - 50 PSI



Premium quality hose with 1/8" tube thickness for high abrasion and cut resistance. Ideal for gravity flow of materials such as concrete and abrasives.

Standard lengths of 50 feet for 8 and 10" size. Standard length of 25 feet for 12, 14 and 16" size

Available in cut lengths. By-the-foot and by-the-yard.

Tech Data:

Tube: Tan, pure gum
 Cover: Black, NR/SBR compound
 Reinforcement: High tensile synthetic plies
 Safety Factor: 3:1
 Temperature: -20°F to 180°F
 Marking: ELEPHANT TRUNK HOSE 50 PSI WP

Elephant Trunk Hose - Up to 50 PSI						
Part Number	ID Size	OD Size	Tube Thickness	Working Pressure	Weight lb/ft	Price per Foot
H-M-ELPH-128	8"	8.51"	1/8"	50	3.84	\$ 57.00
H-M-ELPH-160	10"	10.51"	1/8"	50	5.50	\$ 70.89
H-M-ELPH-192	12"	12.51"	1/8"	50	6.00	\$ 86.91
H-M-ELPH-224	14"	14.51"	1/8"	50	7.00	\$ 116.88
H-M-ELPH-256	16"	16.51"	1/8"	50	8.15	\$ 135.90

Bend radius: 2" is 5", 2 1/2" is 8", 3" is 10.5", 4" is 12", 5" is 13.5", 6" is 15", 8" is 17", 10" is 19", 12" is 25"

Material Handling Hose Group

Dredge Hose - 125 PSI



Rugged and abrasion resistant tube and cover for flexible connections between pipes used in dredging applications.

Tube wall thickness 3/8".

Standard lengths of 50 feet.

Available in cut lengths. By-the-foot and by-the-yard.

Tech Data:

Tube: Black, SBR compound, 3/8" thick, abrasion resistant
 Cover: Black, SBR compound, 3/32" thick, weather and abrasion resistant
 Reinforcement: High tensile synthetic plies
 Safety Factor: 3:1
 Temperature: -20°F to 180°F
 Marking: None

Dredge Hose - 125 PSI				
Part Number	ID Size	OD Size	Weight lb/ft	Price per Foot
H-M-DREDGE-128	6 5/8"	8.00"	8.20	\$ 97.50
H-M-DREDGE-160	8 5/8"	10.19"	11.60	\$ 127.53
H-M-DREDGE-192	10 3/4"	12.31"	14.60	\$ 169.92
H-M-DREDGE-224	12 3/4"	14.50"	18.60	\$ 229.23

Material Handling Hose Group

Concrete Placement Hose - Wire Reinforced - 1230 PSI / 85 BAR



Heavy-duty hose designed to handle the most abrasive applications and weather conditions.

Suitable for handling wet concrete in areas where flex is critical.

Ideal for use on high pressure concrete pumps or boom trucks where a tough, durable hose is required for high pressure concrete pumping and placing applications

Working pressure of 1230 PSI / 85 BAR. Burst pressure of 2650 PSI / 170 BAR. Meets ASME B3.27-2009 specifications

Standard lengths of 100 feet up to 4" size. 50 foot standard lengths for 5" size. Available in cut lengths. By-the-foot and by-the-yard.

Tech Data:

Tube:	Black, GUM/SBR blend, wear resistant
Cover:	Black, SBR, cut and gouge resistant
Reinforcement:	Multiple steel wire plies
Safety Factor:	2:1 (per ASME standards)
Temperature:	-40°F to 200°F
Marking:	CONCRETE PLACEMENT HOSE - WIRE XX" 1230 PSI (85 BAR) WP XX LBS/FT (F.W.C.) MEETS OR EXCEEDS ASME B30.27-2009

Concrete Placement Hose - Wire Reinforced - 1230 PSI / 85 BAR						
Part Number	ID Size	OD Size	Bend Radius	Working Pressure	Weight lb/ft	Price per Foot
H-M-HD-CON-32	2"	2.75"	12"	1230	1.86	\$ 29.73
H-M-HD-CON-40	2 1/2"	3.37"	16"	1230	2.67	\$ 37.11
H-M-HD-CON-48	3"	3.94"	18"	1230	3.37	\$ 47.12
H-M-HD-CON-64	4"	5.06"	24"	1230	5.31	\$ 64.46
H-M-HD-CON-80	5"	6.12"	30"	1230	6.57	\$ 85.10



Material Handling Hose Group

Textile Concrete Hose - 1230 PSI / 85 BAR



Heavy-duty hose designed to handle the abrasive applications such as plaster, grout and concrete.

Standard lengths of 100 feet.

50 foot lengths also available for 2" and 3" sizes.

Available in cut lengths. By-the-foot and by-the-yard.

Working pressure is 1230 PSI / 85 BAR. Burst pressure is 2650 PSI / 170 BAR

Tech Data:

Tube: Black, GUM/SBR blend, wear resistant
 Cover: Black, SBR, cut and gouge resistant
 Reinforcement: Multiple steel wire plies
 Safety Factor: 2:1 (per ASME standards)
 Temperature: -40°F to 200°F
 Marking: CONCRETE PLACEMENT HOSE - WIRE XX" 1230 PSI (85 BAR) WP XX LBS/FT (F.W.C.) MEETS OR EXCEEDS ASME B30.27-2009

Textile Concrete Hose - 1230 PSI / 85 BAR WP					
Part Number	ID Size	OD Size	Bend Radius	Weight lb/ft	Price per Foot
H-M-TCON-20	1 1/4"	2.00"	8"	0.86	\$ 15.48
H-M-TCON-24	1 1/2"	2.19"	10"	0.92	\$ 17.37
H-M-TCON-32	2"	2.76"	12"	1.45	\$ 17.94
H-M-TCON-40	2 1/2"	3.34"	14"	1.71	\$ 30.51
H-M-TCON-48	3"	4.00"	15"	2.40	\$ 53.79
H-M-TCON-56	3 1/2"	4.15"	16"	3.07	\$ 76.50
H-M-TCON-64	4"	5.16"	18"	4.06	\$ 76.53
H-M-TCON-72	4 1/2"	5.59"	21"	4.22	\$ 117.99
H-M-TCON-80	5"	6.30"	24"	5.60	\$ 122.76
H-M-TCON-96	6"	7.33"	30"	6.80	\$ 158.76