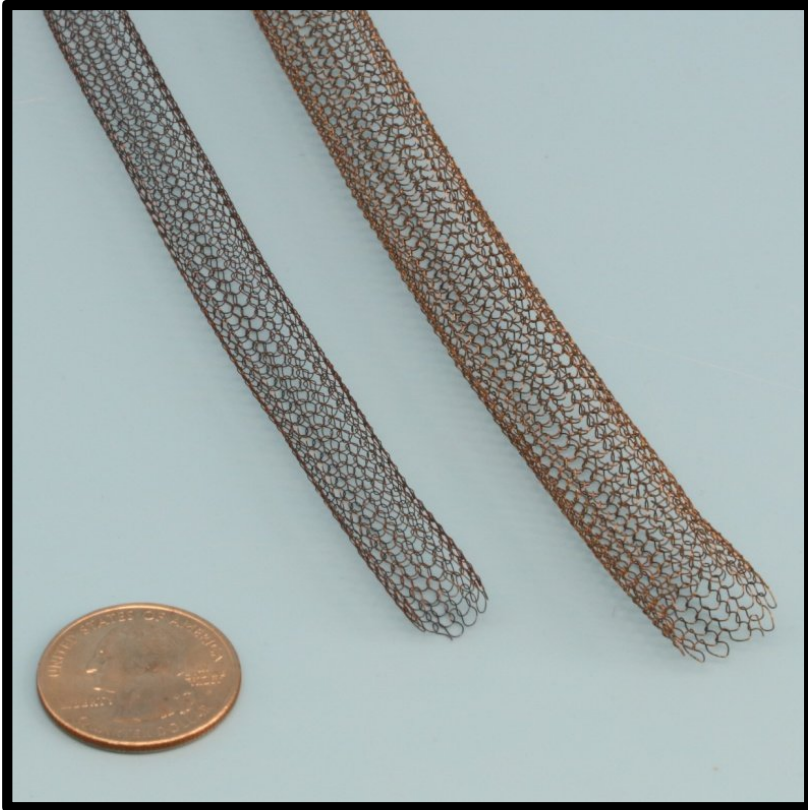


Stainless Steel Hollow Knitted Mesh Sleeve - 304

1200°F / 648°C:



- Excellent Compressability and pushback with no compression set.
- Provides abrasion protection.
- Excellent EMI / RFI Gasket.
- Used as a bulb material in some tadpole and gasket ropes instead of solid mesh rope for added compressability of the bulb.
- 304 Stainless

304 Stainless Steel Hollow Knitted Mesh Sleeve			
ID Size inch / mm		Part Number	Feet per Carton
1/4"	6	S-M-SS-HOLLOW-M006-04	1000
3/8"	10	S-M-SS-HOLLOW-M010-06	1000
1/2"	13	S-M-SS-HOLLOW-M013-08	500
5/8"	16	S-M-SS-HOLLOW-M016-10	500
3/4"	19	S-M-SS-HOLLOW-M019-12	500

Please call for additional discount pricing when ordering more than 2 cartons.