

SplashGard™ HD Sleeve with Velcro® Hook & Loop Closure

500°F / 260°C Continuous Rating – Higher Temperature for Shorter Periods
High Temperature, Heat, Flame, Fire, Weld Splatter and Molten Splash & Slag Resistant



SplashGard™ HD sleeve is a high temperature sleeve with a flame retardant hook and loop or Velcro® hook and loop closure that is suitable to protect hoses and cables from molten splash.

It may be installed and removed without disconnecting the hose, cable or wire. The sleeve is fabricated from a heavy duty woven fabric which is then coated with a thick layer of self extinguishing silicone rubber elastomer.

Due to the woven base material and deep elastomer impregnation, this material is stiff and provides no elasticity compared to our standard duty version. This sleeve should be slightly oversized if it will require flexing or installation on curved installations. It is designed for straight or slightly curved sections or runs of hose, pipe or cables, and is difficult to use in a curved path.

Typical applications include protection of Electric Arc Furnace cables, robotic welding cables, steel mill roll-stand hydraulic hoses, steel mill cooling water hoses, vehicle under-hood wiring, cable and hoses. The same material is also used to fabricate custom protection covers for enclosures and equipment protection where serviceability is required.

The closure remains inside of the sleeve and is protected by the fabric overlap. Thread used is a high temperature e-fiberglass. Flame retardant hook & loop is utilized meeting MIL-F-21840, AA-55126, NFPA 1971-1991, FMVSS 302, FAA 25.853a.

This product may be suitable to protect personnel from hot pipe burns and OSHA compliance. Please contact our technical support in order to calculate temperature drop profile in your application.

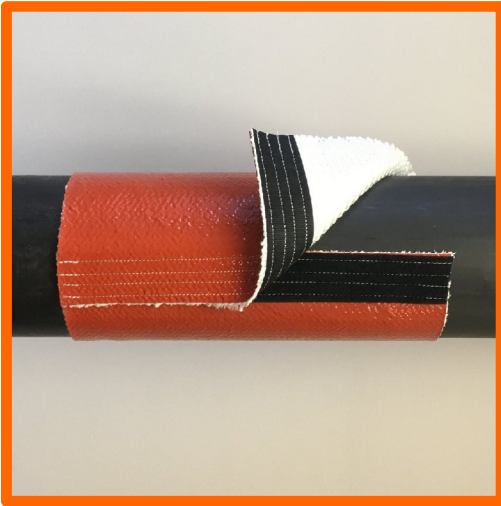
Also an excellent cold temperature sleeve with flexibility to -76°C for refrigeration and cryogenic applications.

This is a custom fabrication item – please allow 3 to 10 business days from date of order. Contact us to determine the specific production time for your order.

The long edge of the sleeve has some fray of the underlying fiberglass, which does not affect the performance of the sleeve, and is only an aesthetic consideration.

The standard closure is nylon. Nomex® and Stainless Steel is available. For Nomex® add \$7.00 per foot to listed price. For Stainless Steel add \$36.00 per foot to listed price. Sleeve with Nomex® or Stainless Steel closure will have 1" wide closure material. Delivery time for other than standard will be a few additional days. See our catalog page for Nomex® and Stainless Steel closure for temperature ratings and other specifications.

SplashGard™ HD Sleeve with Velcro® Hook & Loop Closure
500°F / 260°C Continuous Rating – Higher Temperature for Shorter Periods
High Temperature, Heat, Flame, Fire, Weld Splatter and Molten Slag Resistant



500°F / 260°C continuous rating with weld splatter / molten metal splash protection.
2200°F / 1205°C for periods up to 15 minutes and short excursions to 3000°F / 1650°C.

SplashGard™ HD Sleeve with Velcro® Hook / Loop Closure
Small Diameter

Nominal ID inches / mm / Dash #			Part Number	Hook & loop Width, inches	Price per Foot	Price per Metre
1 1/2	38	-24	S-FGSRHD-VCL-M038-24	3/4	\$ 24.83	\$ 81.44
1 3/4	44	-28	S-FGSRHD-VCL-M044-28	3/4	\$ 26.77	\$ 87.81
2	51	-32	S-FGSRHD-VCL-M051-32	3/4	\$ 29.21	\$ 95.81
2 1/4	57	-36	S-FGSRHD-VCL-M057-36	3/4	\$ 31.23	\$ 102.43
2 1/2	64	-40	S-FGSRHD-VCL-M064-40	3/4	\$ 33.49	\$ 109.85
2 3/4	70	-44	S-FGSRHD-VCL-M070-44	3/4	\$ 35.80	\$ 117.42
3	76	-48	S-FGSRHD-VCL-M076-48	1	\$ 37.94	\$ 124.44
3 1/4	83	-52	S-FGSRHD-VCL-M083-52	1	\$ 40.34	\$ 132.32
3 1/2	89	-56	S-FGSRHD-VCL-M089-56	1	\$ 42.29	\$ 138.71
3 3/4	95	-60	S-FGSRHD-VCL-M095-60	1	\$ 44.51	\$ 145.99
4	102	-64	S-FGSRHD-VCL-M102-64	1	\$ 48.37	\$ 158.65
4 1/4	108	-68	S-FGSRHD-VCL-M108-68	1	\$ 50.54	\$ 165.77
4 1/2	114	-72	S-FGSRHD-VCL-M114-72	1	\$ 52.94	\$ 173.64
4 3/4	121	-76	S-FGSRHD-VCL-M121-76	1	\$ 55.17	\$ 180.96
5	127	-80	S-FGSRHD-VCL-M127-80	1	\$ 57.54	\$ 188.73

Available in continuous lengths up to 100 feet for up to 3.5" I.D.

Customer may specify a hook/loop width other than standard if desired (except for 1/2 and 3/4" sleeve).

Continued...

SplashGard™ HD Sleeve with Velcro® Hook & Loop Closure (Continued)
Large Diameter

Large Diameter Firesleeve with Velcro Hook & Loop Closure in sizes larger than 5 inches ID contains an overlap seam of the material opposite the closure.

500°F / 260°C continuous rating with weld splatter / molten metal splash protection.
 2200°F / 1205°C for periods up to 15 minutes and short excursions to 3000°F / 1650°C.

SplashGard™ HD Sleeve with Velcro® Hook & Loop Closure: Large Diameter						
Nominal ID inches / mm / Dash #			Part Number	Hook/Loop Width, inches	Price per Foot	Price per Metre
5 1/4	133	-84	S-FGSRHD-VCL-M133-84	2	\$ 59.37	\$ 194.73
5 1/2	140	-88	S-FGSRHD-VCL-M140-88	2	\$ 61.66	\$ 202.25
5 3/4	146	-92	S-FGSRHD-VCL-M146-92	2	\$ 63.94	\$ 209.72
6	152	-96	S-FGSRHD-VCL-M152-96	2	\$ 66.11	\$ 216.84
6 1/4	159	-100	S-FGSRHD-VCL-M159-100	2	\$ 68.51	\$ 224.71
6 1/2	165	-104	S-FGSRHD-VCL-M165-104	2	\$ 70.74	\$ 232.03
6 3/4	171	-108	S-FGSRHD-VCL-M171-108	2	\$ 72.74	\$ 238.59
7	178	-112	S-FGSRHD-VCL-M178-112	2	\$ 74.97	\$ 245.90
7 1/4	184	-116	S-FGSRHD-VCL-M184-116	2	\$ 76.97	\$ 252.46
7 1/2	191	-120	S-FGSRHD-VCL-M191-120	2	\$ 79.54	\$ 260.89
7 3/4	197	-124	S-FGSRHD-VCL-M197-124	2	\$ 81.77	\$ 268.21
8	203	-128	S-FGSRHD-VCL-M203-128	2	\$ 83.69	\$ 274.50
8 1/4	210	-132	S-FGSRHD-VCL-M210-132	2	\$ 86.26	\$ 282.93
8 1/2	216	-136	S-FGSRHD-VCL-M216-136	2	\$ 88.43	\$ 290.05
8 3/4	222	-140	S-FGSRHD-VCL-M222-140	2	\$ 90.23	\$ 295.95
9	229	-144	S-FGSRHD-VCL-M229-144	2	\$ 92.57	\$ 303.63
9 1/4	235	-148	S-FGSRHD-VCL-M235-148	2	\$ 94.49	\$ 309.93
9 1/2	241	-152	S-FGSRHD-VCL-M241-152	2	\$ 97.20	\$ 318.82
9 3/4	248	-156	S-FGSRHD-VCL-M248-156	2	\$ 99.37	\$ 325.93
10	254	-160	S-FGSRHD-VCL-M254-160	2	\$ 101.66	\$ 333.45
10 1/4	260	-164	S-FGSRHD-VCL-M260-164	2	\$ 104.00	\$ 341.12
10 1/2	267	-168	S-FGSRHD-VCL-M267-168	2	\$ 105.60	\$ 346.37
10 3/4	273	-172	S-FGSRHD-VCL-M273-172	2	\$ 113.31	\$ 371.66
11	279	-176	S-FGSRHD-VCL-M279-176	2	\$ 115.66	\$ 379.36
11 1/4	286	-180	S-FGSRHD-VCL-M286-180	2	\$ 118.51	\$ 388.71
11 1/2	292	-184	S-FGSRHD-VCL-M292-184	2	\$ 122.37	\$ 401.37
11 3/4	298	-188	S-FGSRHD-VCL-M298-188	2	\$ 126.22	\$ 414.01
12	305	-192	S-FGSRHD-VCL-M305-192	1.5	\$ 129.41	\$ 424.46

Available in continuous lengths up to 100 feet. Larger Diameters available by quote.

The standard closure is nylon. Nomex® and Stainless Steel is available. For Nomex® add \$7.00 per foot to listed price and for Stainless Steel add \$36.00 per foot to listed price for 1" wide closure. For Nomex® add \$14.00 per foot to listed price and for Stainless Steel add \$72.00 per foot to listed price for 2" wide closure (2" wide is constructed by using 2 x 1" wide). Delivery time for other than standard will be a few additional days. See our catalog page for Nomex® and Stainless Steel closure for temperature ratings and other specifications.