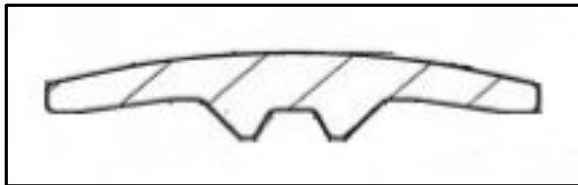


## Hard Shell Acetate Spiral Wrap - Hose and Cable Protection –



- Tuff-Wrap™ abrasion protection wrap is manufactured from highly impact resistant plasticised cellulose acetate, and is simply wrapped over hose or cable to provide a tough protection shell to reduce abrasion damage.
- This shell is much tougher than our HDPE or fabric abrasion protection sleeve and is ideal for harsh environments such as outdoor construction or where hoses and cables might be dragged repetitively over concrete plant floors. Rounded edges prevents hose and cable cover damage from flexing of spiral.
- Available in sizes to wrap individual or bundled hoses and cables with a total ID up to 6 inches or 152mm.
- Stays in place without sliding due to the 2 ribs at the rear that ride on the cover layer of the hose or cable.
- Springs back when twisted and pulled.
- Rockwell hardness between 75-120.
- UV and ozone resistant.

The unique profile shape of this product makes it a far superior spiral wrap to any flat profile wrap made of PE, PU or Nylon. Smooth rounded edges with a center double ridge on the inside of the profile and a curved shell allows the spiral to grip onto cables or hoses without damage but with flexibility.

Tuff-Wrap™ spiral wrap provides abrasion, scuff and wear resistance and helps to organize and bundle hoses and cables. Temperature range -30 to + 185°F continuous duty. This product is not self extinguishing.

<b>Tuff-Wrap™ Heavy Duty Acetate                      Hard Shell Spiral Wrap for Abrasion Protection</b> 40 foot standard lengths for sizes up to 1.75" ID / 25 foot lengths from 2.56" ID to 4" ID 15 foot standard length for 6" ID					
Part Number	ID Size inch / mm / -dash			Pitch in inches	Price per Length Black / Yellow
SW-AP-PCA-M006-04-X	0.25	6	-04	0.25	\$ 49.20 / \$ 91.66
SW-AP-PCA-M008-05-X	0.325	8	-05	0.25	\$ 53.37 / \$ 93.33
SW-AP-PCA-M010-06-X	0.37	10	-06	0.25	\$ 57.75 / \$ 95.72
SW-AP-PCA-M013-08-X	0.50	13	-08	0.50	\$ 61.50 / \$ 98.89
SW-AP-PCA-M016-10-X	0.62	16	-10	0.50	\$ 66.50 / \$ 109.93
SW-AP-PCA-M019-12-X	0.75	19	-12	0.62	\$ 79.75 / \$ 126.84
SW-AP-PCA-M025-16-X	1.00	25	-16	0.62	\$ 119.00 / \$ 177.33
SW-AP-PCA-M028-18-X	1.10	29	-18	0.62	\$ 189.20 / \$ 301.33
SW-AP-PCA-M035-22-X	1.38	35	-22	0.67	\$ 245.00 / \$ 385.66
SW-AP-PCA-M044-28-X	1.75	44	-28	0.80	\$ 275.80 / \$ 415.33
SW-AP-PCA-M048-30-X	1.88	48	-30	0.80	\$ 275.80 / \$ 415.33
SW-AP-PCA-M067-42-X *	2.56	67	-42	1.37	\$ 307.75 / \$ 443.13
SW-AP-PCA-M080-50-X *	3.15	80	-50	1.37	\$ 356.00 / \$ 552.47
SW-AP-PCA-M090-57-X *	3.54	90	-57	1.37	\$ 381.57 / \$ 572.27
SW-AP-PCA-M102-64-X *	4.00	102	-64	2.00	\$ 415.50 / \$ 613.17
SW-AP-PCA-M152-96-X **	6.00	152	-96	2.00	\$ 496.00 / \$ 733.44

For the "X" value in the part number: Use "BK" for Black, "YL" for Yellow

**Chemical Resistance:** Water – very good; Ionic metallic solution – very good; gasoline – very good; oil – very good; mineral & vegetable oil – very good; Superior alcohols – very good; Acetone – poor; Methyl acetate – poor; Ethyl acetate – poor; Chlorine solvent – poor; Strong Acids and Strong Bases – may have some corrosive action; Inferior alcohols – after prolonged immersion may expand product but do not act as solvent.