



# **Hose & Tubing**

## **Rubber & Plastic**

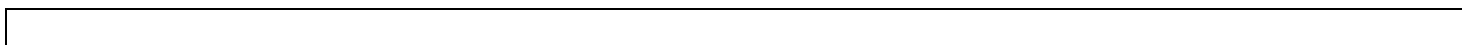
### **Industrial / Commercial**

**from AB Technology Group**

- **Firehose**
- **Fuel / Petroleum Line**
- **Water**
- **Chemical**
- **Air**
- **Material Handling**
- **Sanitary & Steam**
- **Hydraulic**

**Industrial • Commercial • Marine • Aerospace • Military**  
**Agriculture • Oil & Gas • Mining**

*Quality Products Proudly Made at USA & Canadian Plants*



**For Your Notes**

--

## Standard Product Listing

Item.....Page

### Petroleum Hose

Fuel Transfer Hose - 200 PSI .....	2
Fuel and Oil Delivery Transfer Hose - 250 PSI .....	3
Low Pressure Return Line or Suction Up to 300 PSI .....	4
GAMMA Oil Delivery Hose 150 PSI.....	5
Oilfield Suction Hose 150 PSI .....	6
High Flexibility Oilfield Suction Hose 150 PSI .....	7
Frac Tank Hose 150 PSI .....	8
Frac Tank Hose Assembly - 150 PSI .....	9
Oil Discharge Hose 200 PSI .....	10
Blender Fracturing Hose - 400 PSI .....	11
Multi-Purpose Discharge Hose - 500 PSI .....	12
Red Flexible Tank Truck Hose - 150 PSI .....	13
Red High Flexibility Tank Truck Hose - 150 PSI .....	14
Black Tank Truck Hose - 150 PSI .....	15
Black High Flexibility Tank Truck Hose - 150 PSI .....	16
Black Heavy Duty Tank Truck / Offshore Hose - 300 PSI .....	17
Black Heavy Duty High Flex Tank Truck / Offshore Hose - 300 PSI .....	18
Oil Suction & Discharge Hose - 250 PSI .....	19
Oil Suction & Discharge Hose Assembly with Flanges - 250 PSI .....	20
NBR Suction Hose - Up to 50 PSI .....	22
Tank Drop Hose - 65 PSI .....	23
Heavy Duty Tank Drop Hose - 65 PSI .....	24
Heavy Duty Tank Drop Hose - 150 PSI .....	25
Vapor Recovery Hose - Medium Duty .....	26
Vapor Recovery Hose - Heavy Duty .....	27
Banding Sleeves .....	28

### Water Hose

NBR Suction Hose Up to 50 PSI .....	30
Heavy Duty PVC Water Suction Hose - Up to 85 PSI .....	31
Heavy Duty Clear PVC Water Suction Hose - Up to 100 PSI .....	32
Blue PVC Lay Flat Discharge Hose - Up to 90 PSI .....	33
Red PVC Lay Flat Discharge Hose - Up to 150 PSI .....	34
EPDM Mill Discharge Hose - Up to 150 PSI .....	35
Heavy Duty PVC Water Suction Hose - Up to 100 PSI .....	36
Double Bolt Spiral Clamps .....	37
Heavy Duty Water Suction & Discharge Hose - Up to 150 PSI .....	38
Heavy Duty Water Suction & Discharge Hose, High Flexibility - Up to 150 PSI .....	39
Medium Duty Soft Wall 2-ply Discharge Hose, 150 PSI.....	40
Heavy Duty Soft Wall 4-ply Discharge Hose, 250 PSI .....	41

## Chemical Hose

Cross-Lined Polyethylene - 200 .....	43
Ultra-High Molecular Weight Polyethylene - 200 PSI .....	44

## General Service & Air Hose

General Service and Air Push-On Hose - 300 PSI .....	46
Multi Purpose Air and Fluid Hose - 300 PSI .....	47
General Service Air & Fluid Hose - 250 PSI .....	48
General Service Hose Assembly with Fittings - 50 Feet - 250 PSI .....	49
Textile Air Hose - 300 PSI .....	50
Heavy Duty Air Hose - Up to 1000 PSI .....	51

## Material Handling Hose

Polyurethane with PVC Cover Hose - up to 40 PSI .....	53
Black Polyurethane Hose - up to 50 PSI .....	54
Lightweight Polyurethane Hose - up to 20 PSI .....	55
Heavy Duty PVC Food Grade Suction Hose - 45 PSI .....	57
Heavy Duty PVC Food Grade Suction Hose with Grounding - 45 PSI .....	58
Polyurethane Food Grade Suction & Discharge Hose with Grounding - 45 PSI .....	59
Polyurethane Hose with PVC helix - 40 PSI .....	60
SBR Vacuum Hose with PVC helix - 45 PSI .....	61
Polyurethane High Flexibility Vacuum Hose with PVC helix - 30 PSI .....	62

## Sanitary & Steam Hose

2" x 3" to 6" x 8" .....	63
--------------------------	----

## Firefighting Hose

2" x 3" to 6" x 8" .....	64
--------------------------	----

## Hydraulic Hose Assemblies

SAE100R1AT/1SN One Wire Braided Hose Assembly .....	106
SAE100R16 Two Wire Braided Hose Assembly .....	107
SAE100R12 Four Spiral Hose Assembly .....	108
SAE100R4 Hydraulic Suction Hose Assembly .....	109
Universal Truck/Fleet/ Multi-Purpose Hose .....	110

## Hydraulic Hose

SAE100R1AT/1SN One Wire Braided Hose .....	106
--	-----

## Standard Terms and Conditions .....

## Account Application.....

## **NOTES**

**Premium vs. Industrial.** Premium and Industrial products provide the same dimensional values in terms of width, inside diameter, thickness or wall thickness; however, Premium products are fabricated from a higher bulk yarn and with a denser weave. Premium products will weigh more and are stiffer than the Industrial version as a result. Premium can be considered a Heavy Duty version of the Industrial item.

**Silica vs. Ceramic Fiber.** With almost the same temperature range, Ceramic Fiber offers a harder/stiffer material than Silica in the same form. Ceramic based materials are typically composed of approximately 50% SiO<sub>2</sub> and 50% Al<sub>2</sub>O<sub>3</sub> fibers while Silica based materials are almost 100% SiO<sub>2</sub> fibers. Ceramic based materials have a slightly higher continuous use and slightly higher excursion temperature range.

**PTFE Products.** Polytetrafluoroethylene (PTFE) is a fluorocarbon-based polymer material. A DuPont version of PTFE is known under the trademark of Teflon®. It is made by free radical polymerization of tetrafluoroethylene and has a carbon backbone chain. Each carbon has two fluorine atoms attached to it. It is hydrophobic (hates water), biologically inert, non-biodegradable and also has very low friction characteristics. The chemical inertness of PTFE is related to the strength of the fluorine-carbon bond and this is why nothing sticks to PTFE. When stretched, PTFE forms a strong porous material called expanded PTFE (ePTFE) which makes excellent mechanical sealing materials.

**Temperature Ratings.** The temperature ratings listed for these products is the maximum continuous "heat soaked" exposure. The ratings are deliberately conservative so that there will be a buffer of several hundred degrees to allow for over-temperature conditions without detrimental effect or failure of the material.

For most materials, short duration exposure to considerable higher temperatures is possible. Short duration can be several minutes to an hour, and depends on the particular circumstances and installation. One of the important considerations is "heat soak" – materials with thermal inertia will withstand extended temperature exposure without becoming heat soaked.

## **Materials**

**TecPac™.** TecPac is a compressed sheet, available in 1/64", 1/32", 1/16", 3/32" and 1/8" thick sheets, 60" x 60" square. It is a non-asbestos compressed sheet which has similar properties as asbestos in low temperature applications, and can be used for similar applications. It has anti-stick properties and can be used against gases, water, steam, organic acids, alkalis, aromatic and aliphatic hydrocarbons, oils, greases and refrigerants. Available cut to shape as a filler for slit and machined gaskets.

**TecGraph™.** TecGraph graphite laminate sheet is used for high temperature applications and offers excellent chemical resistance. Available in 1/64", 1/32", 1/16" and 1/8" thick sheets, 39.4" x 39.4" square. Purity is >98%, Ash content is <.5%, Temperature rating of 2500°C.

**TecBlue™.** TecBlue is a blend of polymers and reinforcing materials which provides high compressibility, conformability, heat and chemical resistance. Used in sealing glass-lined equipment in food and chemical processing. Not to be used as a primary gasket material alone – must only be used as a filler. Available in 1/16" and 1/8" thick sheet, 68" x 71" square. Available cut to shape as a filler for slit and machined gaskets.

**EPDM.** Ethylene Propylene. EPDM rubber is an elastomer which is characterized by wide range of applications. The E refers to Ethylene, P to Propylene, D to diene and M refers to its classification in ASTM standard D-1418. The "M" class includes rubbers having a saturated chain of the polymethylene type. EPDM exhibits satisfactory compatibility with fireproof hydraulic fluids, ketones, hot and cold water, and alkalis, and unsatisfactory compatibility with most oils, gasoline, kerosene, aromatic and aliphatic hydrocarbons, halogenated solvents, and concentrated acids. The main properties of EPDM are its outstanding heat, ozone and weather resistance. The resistance to polar substances and steam are also good. It has excellent electrical properties. It has the ability to retain light colour. Good weathering, ozone and acid resistance. Continuous operating temperature range 110° - 120° C, with specialty EPDM's having an upper range of 150° C.

**VITON.** Fluoroelastomer. Viton is a brand of synthetic rubber and fluoropolymer elastomer commonly used in O-rings and other moulded or extruded goods. The name is a registered trademark of DuPont Performance Elastomers L.L.C

Viton fluoroelastomers are categorized under the ASTM D1418 & ISO 1629 designation of FKM. The fluorine content of the most common Viton grades varies between 66 and 70%. Good oil, acid and solvent resistance at high temperatures. Continuous temperature application range of 200° - 210° C.

**Neoprene.** Neoprene (polychloroprene) is a family of synthetic rubbers that are produced by polymerization of chloroprene. It is used in a wide variety of applications, such as in wetsuits, computer mouse pads, electrical insulation, gaskets, etc. Neoprene is a DuPont trade name. Well suited for gasket applications due to its chemical inertness. Temp range -30°F to +170°F, excursions to +200°F. Tensile 1050 to 1500 psi. Excellent oil resistance, self extinguishing, non flammable, good weathering resistance.

**Buna-N (Nitrile).** Standard Nitrile is also known as Buna-N. Excellent resistance to petroleum-based oils and fuels, water and alcohols. Nitrile also has good resistance to acids and bases, except those with a strong oxidizing effect. Avoid highly polar solvents (Acetone, MEK, etc.) and direct exposure to ozone and sunlight. Usefull temperature range of -55° to 120°C (-65° to 248°F)

### **Selecting Materials**

Selecting materials and designing a protection system can be assisted by understanding the kind of heat in the situation.

**Ambient Heat.** This is the surrounding atmospheric temperature in the area, situation or environment. For example, in an office it might be 70°F, in a firewalk it might be 2000°F.

**Conductive Heat.** This is the heat from direct contact with an object: picking up a hot try from an industrial oven or kiln at 500°F or the surface of a furnace wall at 1000°F

**Radiant Heat.** Objects like the Sun, or fire, or molten metal streams, glowing slabs or billets of metal radiate heat waves, which can travel through space or air or objects, and is absorbed by people or other objects. A great example is that it feels cooler standing in shade on a hot day as the shade blocks the radiant heat waves from the sun.

**Molten Metal Splash or Weld Splatter.** Materials with high temperature silicone rubber coating provide excellent protection from molten metal splash and weld splatter as the splash/splatter does not stick to the silicone. As well, the silicone has a high thermal dispersion, quickly dissipating the heat and preventing burn-through. The heavier or larger the splash/splatter then the heavier grade of silicone coated material should be selected.



## Industrial Seals & Gaskets

Fax Orders: 610-679-8592 Telephone Orders: 610-340-9054 [www.IndustrialSealAndGasket.com](http://www.IndustrialSealAndGasket.com)

---

Technical Assistance: (888) 365-2038 or [info@IndustrialSealAndGasket.com](mailto:info@IndustrialSealAndGasket.com)

**Pricing:** Prices shown are \$USD and may be subject to change without notice.

**Credit Card, Fax & E-mail Orders:** We accept Visa, MasterCard, Discover & American Express. Fax your Purchase Order to 610-340-9054 or email to: [orders@IndustrialSealAndGasket.com](mailto:orders@IndustrialSealAndGasket.com).

**Verbal PO's:** Call 610-906-3549. We will accept verbal PO's from existing customers by using a generic PO form; once all the data has been entered from your verbal instructions it will be faxed to you for approval. Please authorize it and then fax it to us. Minimum order is \$100.00. Some products also have minimum order quantity levels.

**Account Set-up:** Please complete our Account Application (at rear of catalog) and return the form along with your standard credit reference sheet. Processing can take 2 to 3 business days.

**Most Orders Shipped Same Day:** The vast majority of products are always in stock and will ship same day providing you order on-line, by fax or call by 1PM EST. Fabricated items require more time – please call for a fabrication quote. Sleeve with Velcro can typically be produced in 2 to 3 days, however it can run 5 to 7 business days for large orders or if we are particularly busy. Other fabrications such as equipment covers, curtains, shields, muffler and turbo covers, etc. can take up to 10 business days. Please call for an estimate.

**Shipping:** Unless otherwise specified, orders will be shipped UPS ground, prepaid and billed or on your account. For Dealers or Distributors, Blind or Drop shipping to your customer is available – please specify on your PO if you will be providing a Packing List and send it to us ASAP. We can also use your carrier and account if you prefer.

**Products & Applications:** Our High Temperature Protection Materials have wide ranging application in industry, aviation, marine and military markets. They are most commonly used in steel making, metal processing & refining, smelting, foundries, robotic welding, heat treating, steam plants, power plants (fossil and nuclear), engine and vehicle manufacturing, tire and glass manufacturing, brick & tile manufacturing, petrochemical refining, etc. In fact, any industry with a hot process, boiler, oven or kiln can use our products. It is the customers' responsibility to ensure the suitability of products to applications.

**Customer Service Excellence:** We are focused on customer service; your assurance of the correct product, quality checked & delivered on-time. All products are RoHS compliant.

### We Offer Shipping From USA and Canadian Warehouses

Check for New Catalogs & Updates at our website – [www.IndustrialSealAndGasket.com](http://www.IndustrialSealAndGasket.com)

USA: 431 State Street Box 1491, Ogdensburg, NY 13669

CANADA: 116 Albert St - Suite 300, Ottawa, ON K1P 5G3

## **High, Very High & Extreme Temperature Protection Materials**

*Fax Orders: 610-679-8592 Telephone Orders: 610-340-9054 [www.IndustrialSealAndGasket.com](http://www.IndustrialSealAndGasket.com)*

---



## Hoses for Petroleum Applications

Fuel Transfer Hose - 200 PSI .....	2
Fuel and Oil Delivery Transfer Hose - 250 PSI .....	3
Low Pressure Return Line or Suction Up to 300 PSI .....	4
GAMMA Oil Delivery Hose 150 PSI .....	5
Oilfield Suction Hose 150 PSI .....	6
High Flexibility Oilfield Suction Hose 150 PSI .....	7
Frac Tank Hose 150 PSI .....	8
Frac Tank Hose Assembly - 150 PSI .....	9
Oil Discharge Hose 200 PSI .....	10
Blender Fracturing Hose - 400 PSI .....	11
Multi-Purpose Discharge Hose - 500 PSI .....	12
Red Flexible Tank Truck Hose - 150 PSI .....	13
Red High Flexibility Tank Truck Hose - 150 PSI .....	14
Black Tank Truck Hose - 150 PSI .....	15
Black High Flexibility Tank Truck Hose - 150 PSI .....	16
Black Heavy Duty Tank Truck / Offshore Hose - 300 PSI .....	17
Black Heavy Duty High Flex Tank Truck / Offshore Hose - 300 PSI .....	18
Oil Suction & Discharge Hose - 250 PSI .....	19
Oil Suction & Discharge Hose Assembly with Flanges - 250 PSI .....	20
NBR Suction Hose - Up to 50 PSI .....	22
Tank Drop Hose - 65 PSI .....	23
Heavy Duty Tank Drop Hose - 65 PSI .....	24
Heavy Duty Tank Drop Hose - 150 PSI .....	25
Vapor Recovery Hose - Medium Duty .....	26
Vapor Recovery Hose - Heavy Duty .....	27
Banding Sleeves .....	28

## Petroleum Hose Group

### Fuel Transfer Hose - 200PSI



Multi-use hose for transporting leaded, unleaded, lead substitute fuels, low pressure brake fluid or diesel fuel.

Farm and barrel pump applications, as well as construction and industrial service where UL approval is not required.

200 PSI Working Pressure.

Available in 200 foot coils.

May be available in cut lengths – please inquire.

#### Tech Data:

Tube:	Black, NBR (ARPM Class A); high oil resistance
Cover:	Black, SBR/Nitrile blend compound for oil and ozone resistance
Reinforcement:	Spiral polyester cords
Working Pressure:	200 PSI
Safety Factor:	3:1
Temperature:	-40°F to 190°F
Non-conductive:	1,800 megaOhm @ 1000 volts
Grounding:	Embedded copper wire
Marking:	FUEL TRANSFER HOSE (ID) 200PSI WP (white lettering)

Petroleum Hose Group			
Fuel Transfer Hose			
Part Number	ID Size	OD Size	Weight lbs/ft
H-P-FUEL-12-X	3/4"	1.06"	0.38
H-P-FUEL-16-X	1"	1.41"	0.52

For the "X" value in the part number: use "C" to specify full coil  
use "F" to specify length in feet

## Petroleum Hose Group

### Fuel & Oil Delivery Transfer Hose - 250 PSI



Designed for the transfer and delivery of fuels, oils, kerosene, diesel and other petroleum based products for home, commercial, industrial, marine, vehicle and construction use.

It has a braided synthetic reinforcement allowing for extreme flexibility, reduced twisting and ease of handling, with good kink resistance. Good abrasion and oil resistance with a 250 PSI working pressure.

100, 125, 150 and 175 foot coils.

May be available in other cut lengths – please inquire.

#### Tech Data:

Tube:	Black, NBR (ARPM Class A)
Cover:	Red, NBR (ARPM Class A)
Reinforcement:	2 braided polyester cords
Working Pressure:	250 PSI
Safety Factor:	4:1
Temperature:	-40°F to 180°F
Non-conductive:	1,800 megaOhm @ 1000 volts
Marking:	F.O.D. Fuel Oil Delivery Hose - (ID) - 250PSI WP (Lot #) (white lettering)

<b>Petroleum Hose Group</b> <b>Fuel Oil Delivery Hose - 250 PSI</b>			
Part Number	ID Size	OD Size	Weight lbs/ft
H-P-FOD-16-X	1"	1.50"	0.65
H-P-FOD-20-X	1 1/4"	1.79"	0.87
H-P-FOD-22-X	1 3/8"	1.88"	0.91
H-P-FOD-24-X	1 1/2"	2.09"	1.12

For the "X" value in the part number: use "CYYY" to specify full coil (YYY is length)  
use "FYYY" to specify length in feet

## Petroleum Hose Group

### Low Pressure Return Line or Suction Line - Up to 300 PSI



Meets or exceeds SAE 100R4 requirements for low pressure hydraulic return line or suction line for petroleum and water based hydraulic fluids.

NOTE: Assembly working pressure based on the fittings used.

29 in/HG Vacuum rating.

Standard length is 200 foot coil.

Cut length may be available.

#### Tech Data:

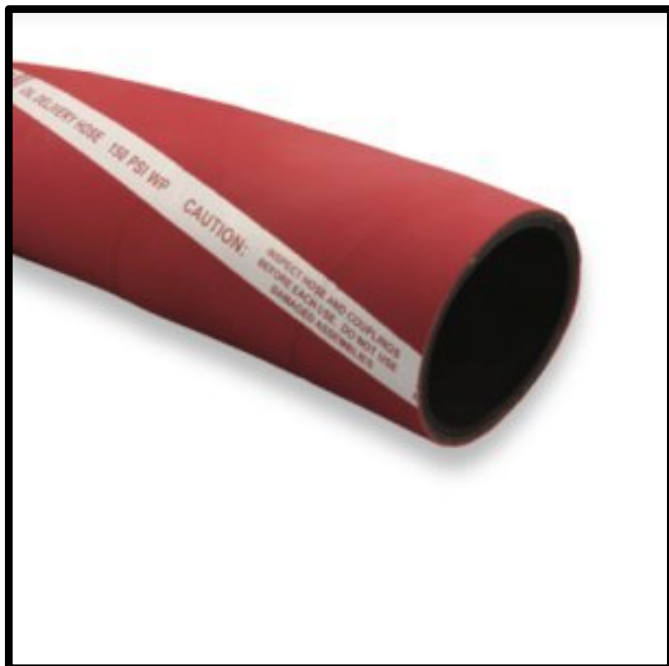
Tube:	Black, NBR (ARPM Class A); high oil resistance
Cover:	Black, SBR/Nitrile blend compound for oil and ozone resistance
Reinforcement:	High tensile tire cord plies with dual helix wires
Working Pressure:	250 PSI for smallest size; 150 PSI for largest size
Safety Factor:	4:1
Temperature:	-40°F to 212°F
Marking:	(ID) - SAE-100R4 XXXPSI WP (red lettering)

<b>Petroleum Hose Group</b> <b>Low Pressure Return / Suction - 300 PSI</b>					
Part Number	ID Size	OD Size	Working Pressure	Bend Radius	Weight lbs per foot
H-P-R4-12-X	3/4"	1.26"	300	2.17"	0.47
H-P-R4-16-X	1"	1.50"	245	3"	0.67
H-P-R4-20-X	1 1/4"	1.75"	200	3.35"	0.96
H-P-R4-24-X	1 1/2"	2.00"	150	3.74"	1.13
H-P-R4-32-X	2"	2.56"	100	5.51"	1.37

For the "X" value in the part number: use "C" to specify full coil  
use "F" to specify length in feet

## Petroleum Hose Group

### Oil Delivery Hose 150 PSI



Lightweight oil discharge hose for use in a variety of applications where an oil-resistant, soft wall discharge hose is required.

Standard 100 foot coils. Also available in cut lengths: By-the-foot and By-the-yard lengths available.

Not recommended for use on reels.

#### Tech Data:

Tube:	Black, NBR (ARPM Class A); high fuel & oil resistance
Cover:	Red, EPDM/NR/SBR compound. Black, oil, weather and abrasion resistance
Reinforcement:	High tensile tire cord plies with static wire
Working Pressure:	150 PSI
Safety Factor:	3:1
Temperature:	-30°F to 180°F
Marking:	OIL DELIVERY HOSE 150 PSI

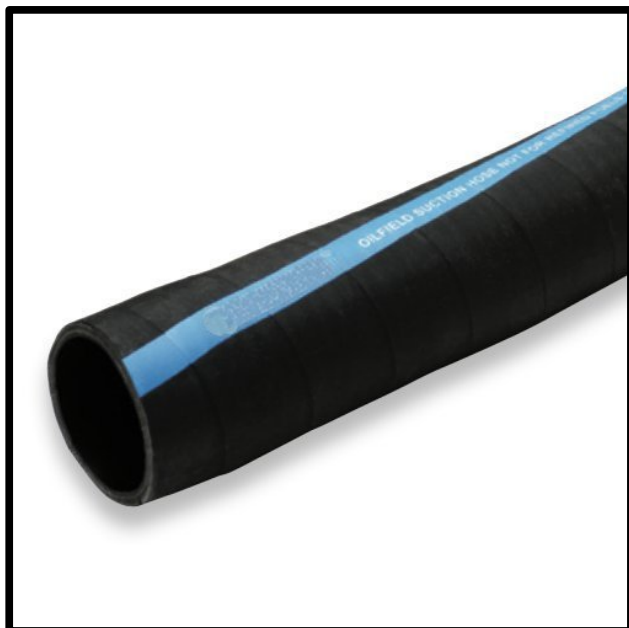
<b>Petroleum Hose Group</b> <b>Oil Delivery Hose - 150 PSI</b>			
Part Number	ID Size	OD Size	Weight lbs per foot
H-P-ODH-32-X	2"	2.50"	0.86
H-P-ODH-48-X	3"	3.50"	1.24
H-P-ODH-64-X	4"	4.53"	1.73

**For cut lengths add +15% to pricing**

For the "X" value in the part number: use "C" to specify full coil  
use "F" to specify length in feet

## Petroleum Hose Group

### Oilfield Suction Hose - 150 PSI



Rugged hose for oilfield service where full suction and working pressures are required.

Not recommended for refined petroleum products.

Standard length is 100 foot coil. Also available By-the-foot or By-the-yard.

#### Tech Data:

Tube:	Black, custom compounded elastomer; low oil swell
Cover:	Black, SBR/Nitrile blend compound for oil and ozone resistance.
Reinforcement:	High tensile tire cord plies with helix wire
Working Pressure:	150 PSI
Safety Factor:	4:1
Temperature:	-20°F to 180°F
Ends:	Soft cuffs on standard lengths
Marking:	OILFIELD SUCTION HOSE NOT FOR REFINED FUELS 150PSI WP
Vacuum Rating:	30 in/HG

Petroleum Hose Group				
Oilfield Suction Hose				
Part Number	ID Size	OD Size	Bend Radius	Weight lbs per foot
H-P-OSU-24-X	1 1/2"	1.88"	6"	0.67
H-P-OSU-32-X	2"	2.44"	7"	0.87
H-P-OSU-48-X	3"	3.50"	9"	1.52
H-P-OSU-64-X	4"	4.56"	14"	3.32

**For cut lengths add +15% to pricing**

**For the "X" value in the part number: use "C" to specify full coil  
use "F" to specify length in feet**

## Petroleum Hose Group

### High Flexibility Oilfield Suction Hose - 150 PSI



Rugged hose for oilfield service where full suction and working pressures are required.

Convoluted cover for improved flexibility.

Not recommended for refined petroleum products.

Standard 100 foot coils. Also available By-the-foot or By-the-yard.

#### Tech Data:

Tube:	Black, custom compounded elastomer; low oil swell
Cover:	Black, SBR/Nitrile blend compound for oil and ozone resistance. Convoluted.
Reinforcement:	High tensile tire cord plies with helix wire
Working Pressure:	150 PSI
Safety Factor:	4:1
Temperature:	-20°F to 180°F
Ends:	Soft cuffs on standard lengths
Marking:	OILFIELD SUCTION HOSE NOT FOR REFINED FUELS 150PSI WP
Vacuum Rating:	30 in/HG

<b>Petroleum Hose Group</b> <b>High Flexibility Oilfield Suction Hose</b>				
Part Number	ID Size	OD Size	Bend Radius	Weight lbs per foot
H-P-OSU-HF-32-X	2"	2.47"	2"	1.05
H-P-OSU-HF-48-X	3"	3.50"	3"	1.64
H-P-OSU-HF-64-X	4"	4.56"	4"	2.58
H-P-OSU-HF-96-X	6"	6.80"	8"	4.75

**For cut lengths add +15% to pricing**

For the "X" value in the part number: use "C" to specify full coil  
use "F" to specify length in feet

## Petroleum Hose Group

### Frac Tank Hose - 150 PSI



Heavy duty & rugged hose ideal for handling salt and fresh water, tank bottoms, crude oil, drilling muds and mild solutions of hydrochloric acids.

Convoluted cover for improved flexibility.

Not recommended for refined petroleum products.

Standard lengths of 100 foot coils and 39.4" sections. By-the-foot and by-the-metre lengths available.

#### Tech Data:

Tube:	Black, custom compounded elastomer; low oil swell
Cover:	Black, SBR/Nitrile blend compound for oil and ozone resistance. Convoluted.
Reinforcement:	High tensile tire cord plies with helix wire
Working Pressure:	150 PSI
Safety Factor:	4:1
Temperature:	-20°F to 190°F
Ends:	Soft cuffs on standard lengths
Marking:	PREMIUM FRAC TANK HOSE 150PSI WP NOT FOR REFINED FUELS
Vacuum Rating:	25 in/HG

Petroleum Hose Group				
Frac Tank Hose				
Part Number	ID Size	OD Size	Bend Radius	Weight lbs per foot
H-P-FRAC-128-X	8"	9"	18"	8.17
H-P-FRAC-128-39	8"	9"	18"	8.17

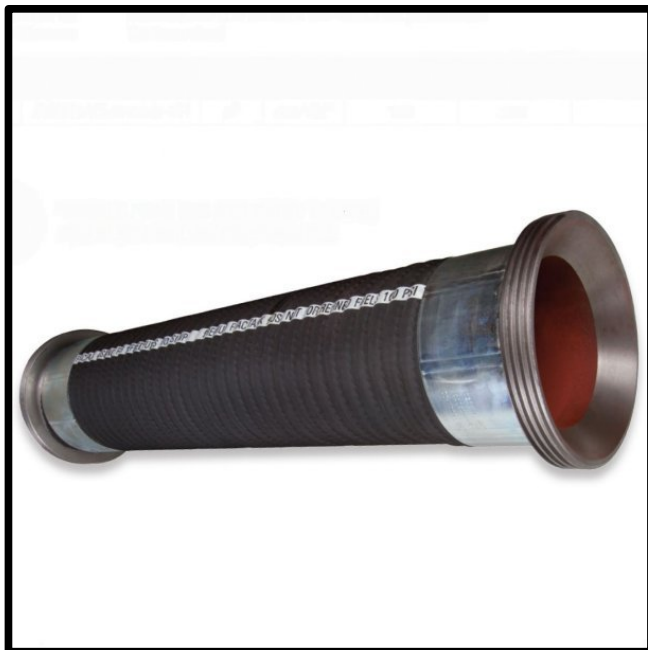
**For cut lengths add +15% to pricing**

For the "X" value in the part number: use "C" to specify full coil  
use "F" to specify length in feet



## Petroleum Hose Group

### Frac Tank Hose Assembly - 150 PSI



Hose assembly ideal for handling salt and fresh water, tank bottoms, crude oil, drilling muds and mild solutions of hydrochloric acids.

Convoluted cover for improved flexibility.

Assembled with female frac subs and carbon steel sleeves.

Not recommended for refined petroleum products.

The 39" hose with fittings will have an OAL of 43.5" +/- 1".

#### Tech Data:

Tube:	Black, custom compounded elastomer; low oil swell
Cover:	Black, SBR/Nitrile blend compound for oil and ozone resistance. Convoluted.
Reinforcement:	High tensile tire cord plies with helix wire
Working Pressure:	150 PSI
Safety Factor:	4:1
Temperature:	-40°F to 190°F
Ends:	Soft cuffs on standard lengths
Marking:	PREMIUM FRAC TANK HOSE 150PSI WP NOT FOR REFINED FUELS
Vacuum Rating:	25 in/HG

<b>Petroleum Hose Group</b> <b>Frac Tank Hose Assembly</b>			
Part Number	ID Size	OD Size	Weight
H-P-FRACAS-128	8"	9"	69 lbs

## Petroleum Hose Group

### Oil Discharge Hose - 200PSI



Soft wall discharge hose designed for use on trucks, docks and barges.

Standard lengths of 100 foot coils.

Also available By-the-foot and By-the-yard.

#### Tech Data:

Tube:	Black, Nitrile, 55% aromatics (ORS)
Cover:	Black, Neoprene
Reinforcement:	4 high tensile tire cord plies
Working Pressure:	200 PSI
Safety Factor:	4:1
Temperature:	-40°F to 190°F
Static Grounding:	Braided copper wire runs length of hose
Marking:	PETROLEUM TRANSFER/DISCHARGE - 200PSI WP

<b>Petroleum Hose Group</b> <b>Oil Discharge Hose - 200 PIS</b>			
Part Number	ID Size	OD Size	Weight lbs per foot
H-P-ODIS200-24-X	1 1/2"	2.00"	0.96
H-P-ODIS200-32-X	2"	2.50"	1.12
H-P-ODIS200-48-X	3"	3.50"	1.89
H-P-ODIS200-64-X	4"	4.53"	2.68
H-P-ODIS200-96-X	6"	6.84"	5.89
H-P-ODIS200-128-X	8"	9.13"	7.86

**For cut lengths add +15% to pricing**

For the "X" value in the part number: use "C" to specify full coil  
use "F" to specify length in feet

**Petroleum Hose Group**

**Blender-Fracturing Hose - 400 PSI**



A rugged hose designed for blender/fracturing operations in oilfield and gas exploration applications.

The abrasion resistant cover is constructed to withstand extended exposure to harsh abrasive conditions.

Designed for the transfer of 98% water and sand mixtures, oil slurries and crude oil.

Standard 100 and 200 foot coils. Also available By-the-foot or By-the-yard.

**Tech Data:**

Tube: Black, NBR compound, fuel and oil resistant  
 Cover: Black, SBR/Nitrile blen compound  
 Reinforcement: High tensile tire cord plies  
 Working Pressure: 400 PSI  
 Safety Factor: 4:1  
 Temperature: -30°F to 180°F  
 Marking: 400PSI WP BLENDER/FRACTURING DISCHARGE HOSE

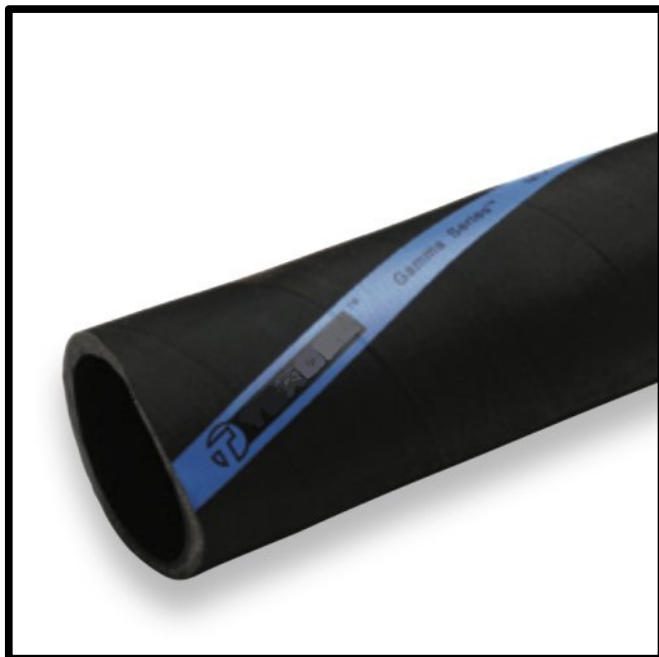
<b>Petroleum Hose Group</b> <b>Blender / Fracturing Hose - 400 PSI</b>			
Part Number	ID Size	OD Size	Weight lbs per foot
H-P-BLENDFRAC400-64-X	4"	4.77"	3.02

**For cut lengths add +15% to pricing**

For the "X" value in the part number: use "C" to specify full coil  
 use "F" to specify length in feet

## Petroleum Hose Group

### Multi-Purpose Discharge Hose - 500PSI



Heavy duty discharge hose can be used in a variety of applications in severe conditions such as oil waste, drilling muds, high pressure water or fracturing.

Standard lengths of 100 / 200 foot coils. Also available By-the-foot or By-the-yard lengths.

#### Tech Data:

Tube:	Black, NBR compound, fuel and oil resistant
Cover:	Black, NR/SBR blend compound; weather and abrasion resistant
Reinforcement:	High tensile tire cord plies; static wire
Working Pressure:	500 PSI
Safety Factor:	4:1
Temperature:	-30°F to 180°F
Marking:	MULTIPURPOSE OIL DISCHARGE HOSE 500PSI WP

<b>Petroleum Hose Group</b> <b>Multi-Purpose Discharge - 500PSI</b>			
Part Number	ID Size	OD Size	Weight lbs per foot
H-P-MPDH500-32-X	2"	2.56"	1.22
H-P-MPDH500-48-X	3"	3.67"	2.15
H-P-MPDH500-64-X	4"	4.78"	3.31
H-P-MPDH500-80-X	5"	5.81"	4.97

**For cut lengths add +15% to pricing**

For the "X" value in the part number: use "C" to specify full coil  
use "F" to specify length in feet

**Petroleum Hose Group**

**Red Flexible Tank Truck Hose - 150PSI**



This is the "standard" tank truck, in-plant and oilfield loading hose - strong and flexible.

Standard 100 / 200 foot coils. Also available By-the-foot or By-the-yard lengths.

**Tech Data:**

Tube: Black, Nitrile, 55% aromatics (ORS)  
 Cover: Red, Neoprene, smooth  
 Reinforcement: High tensile tire cord plies; helix wire  
 Working Pressure: 150 PSI  
 Safety Factor: 4:1  
 Temperature: -40°F to 180°F  
 Vacuum Rating: 30 in/HG  
 Ends: Soft cuffs on standard lengths  
 Marking: PETROLEUM TANK TRUCK HOSE 150PSI WP

<b>Petroleum Hose Group</b> <b>Red Flexible Tank Truck Hose - 150PSI</b>				
Part Number	ID Size	OD Size	Bend Radius	Weight lbs per foot
H-P-TANKTRK150-32-X	2"	2.45"	8"	1.10
H-P-TANKTRK150-48-X	3"	3.50"	13"	1.79
H-P-TANKTRK150-64-X	4"	4.56"	19"	2.64

**For cut lengths add +15% to pricing**

For the "X" value in the part number: use "C" to specify full coil  
 use "F" to specify length in feet

## Petroleum Hose Group

### Red High Flexibility Tank Truck Hose - 150PSI



This is a premium grade hose for tank truck, in-plant and oilfield loading hose - strong and flexible.

Exceptional flexibility.

Standard 100 / 200 foot coils. Also available By-the-foot or By-the-yard lengths.

#### Tech Data:

Tube: Black, Nitrile, 55% aromatics (ORS)  
 Cover: Red, Neoprene, convoluted high flexibility  
 Reinforcement: High tensile tire cord plies; helix wire  
 Working Pressure: 150 PSI Safety Factor: 4:1  
 Temperature: -40°F to 180°F Vacuum Rating: 30 in/HG  
 Ends: Soft cuffs on standard lengths  
 Marking: FLEXIBLE PETROLEUM TANK TRUCK HOSE 150PSI WP

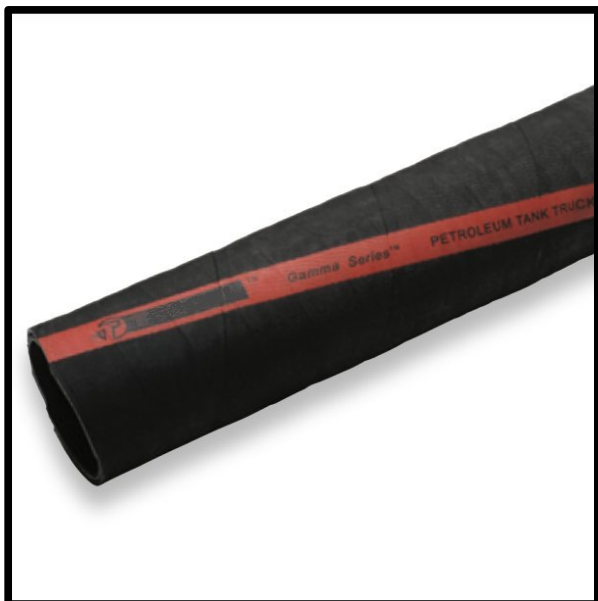
<b>Petroleum Hose Group</b> <b>Red Flexible Tank Truck Hose - 150PSI</b>				
Part Number	ID Size	OD Size	Bend Radius	Weight lbs per foot
H-P-TANKTRKHF150-24-X	1 1/2"	1.98"	1.5"	0.80
H-P-TANKTRKHF150-32-X	2"	2.47"	2"	1.05
H-P-TANKTRKHF150-48-X	3"	3.50"	3"	1.64
H-P-TANKTRKHF150-64-X	4"	4.56"	4"	2.58

**For cut lengths add +15% to pricing**

For the "X" value in the part number: use "C" to specify full coil  
 use "F" to specify length in feet

## Petroleum Hose Group

### Black Tank Truck Hose - 150 PSI



Standard hose for tank truck, in-plant and oilfield loading operations - strong and flexible hose.

100 / 200 foot coils and by-the-foot or by-the-metre lengths.

#### Tech Data:

Tube: Black, Nitrile, 55% aromatics (ORS)  
 Cover: Black, Neoprene, smooth  
 Reinforcement: High tensile tire cord plies; dual helix wire  
 Working Pressure: 150 PSI Safety Factor: 4:1  
 Temperature: -40°F to 180°F Vacuum Rating: 30 in/HG  
 Ends: Soft cuffs on standard lengths  
 Marking: PETROLEUM TANK TRUCK HOSE 150PSI WP

<b>Petroleum Hose Group</b> <b>Black Tank Truck Hose - 150 PSI</b>				
Part Number	ID Size	OD Size	Bend Radius	Weight lbs per foot
H-P-BTANK150-20-X	1 1/4"	1.67"	4"	0.70
H-P-BTANK150-24-X	1 1/2"	1.92"	6"	0.84
H-P-BTANK150-32-X	2"	2.45"	8"	1.10
H-P-BTANK150-32-X	2 1/2"	2.95"	10"	1.48
H-P-BTANK150-48-X	3"	3.50"	13"	1.79
H-P-BTANK150-64-X	4"	4.56"	19"	2.64

**For cut lengths add +15% to pricing**

For the "X" value in the part number: use "C" to specify full coil  
 use "F" to specify length in feet

## Petroleum Hose Group

### Black High Flexibility Tank Truck Hose - 150 PSI



Premium high flexibility hose for tank truck, in-plant and oilfield loading operations - strong and highly flexible hose.

Standard lengths of 100 / 200 foot coils. Also available By-the-foot or By-the-yard.

5", 6" and 8" ID hose lengths are 100 feet coils and by-the-foot or by-the-metre lengths.

#### Tech Data:

Tube: Black, Nitrile, 55% aromatics (ORS)  
Cover: Black, Neoprene, convoluted high flexibility  
Reinforcement: High tensile tire cord plies; helix wire  
Working Pressure: 150 PSI Safety Factor: 4:1  
Temperature: -40°F to 180°F Vacuum Rating: 30 in/HG  
Ends: Soft cuffs on standard lengths  
Marking: FLEXIBLE PETROLEUM TANK TRUCK HOSE 150PSI WP

<b>Petroleum Hose Group</b> <b>Black High Flexibility Tank Truck Hose - 150 PSI</b>				
Part Number	ID Size	OD Size	Bend Radius	Weight lbs per foot
H-P-BTANKHF150-24-X	1 1/2"	1.98"	1.5"	0.77
H-P-BTANKHF150-32-X	2"	2.47"	2"	1.02
H-P-BTANKHF150-40-X	2 1/2"	3.00"	2.5"	1.31
H-P-BTANKHF150-48-X	3"	3.50"	3"	1.60
H-P-BTANKHF150-64-X	4"	4.56"	4"	2.55
H-P-BTANKHF150-80-X	5"	5.72"	6"	3.86
H-P-BTANKHF150-96-X	6"	6.75"	8"	4.17
H-P-BTANKHF150-128-X	8"	8.81"	10"	6.02

**For cut lengths add +15% to pricing**

For the "X" value in the part number: use "C" to specify full coil  
use "F" to specify length in feet



## Petroleum Hose Group

### Black Heavy Duty Tank Truck / Offshore Hose - 300 PSI



Designed for offshore drilling and other demanding applications where a high working pressure is needed along with long lengths.

Standard lengths of 100 / 200 foot coils.

Also available By-the-foot or By-the-yard lengths.

#### Tech Data:

Tube: Black, Nitrile, 55% aromatics (ORS)  
 Cover: Black, Neoprene, smooth  
 Reinforcement: High tensile tire cord plies; helix wire  
 Working Pressure: 300 PSI Safety Factor: 4:1  
 Temperature: -40°F to 180°F Vacuum Rating: 29 in/HG  
 Ends: Soft cuffs on standard lengths  
 Marking: HEAVY DUTY TANK TRUCK HOSE 300PSI WP

<b>Petroleum Hose Group</b> <b>Black Heavy Duty Tank Truck / Offshore Hose - 300 PSI</b>				
Part Number	ID Size	OD Size	Bend Radius	Weight lbs per foot
H-P-HDTANK300-24-X	1 1/2"	1.95"	5"	0.85
H-P-HDTANK300-32-X	2"	2.48"	7.5"	1.16
H-P-HDTANK300-40-X	2 1/2"	3.00"	12"	1.56
H-P-HDTANK300-48-X	3"	3.59"	16"	2.26
H-P-HDTANK300-64-X	4"	4.70"	20"	3.32

**For cut lengths add +15% to pricing**

For the "X" value in the part number: use "C" to specify full coil  
use "F" to specify length in feet

**Petroleum Hose Group**

**Black Heavy Duty High Flex Tank Truck / Offshore Hose - 300 PSI**



Heavy Duty, High Pressure and High Flexibility for demanding applications.

Designed for offshore drilling and other demanding applications where a high working pressure is needed along with long lengths.

Standard lengths of 100 / 200 foot coils and also available By-the-foot or By-the-yard lengths.

**Tech Data:**

Tube: Black, Nitrile, 55% aromatics (ORS)  
 Cover: Black, Neoprene, convoluted high flexibility  
 Reinforcement: High tensile tire cord plies; helix wire  
 Working Pressure: 300 PSI Safety Factor: 4:1  
 Temperature: -40°F to 180°F Vacuum Rating: 29 in/HG  
 Ends: Soft cuffs on standard lengths  
 Marking: PETROLEUM TANK TRUCK HOSE 150PSI WP

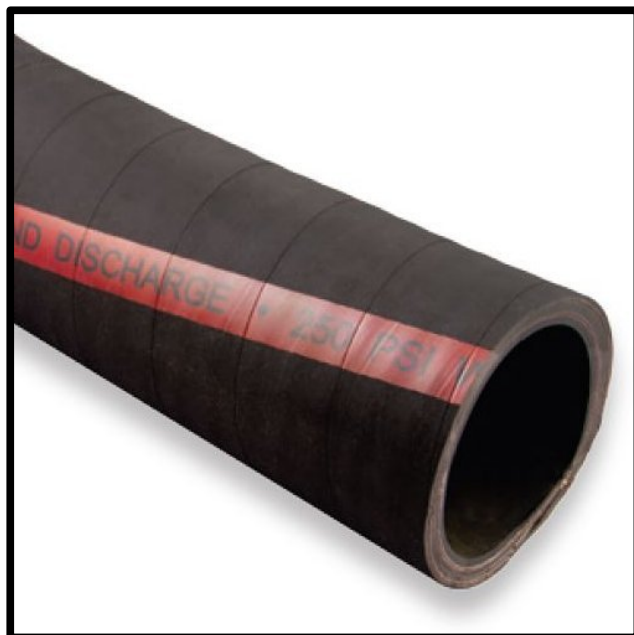
<b>Petroleum Hose Group</b> <b>Black Heavy Duty High Flexibility Tank Truck / Offshore Hose</b> <b>- 300 PSI</b>				
Part Number	ID Size	OD Size	Bend Radius	Weight lbs per foot
H-P-HDTANK300HF-32-X	2"	2.78"	4"	1.06
H-P-HDTANK300HF-48-X	3"	3.92"	7"	1.72
H-P-HDTANK300HF-64-X	4"	5.03"	10"	2.72
H-P-HDTANK300HF-64-X	6"	6.94"	20"	5.4

**For cut lengths add +15% to pricing**

For the "X" value in the part number: use "C" to specify full coil  
 use "F" to specify length in feet

## Petroleum Hose Group

### Oil Suction & Discharge Hose - 250 PSI



Heavy duty smooth bore dock hose.

Designed for offshore drilling and other demanding applications where a high working pressure is needed along with long lengths.

Standard lengths of 100 feet for sizes 2" through 8". Standard length is 40 feet for sizes 10" and 12".

Cut lengths available: By-the-foot / By-the-yard

Meets USCG 33CFR 154.500 when properly assembled.

#### Tech Data:

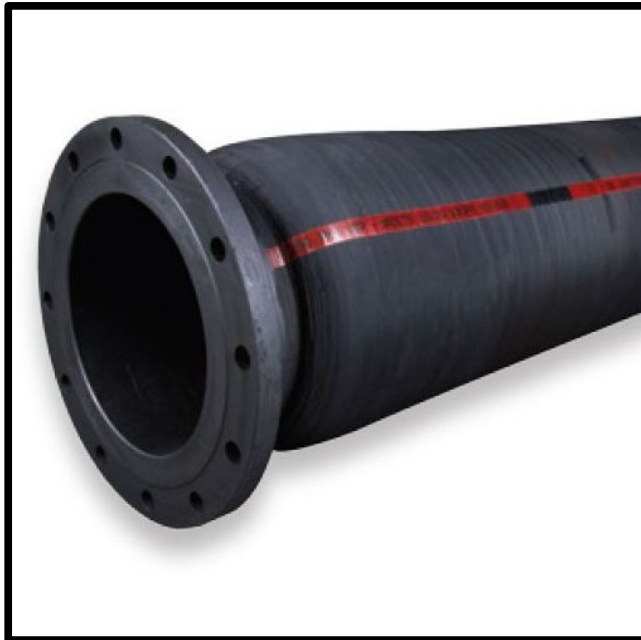
Tube:	Black, Nitrile, 55% aromatics (ORS)		
Cover:	Black, Neoprene		
Reinforcement:	High tensile tire cord plies; helix wire		
Working Pressure:	250 PSI	Safety Factor:	4:1
Temperature:	-40°F to 190°F	Vacuum Rating:	29 in/HG
Ends:	Soft cuffs on standard lengths		
Marking:	OIL SUCTION AND DISCHARGE HOSE - 250 PSI WP - MEETS USCG 33CFR 154.400		

<b>Petroleum Hose Group</b> <b>Oil Suction &amp; Discharge Hose - 250 PSI / 30inHG</b>				
Part Number	ID Size	OD Size	Bend Radius	Weight lbs per foot
H-P-OSD-250-32	2"	2.94"	8"	2.15
H-P-OSD-250-48	3"	4.25"	11"	3.41
H-P-OSD-250-64	4"	5.31"	15"	4.87
H-P-OSD-250-96	6"	7.38"	25"	8.18
H-P-OSD-250-128	8"	9.75"	31"	14.35
H-P-OSD-250-160	10"	12.00"	36"	20.49
H-P-OSD-250-192	12"	14.13"	40"	26.49

**For cut lengths add +15% to pricing**

**Petroleum Hose Group**

**Oil Suction & Discharge Hose Assembly with Flanges - 250 PSI**



Heavy duty smooth bore dock hose with built-in carbon steel 150# ANSI flanges.

Heavy Duty, High Pressure and High Flexibility for demanding applications.

Designed for offshore drilling and other demanding applications where a high working pressure is needed along with long lengths.

Meets USCG 33CFR 154.500

Available with 8 bolt flanges.

**Tech Data:**

Tube:	Black, Nitrile, 55% aromatics (ORS)		
Cover:	Black, Neoprene		
Reinforcement:	High tensile tire cord plies; helix wire		
Working Pressure:	250 PSI	Safety Factor:	4:1
Temperature:	-40°F to 190°F	Vacuum Rating:	30 in/HG
Ends:	ANSI 150# carbon steel built-in fixed x floating flanges		
Marking:	OIL SUCTION AND DISCHARGE - 250 PSI WP - MEETS USCG 33CFR 154.400		

**Oil Suction & Discharge Hose Assembly with Flanges - 250 PSI**

<b>Petroleum Hose Group</b>				
<b>Oil Suction &amp; Discharge Hose with Flanges - 250 PSI / 30inHG</b>				
<b>Part Number</b>	<b>Assembly</b>	<b>OD Size</b>	<b>Bend Radius</b>	<b>Weight in lbs</b>
H-P-OSDFL-4X20	4" x 20'	5 5/16"	20"	216
H-P-OSDFL-6X10	6" x 10'	7 3/8"	26"	227
H-P-OSDFL-6X20	6" x 20'	7 3/8"	26"	355
H-P-OSDFL-6X25	6" x 25'	7 3/8"	26"	419
H-P-OSDFL-6X30	6" x 30'	7 3/8"	26"	483
H-P-OSDFL-6X40	6" x 40'	7 3/8"	26"	613
H-P-OSDFL-6X50	6" x 50'	7 3/8"	26"	741
H-P-OSDFL-8X10	8" x 10'	9 3/4"	30"	346
H-P-OSDFL-8X20	8" x 20'	9 3/4"	30"	556
H-P-OSDFL-8X25	8" x 25'	9 3/4"	30"	628
H-P-OSDFL-8X30	8" x 30'	9 3/4"	30"	723
H-P-OSDFL-8X50	8" x 50'	9 3/4"	30"	1098
H-P-OSDFL-10X10	10" x 10'	12"	60"	507
H-P-OSDFL-10X20	10" x 20'	12"	60"	778
H-P-OSDFL-10X25	10" x 25'	12"	60"	915
H-P-OSDFL-12X10	12" x 10'	12"	100"	664
H-P-OSDFL-12X20	12" x 20'	12"	100"	1001
H-P-OSDFL-12X25	12" x 25'	12"	100"	1171
H-P-OSDFL-14X10	14" x 10'	12"	100"	948
H-P-OSDFL-14X20	14" x 20'	12"	100"	1378

## Petroleum Hose Group

### NBR Suction Hose - up to 50PSI



Heavy duty all weather suction hose for general oilfield, water, wastewater, septic and manure.

Service life varies with media being conveyed.

PVC helix prolongs hose life over rough surfaces.

High flexibility. Lightweight. Floats

#### Tech Data:

Construction: NBR/PVC tube with a PVC helix  
Safety Factor: 3:1  
Temperature: -40°F to 140°F  
Vacuum Rating: 29.8 in/HG

<b>Petroleum Hose Group</b> <b>NBR Suction Hose - Up to 50PSI / 29.8 inHG Vacuum</b>				
Part Number	ID Size	OD Size	Bend Radius	Weight lbs per foot
H-P-NBR-24	1 1/2"	1.82"	3"	0.44
H-P-NBR-32	2"	2.43"	5"	0.74
H-P-NBR-48	3"	3.55"	7"	1.21
H-P-NBR-64	4"	4.62"	11"	1.95
H-P-NBR-96	6"	6.81"	20"	3.23

Working Pressure: -24 size: 50PSI, -32 size: 50PSI, -48 size: 43PSI, -64 size: 38PSI, -96 size: 23PSI

## Petroleum Hose Group

### Tank Drop Hose - 65PSI



High quality tank drop hose compatible with gasoline, diesel, biofuels (up to E-98) and biodiesel (B-100 meeting ASTM D-6751).

Extremely flexible even at sub-zero temperatures.

Use appropriate banding sleeves or banding coils for assembly accuracy.

Standard Lengths of 20, 60 and 100 feet.

Fabrications to be performed only by experienced personnel. Static wire must be properly embedded, grounded and tested prior to use to assure proper grounding of the hose and assembly.

#### Tech Data:

Tube and Cover:	Clear, specially compounded polyurethane
Reinforcement:	Rigid PVC helix (green) with synthetic yarn braiding
Temperature:	-40°F to 150°F
Grounding:	Embedded anodized copper wire
Marking:	TDG - <ID> - LOT
Working Pressure:	65 PSI
Vacuum Rating:	29.8 in/HG

<b>Petroleum Hose Group</b> <b>Tank Drop Hose - 65 PSI / 29.8 inHG</b>				
Part Number	ID Size	OD Size	Bend Radius	Weight lbs per foot
H-P-TDH-48	3"	3 3/4"	6"	1.21
H-P-TDH-64	4"	4 4/5"	8"	1.72



## Petroleum Hose Group

### Heavy Duty Tank Drop Hose - 65PSI



High quality tank drop hose for gasoline.

Lightweight and flexible.

Flexible even at sub-zero temperatures.

Use appropriate banding sleeves or banding coils for assembly accuracy.

Standard Lengths of 20, 60 and 100 feet.

Fabrications to be performed only by experienced personnel. Static wire must be properly embedded, grounded and tested prior to use to assure proper grounding of the hose and assembly.

#### Tech Data:

Tube and Cover:	Black, specially compounded NBR/PVC (good for up to 40% aromatics).
Reinforcement:	Rigid PVC helix (orange) with synthetic yarn braiding
Temperature:	-40°F to 150°F
Grounding:	Embedded anodized copper wire
Marking:	TDHD - <ID> - LOT
Working Pressure:	65 PSI
Vacuum Rating:	29.8 in/HG

<b>Petroleum Hose Group</b> <b>Heavy Duty Tank Drop Hose - 65 PSI / 29.8 inHG</b>				
Part Number	ID Size	OD Size	Bend Radius	Weight lbs per foot
H-P-TDHHD-32	2"	2.63"	5"	1.12
H-P-TDHHD-48	3"	3.81"	6"	1.38
H-P-TDHHD-64	4"	4.72"	8"	2.19



## Petroleum Hose Group

### Heavy Duty Tank Drop Hose - 150 PSI



High quality tank drop hose for gasoline.

Lightweight and flexible.

Flexible even at sub-zero temperatures.

Use appropriate banding sleeves or banding coils for assembly accuracy.

Standard Lengths of 20, 60 and 100 feet.

Fabrications to be performed only by experienced personnel. Static wire must be properly embedded, grounded and tested prior to use to assure proper grounding of the hose and assembly.

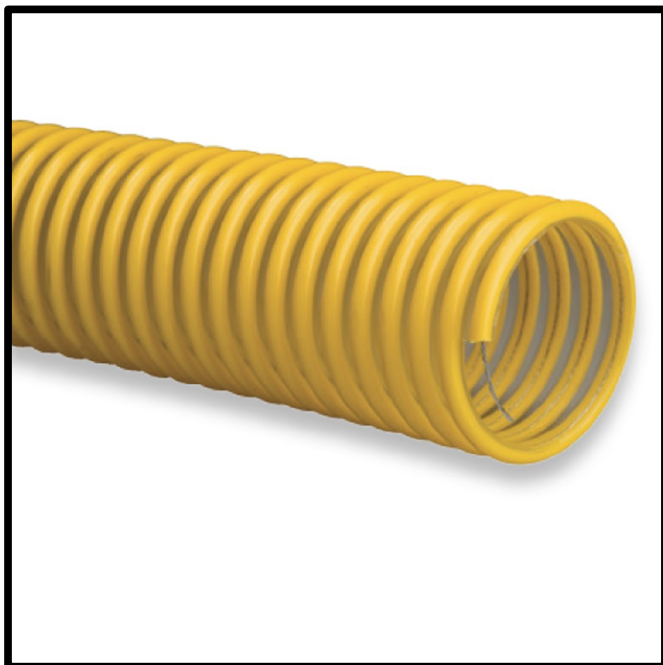
#### Tech Data:

Tube and Cover:	Black, specially compounded NBR/PVC (good for up to 40% aromatics).
Reinforcement:	Rigid PVC helix (red) with synthetic yarn braiding
Temperature:	-40°F to 150°F
Grounding:	Embedded anodized copper wire
Marking:	HEAVY DUTY TANK DROP HOSE 150 PSI W.P. - <ID> - LOT
Working Pressure:	65 PSI
Vacuum Rating:	29 in/HG

<b>Petroleum Hose Group</b> <b>Heavy Duty Tank Drop Hose - 65 PSI / 29.8 inHG</b>				
Part Number	ID Size	OD Size	Bend Radius	Weight lbs per foot
H-P-TDHHD-150-32	2"	2.73"	6"	1.26
H-P-TDHHD-150-48	3"	3.75"	7"	1.55
H-P-TDHHD-150-64	4"	4.88"	9"	2.49

## Petroleum Hose Group

### Vapor Recovery Hose - Medium Duty



High quality vapor recovery hose for medium duty applications.

Specially compounded, non-permeable polyurethane designed for compatability with gasoline, diesel and most biofuels, such as ethanol (up to E98) and biodiesel vapors (B100 meeting ASTM D 6751).

Lightweight and flexible even at sub-zero temperatures.

Use appropriate banding sleeves or banding coils for assembly accuracy.

Standard Lengths of 20, 60 and 100 feet.

Fabrications to be performed only by experienced personnel. Static wire must be properly embedded, grounded and tested prior to use to assure proper grounding of the hose and assembly.

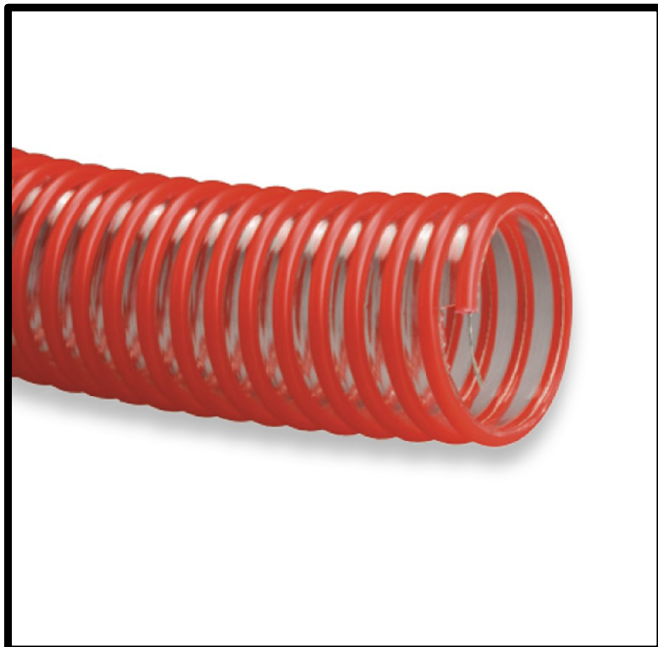
#### Tech Data:

Tube and Cover:	Clear, specially compounded polyurethane.
Reinforcement:	Rigid PVC helix (yellow)
Temperature:	-40°F to 150°F
Grounding:	Embedded anodized copper wire
Marking:	VRM - <ID> - LOT
Working Pressure:	-32 size: 17 PSI, -48 size: 11 PSI, -64 size: 9 PSI
Vacuum Rating:	29 in/HG

<b>Petroleum Hose Group</b> <b>Vapor Recovery Hose - Medium Duty</b>				
Part Number	ID Size	OD Size	Bend Radius	Weight lbs per foot
H-P-VRMD-32	2"	3.0"	3"	0.52
H-P-VRMD-48	3"	3.5"	3.5"	0.77
H-P-VRMD-64	4"	4.5"	4.5"	1.11

## Petroleum Hose Group

### Vapor Recovery Hose - Heavy Duty



High quality vapor recovery hose for heavy duty applications.

Specially compounded, non-permeable polyurethane designed for compatability with gasoline, diesel and most biofuels, such as ethanol (up to E98) and biodiesel vapors (B100 meeting ASTM D 6751).

Lightweight and flexible even at sub-zero temperatures.

Use appropriate banding sleeves or banding coils for assembly accuracy.

Standard Lengths of 20, 60 and 100 feet.

Fabrications to be performed only by experienced personnel. Static wire must be properly embedded, grounded and tested prior to use to assure proper grounding of the hose and assembly.

#### Tech Data:

Tube and Cover:	Clear, specially compounded polyurethane.
Reinforcement:	Rigid PVC helix (red)
Temperature:	-40°F to 150°F
Grounding:	Embedded anodized copper wire
Marking:	VRM - <ID> - LOT
Working Pressure:	-48 size: 13 PSI, -64 size: 11 PSI
Vacuum Rating:	29 in/HG

<b>Petroleum Hose Group</b> <b>Vapor Recovery Hose - Heavy Duty</b>				
Part Number	ID Size	OD Size	Bend Radius	Weight lbs per foot
H-P-VRHD-48	3"	3.58"	4.5"	0.77
H-P-VRHD-64	4"	4.59"	5.5"	1.11

## Petroleum Hose Group Banding Sleeves



For use with tank drop hoses and vapor recovery hoses.

A 12" length is used per hose end to prevent band clamps from slipping into the corrugation and damaging the hose.

Fabrications to be performed only by experienced personnel. Static wire must be properly embedded, grounded and tested prior to use to assure proper grounding of the hose and assembly.

Standard length is 3 feet.

### Tech Data:

Tube and Cover: Non-food grade PVC  
Temperature: -40°F to 150°F

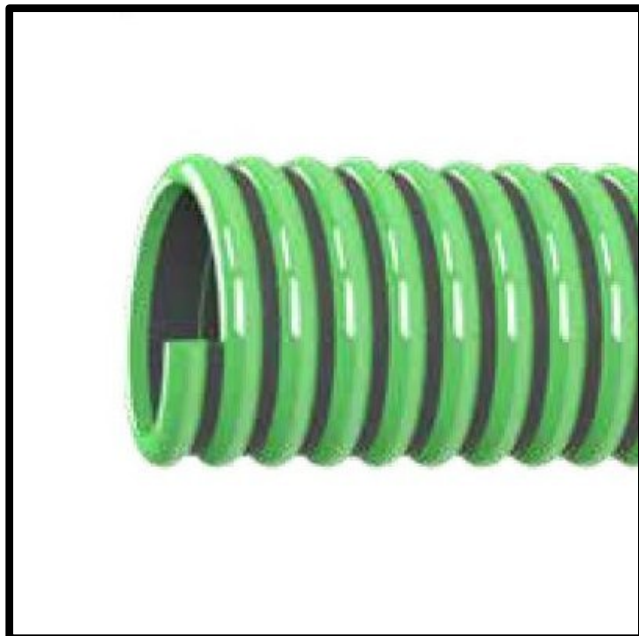
Petroleum Hose Group Banding Sleeves		
Part Number	ID Size	Weight lbs per foot
Green Banding Sleeve for Tank Drop Hose		
H-P-BSTD-48	3"	3.20
H-P-BSTD-64	4"	3.75
Orange Banding Sleeve for Heavy Duty Tank Drop Hose		
H-P-BSHDTD-32	2"	1.10
H-P-BSHDTD-48	3"	3.20
H-P-BSHDTD-64	4"	3.75
Red Banding Sleeve for 150PSI Tank Drop Hose		
H-P-BSTD150-32	2"	1.10
H-P-BSTD150-48	3"	3.20
H-P-BSTD150-64	4"	3.75
Yellow Banding Sleeve for Vapor Recovery Hose		
H-P-BSVR-32	2"	1.10
H-P-BSVR-48	3"	3.20
H-P-BSVR-64	4"	3.75

## Hoses for Water Based Fluid Applications

NBR Suction Hose Up to 50 PSI .....	30
Heavy Duty PVC Water Suction Hose - Up to 85 PSI .....	31
Heavy Duty Clear PVC Water Suction Hose - Up to 100 PSI .....	32
Blue PVC Lay Flat Discharge Hose - Up to 90 PSI .....	33
Red PVC Lay Flat Discharge Hose - Up to 150 PSI .....	34
EPDM Mill Discharge Hose - Up to 150 PSI .....	35
Heavy Duty PVC Water Suction Hose - Up to 100 PSI .....	36
Double Bolt Spiral Clamps .....	37
Heavy Duty Water Suction & Discharge Hose - Up to 150 PSI .....	38
Heavy Duty Water Suction & Discharge Hose, High Flexibility - Up to 150 PSI .....	39
Medium Duty Soft Wall 2-ply Discharge Hose, 150 PSI .....	40
Heavy Duty Soft Wall 4-ply Discharge Hose, 250 PSI .....	41

## Water Hose Group

### NBR Suction Hose - up to 50PSI



Heavy duty all weather suction hose for general water, wastewater, septic and manure applications.

Service life varies with media being conveyed.

PVC helix prolongs hose life over rough surfaces.

High flexibility. Lightweight. Floats

#### Tech Data:

Construction: NBR/PVC tube with a PVC helix  
Safety Factor: 3:1  
Temperature: -40°F to 140°F  
Vacuum Rating: 29.8 in/HG

<b>Petroleum Hose Group</b> <b>NBR Suction Hose - Up to 50PSI / 29.8 inHG Vacuum</b>				
Part Number	ID Size	OD Size	Bend Radius	Weight
H-W-NBR-24	1 1/2"	1.82"	3"	0.44 lbs / ft
H-W-NBR-32	2"	2.43"	5"	0.74 lbs / ft
H-W-NBR-48	3"	3.55"	7"	1.21 lbs / ft
H-W-NBR-64	4"	4.62"	11"	1.95 lbs / ft
H-W-NBR-96	6"	6.81"	20"	3.23 lbs / ft

Working Pressure: -24 size: 50PSI, -32 size: 50PSI, -48 size: 43PSI, -64 size: 38PSI,  
-96 size: 23PSI



## Water Hose Group

### Heavy Duty PVC Water Suction Hose - up to 85 PSI



A premium heavy-duty for great durability.

Smooth bore allows full flow.

On sizes of 4" ID and above, the outer cover is slightly convoluted for improved flexibility.

#### Tech Data:

Construction: Olive green PVC with a green PVC helix  
 Safety Factor: 3:1  
 Temperature: -4°F to 150°F  
 Vacuum Rating: 29 in/HG  
 Marking: HEAVY DUTY WATER SUCTION HOSE - <ID> - LOT

<b>Water Hose Group</b> <b>Heavy Duty PVC Water Suction Hose</b>					
Part Number	ID Size	OD Size	Working Pressure	Bend Radius	Weight/ft - lbs
H-W-HDPVC-24	1 1/2"	1.77"	85	4"	0.39
H-W-HDPVC-32	2"	2.24"	70	5"	0.57
H-W-HDPVC-40	2 1/2"	2.80"	70	6.5"	0.74
H-W-HDPVC-48	3"	3.27"	65	8.5"	0.94
H-W-HDPVC-56	4"	4.67"	65	12"	1.48
H-W-HDPVC-80	5"	5.51"	50	14"	2.15
H-W-HDPVC-96	6"	6.93"	50	15"	2.89
H-W-HDPVC-128	8"	8.66"	45	20"	4.37
H-W-HDPVC-160	10"	11.34"	30	35"	7.45
H-W-HDPVC-192	12"	13.39"	30	40"	8.87

Sizes 1 1/2 through 5" are sold in 100 foot lengths. 6" available in 20 and 100 foot lengths. 8" available in 20 foot lengths. 10 and 12" available in 20 and 25 foot lengths.

## Water Hose Group

### Heavy Duty Clear PVC Water Suction Hose - Up to 100 PSI



A premium heavy-duty hose with great durability.

Smooth bore allows full flow.

Clear PVC allows visual confirmation of water flow.

On sizes of 4" ID and above, the outer cover is slightly convoluted for improved flexibility.

#### Tech Data:

Construction: Clear PVC with a white PVC helix  
 Safety Factor: 3:1  
 Temperature: -4°F to 150°F  
 Vacuum Rating: 29 in/HG  
 Marking: HEAVY DUTY WATER SUCTION HOSE - <ID> - LOT

<b>Water Hose Group</b> <b>Heavy Duty PVC Water Suction Hose</b>					
Part Number	ID Size	OD Size	Working Pressure	Bend Radius	Weight/ft - lbs
H-W-HDCLPVC-12	3/4"	0.95"	100	2"	0.20
H-W-HDCLPVC-16	1"	1.26"	100	2.5"	0.27
H-W-HDCLPVC-24	1 1/2"	1.82"	85	4"	0.39
H-W-HDCLPVC-32	2"	2.39"	70	5"	0.57
H-W-HDCLPVC-40	2 1/2"	2.93"	70	6.5"	0.74
H-W-HDCLPVC-48	3"	3.43"	65	8.5"	0.94
H-W-HDCLPVC-64	4"	4.53"	65	12"	1.48
H-W-HDCLPVC-80	5"	5.55"	50	14"	2.15
H-W-HDCLPVC-96	6"	6.67"	50	15"	2.89
H-W-HDCLPVC-128	8"	8.83"	45	20"	4.37

Sizes 3/4" through 5" are sold in 100 foot lengths. 6" available in 20 and 100 foot lengths. 8" available in 20 foot lengths.



## Water Hose Group

### Blue PVC Lay-Flat Discharge Hose - Up to 90 PSI



A premium lightweight, lay-flat PVC hose that is economical and easy to handle.

Excellent for pump discharge applications.

Polyester reinforcement.

Standard lengths of 300 feet. Sizes 10" and 12" are 100 foot lengths.

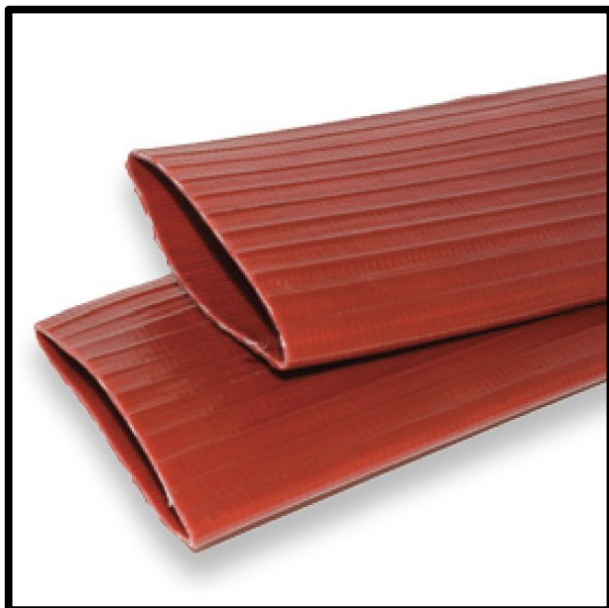
#### Tech Data:

Construction: Blue PVC with high tensile polyester reinforcement yarns  
 Safety Factor: 3:1  
 Temperature: -10°F to 120°F  
 Marking: WATER DISCHARGE HOSE - <ID> - LOT

<b>Water Hose Group</b> <b>PVC Lay-Flat Water Discharge Hose</b>			
Part Number	ID Size	Working Pressure	Weight/ft - lbs
H-W-DISPVC-16	1"	90	0.10
H-W-DISPVC-20	1 1/4"	85	0.12
H-W-DISPVC-24	1 1/2"	70	0.14
H-W-DISPVC-32	2"	65	0.18
H-W-DISPVC-40	2 1/2"	60	0.26
H-W-DISPVC-48	3"	55	0.31
H-W-DISPVC-64	4"	55	0.36
H-W-DISPVC-80	5"	45	0.64
H-W-DISPVC-96	6"	45	0.73
H-W-DISPVC-128	8"	45	1.21
H-W-DISPVC-160	10"	35	1.81
H-W-DISPVC-192	12"	30	1.95

## Water Hose Group

### Red PVC Lay-Flat Discharge Hose - Up to 150 PSI



A heavy duty, lay-flat PVC hose designed for higher pressure applications.

Excellent for pump discharge applications.

Polyester reinforcement.

Standard lengths of 300 feet.

#### Tech Data:

Construction: Red PVC with high tensile polyester reinforcement yarns  
 Safety Factor: 3:1  
 Temperature: -10°F to 120°F  
 Marking: HEAVY DUTY WATER DISCHARGE HOSE - <ID> - LOT

<b>Water Hose Group</b> <b>PVC Lay-Flat Water Discharge Hose</b>			
Part Number	ID Size	Working Pressure	Weight/ft - lbs
H-W-DISPVCHD-24	1 1/2"	150	0.20
H-W-DISPVCHD-32	2"	150	0.28
H-W-DISPVCHD-48	3"	150	0.57
H-W-DISPVCHD-64	4"	130	0.67
H-W-DISPVCHD-96	6"	120	1.34
H-W-DISPVCHD-128	8"	90	1.88

## Water Hose Group

### EPDM Mill Discharge Hose - Up to 150 PSI



Lightweight general purpose designed for open-ended discharge. 300 PSI acceptance - 150 PSI working pressure.

Standard lengths of 100 feet for sizes 1 1/2' through 2 1/2" ID. 50 foot lengths for 3" and 4" sizes.

Working Pressure 150 PSI.

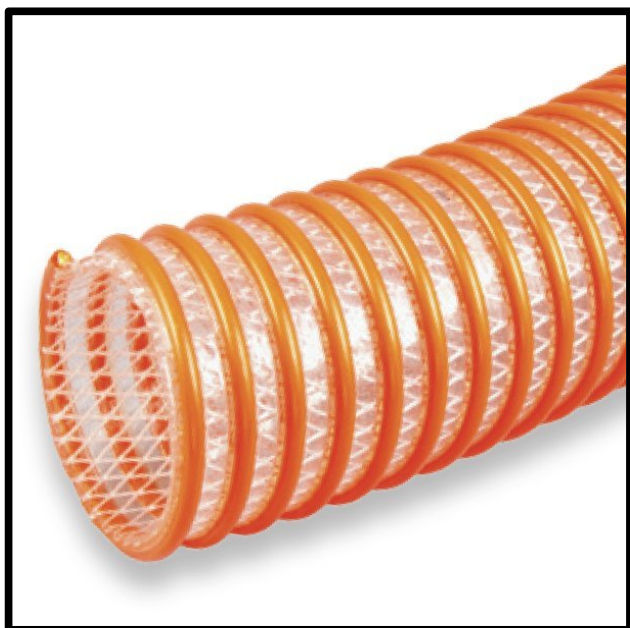
#### Tech Data:

Tube and Cover: EPDM Synthetic Rubber with white 100% polyester jacket  
 Temperature: -58°F to 176°F  
 Marking: MILL DISCHARGE HOSE - <ID> - 150 PSI SERVICE PRESSURE

Water Hose Group MILL Discharge Hose			
Part Number	ID Size	Bowl Size	Weight/ft - lbs
H-W-MILLDIS-24	1 1/2"	1 3/4"	0.20
H-W-MILLDIS-32	2"	2 3/16"	0.27
H-W-MILLDIS-40	2 1/2"	2 13/16"	0.38
H-W-MILLDIS-48	3"	Use Camlocks	0.46
H-W-MILLDIS-64	4"	Use Camlocks	0.65

## Water Hose Group

### Heavy Duty PVC Water Suction Hose - up to 100 PSI



A premium heavy-duty hose with great durability.

Smooth bore allows full flow.

Clear PVC allows visual confirmation of flow.

100' standard lengths for 1 1/2" through 5" ID.

20', 60', 100' lengths for 6" size.

15', 20', 25', 50' lengths for 8" size.

20', 25' lengths for 10" size.

20' lengths for 12" size.

Cut lengths available: by-the-foot / by-the-yard

#### Tech Data:

Construction: Clear flexible PVC with synthetic yarn and orange PVC right-handed helix  
 Safety Factor: 3:1  
 Temperature: -4°F to 150°F  
 Vacuum Rating: 28 in/HG  
 Marking: WATER SUCTION HOSE - <ID> - XXXPSI WP-LOT

Water Hose Group					
Heavy Duty PVC Water Suction Hose					
Part Number	ID Size	OD Size	Working Pressure	Bend Radius	Weight/ft - lbs
H-W-HDPVCSU-24	1 1/2"	2.03"	100	3"	0.47
H-W-HDPVCSU-32	2"	2.62"	100	4"	0.71
H-W-HDPVCSU-48	3"	3.71"	100	6"	1.14
H-W-HDPVCSU-64	4"	4.80"	75	7"	1.75
H-W-HDPVCSU-80	5"	6.05"	70	9"	3.00
H-W-HDPVCSU-96	6"	7.17"	70	10"	3.90
H-W-HDPVCSU-128	8"	9.33"	70	16"	5.56
H-W-HDPVCSU-160	10"	10.86"	40	25"	8.68
H-W-HDPVCSU-192	12"	13.8"	28	45"	10.30

## Water Hose Group

### Double Bolt Spiral Clamp



Double bolt spiral clamps are recommended for use with PVC hoses with convoluted outer cover.

Water Hose Group		
Double Bolt Spiral Clamps - Right-hand and Left-hand		
Part Number	Hose Diameter	Weight/ft - lbs
CLAMP-SP-24-X	1 1/2"	0.29
CLAMP-SP-32-X	2"	0.34
CLAMP-SP-40-X	2 1/2"	0.63
CLAMP-SP-48-X	3"	0.72
CLAMP-SP-64-X	4"	1.21
CLAMP-SP-80-X	5"	1.41
CLAMP-SP-96-X	6"	2.29
CLAMP-SP-128-X	8"	2.97

For the "X" value, specify "LH" for Left Hand or "RH" for right-hand

## Water Hose Group

### Heavy Duty Water Suction & Discharge Hose - up to 150 PSI



A premium heavy-duty hose with great flexibility and durability.

Lighter weight for easy handling.

100' standard lengths for 1", 1 1/4", 1 1/2" and 2 1/2" sizes.

200' lengths available for 2", 3", 4" sizes.

6" and 8" available in 20' and 100' lengths.

Cut lengths available: by-the-foot / by-the-yard

#### Tech Data:

Tube:	Black, SBR/EPDM blend
Cover:	Black, SBR/EPDM blend with green stripe
Safety Factor:	3:1
Temperature:	-40°F to 180°F
Ends:	Soft cuffs available on 6" and 8" sizes only
Vacuum Rating:	28 in/HG
Marking:	HEAVY DUTY WATER SUCTION & DISCHARGE HOSE - XXX PSI WP

<b>Water Hose Group</b> <b>Heavy Duty Water Suction &amp; Discharge Hose - 150 PSI</b>				
Part Number	ID Size	OD Size	Bend Radius	Weight lb/ft
H-W-HDSUDIS150-16	1"	1 19/64"	4"	0.50
H-W-HDSUDIS150-20	1 1/4"	1 5/8"	5"	0.62
H-W-HDSUDIS150-24	1 1/2"	1 7/8"	7"	0.85
H-W-HDSUDIS150-32	2"	2 7/16"	10"	1.06
H-W-HDSUDIS150-40	2 1/2"	2 7/8"	11"	1.31
H-W-HDSUDIS150-48	3"	3 29/64"	12"	1.73
H-W-HDSUDIS150-64	4"	4 1/2"	14"	2.55
H-W-HDSUDIS150-96	6"	6 5/8"	19"	5.90
H-W-HDSUDIS150-128	8"	8 5/8"	20"	7.90

**For cut lengths add +15% to pricing**

## Water Hose Group

### Heavy Duty Water Suction & Discharge Hose - up to 150 PSI High-Flexibility Version



A premium heavy-duty hose with great flexibility and durability.

Lighter weight for easy handling.

100' standard length for 5" size.

20' and 100' standard lengths for 6" and 8" sizes

20' and 25' standard lengths for 10" and 12" sizes

Convuluted outer cover enhances flexibility.

Cut lengths available: by-the-foot / by-the-yard

#### Tech Data:

Tube:	Black, SBR/EPDM blend
Cover:	Black, SBR/EPDM blend with green stripe
Safety Factor:	3:1
Temperature:	-40°F to 180°F
Ends:	Soft cuffs available on 6" and 8" sizes only
Vacuum Rating:	25 in/HG for 5", 6", & 8" size. 20 in/HG for 10" and 12" sizes
Marking:	HEAVY DUTY WATER SUCTION & DISCHARGE HOSE - XXX PSI WP

<b>Water Hose Group</b> <b>Heavy Duty Water Suction &amp; Discharge Hose - 150 PSI</b> <b>High Flexibility Convuluted Cover</b>				
Part Number	ID Size	OD Size	Bend Radius	Weight lb/ft
H-W-HDSUDIS150C-80	5"	5 41/64"	14"	4.50
H-W-HDSUDIS150C-96	6"	6 11/16"	15"	5.50
H-W-HDSUDIS150C-128	8"	8 3/4"	16"	7.50
H-W-HDSUDIS150C-160	10"	10 3/4"	18"	10.00
H-W-HDSUDIS150C-192	12"	12 7/8"	20"	12.00

**For cut lengths add +15% to pricing**



## Water Hose Group

### Medium Duty Soft Wall 2-ply Discharge Hose - up to 150 PSI



Similar to a lay-flat hose but with improved abrasion resistance and tensile strength.

Standard length is 100 feet.

Cut lengths available: by-the-foot / by-the-yard

#### Tech Data:

Tube:	Black, SBR / EPDM blend
Cover:	Black, SBR / EPDM blend
Reinforcement:	High tensile tire cord plies
Safety Factor:	3:1
Temperature:	-40°F to 180°F
Marking:	WATER DISCHARGE HOSE 2PLY XXX PSI WP

Water Hose Group				
Medium Duty Soft Wall 2-ply Discharge Hose - Up to 150 PSI				
Part Number	ID Size	OD Size	Working Pressure	Weight lb/ft
H-W-MDSW2PLY-24	1 1/2"	1 52/64"	150	0.41
H-W-MDSW2PLY-32	2"	2 20/64"	150	0.52
H-W-MDSW2PLY-40	2 1/2"	2 52/64"	150	0.65
H-W-MDSW2PLY-48	3"	3 20/64"	150	0.77
H-W-MDSW2PLY-64	4"	4 20/64"	150	1.06
H-W-MDSW2PLY-96	6"	6 22/64"	100	5.50
H-W-MDSW2PLY-128	8"	8 23/64"	100	7.50
H-W-MDSW2PLY-160	10"	10 27/64"	80	10.00

**For cut lengths add +15% to pricing**



## Water Hose Group

### Heavy Duty Soft Wall 4-ply Discharge Hose - up to 250 PSI



Similar to a lay-flat hose but with improved abrasion resistance and tensile strength.

Standard length is 100 feet.

Cut lengths available: by-the-foot / by-the-yard

#### Tech Data:

Tube: Black, SBR / EPDM blend  
Cover: Black, SBR / EPDM blend  
Reinforcement: High tensile tire cord plies  
Safety Factor: 3:1  
Temperature: -40°F to 180°F  
Marking: WATER DISCHARGE HOSE 2PLY XXX PSI WP

<b>Water Hose Group</b> <b>Heavy Duty Soft Wall 4-ply Discharge Hose - Up to 250 PSI</b>				
Part Number	ID Size	OD Size	Working Pressure	Weight lb/ft
H-W-HDSW4PLY-24	1 1/2"	1 58/64"	250	0.56
H-W-HDSW4PLY-32	2"	2 26/64"	250	0.73
H-W-HDSW4PLY-40	2 1/2"	2 58/64"	250	0.88
H-W-HDSW4PLY-48	3"	3 26/64"	250	1.04
H-W-HDSW4PLY-64	4"	4 27/64"	200	1.41
H-W-HDSW4PLY-72	4 1/2"	4 59/64"	200	1.58
H-W-HDSW4PLY-80	5"	5 28/64"	200	1.89
H-W-HDSW4PLY-96	6"	6 22/64"	100	2.48
H-W-HDSW4PLY-128	8"	8 23/64"	100	3.39
H-W-HDSW4PLY-160	10"	10 27/64"	150	4.44
H-W-HDSW4PLY-192	12"	12 34/64"	150	5.30

**For cut lengths add +15% to pricing**

## **Hoses for Chemical Fluid Applications**

Cross-Lined Polyethylene - 200 .....	43
Ultra-High Molecular Weight Polyethylene - 200 PSI .....	44

## Chemical Hose Group

### Cross Linked Polyethylene Suction & Discharge Hose - 200 PSI High-Flexibility Version



Designed to handle a wide range of chemicals, solvents and corrosive liquids in both pressure and suction applications.

Consult our chemical resistance chart for each application. It is advisable to test the tube material prior to initial use.

Convoluted outer cover enhances flexibility.

Standard lengths of 100' and 200'.

Cut lengths available: by-the-foot / by-the-yard

#### Tech Data:

Tube:	Clear, cross-linked polyethylene
Cover:	Green, EPDM (convoluted)
Safety Factor:	4:1
Temperature:	-40°F to 212°F
Ends:	Soft cuffs available on standard lengths
Vacuum Rating:	30 in/HG
Marking:	ACID-CHEMICAL SUCTION AND DISCHARGE HOSE 200 PSI WP XLPE TUBE
Temperature Rating:	Depends on specific chemical conveyed and concentration

Cross Linked Polyethylene - Suction & Discharge - 200 PSI High Flexibility Convoluted Cover				
Part Number	ID Size	OD Size	Bend Radius	Weight lb/ft
H-C-XLPE-16	1"	1 15/32"	2.5"	0.56
H-C-XLPE-24	1.5"	1 31/32"	3"	0.80
H-C-XLPE-32	2"	2 1/2"	4"	1.15
H-C-XLPE-40	2 1/2"	3"	5"	1.41
H-C-XLPE-48	3"	3 35/64"	6"	1.89
H-C-XLPE-64	4"	4 39/64"	8"	2.69

**For cut lengths add +15% to pricing**

## Chemical Hose Group

### Ultra High Molecular Weight Polyethylene Suction & Discharge Hose - 200 PSI - High-Flexibility Version



Designed to handle 98% of all chemicals, solvents and corrosive liquids in both pressure and suction applications.

Consult our chemical resistance chart for each application. It is advisable to test the tube material prior to initial use.

Convuluted outer cover enhances flexibility.

Standard lengths of 100' and 200' except 6" size which has 20', 25' and 100' standard lengths.

Cut lengths available: by-the-foot / by-the-yard

#### Tech Data:

Tube:	Clear, ultra high molecular weight polyethylene.
Cover:	Blue or Green, EPDM (convuluted).
Safety Factor:	4:1
Temperature:	-40°F to 230°F (250°F intermittent).
Ends:	Soft cuffs available on standard lengths.
Vacuum Rating:	30 in/HG
Marking:	ACID-CHEMICAL SUCTION AND DISCHARGE HOSE 200 PSI WP UHMW TUBE
Temperature Rating:	Depends on specific chemical conveyed and concentration.

Ultra High Molecular Weight Polyethylene - Suction & Discharge - 200 PSI High Flexibility Convuluted Cover				
Part Number	ID Size	OD Size	Bend Radius	Weight lb/ft
H-C-UHMWPE-16-X	1"	1 15/32"	2.5"	0.57
H-C-UHMWPE-20-X	1.25"	1 45/64"	2.75"	0.62
H-C-UHMWPE-24-X	1.5"	1 61/64"	3"	0.81
H-C-UHMWPE-32-X	2"	2 31/64"	4"	1.11
H-C-UHMWPE-40-X	2 1/2"	2 63/64"	5"	1.40
H-C-UHMWPE-48-X	3"	3 35/64"	6"	1.77
H-C-UHMWPE-64-X	4"	4 9/16"	8"	2.83
H-C-UHMWPE-96-X	6"	6 53/64"	20"	5.50

For the "X" value in the part number: substitute "B" for Blue and "G" for green color

For cut lengths add +15% to pricing

### Hoses for General Service & Air Applications

General Service and Air Push-On Hose - 300 PSI .....	46
Multi Purpose Air and Fluid Hose - 300 PSI .....	47
General Service Air & Fluid Hose - 250 PSI .....	48
General Service Hose Assembly with Fittings - 50 Feet - 250 PSI .....	49
Textile Air Hose - 300 PSI .....	50
Heavy Duty Air Hose - Up to 1000 PSI .....	51

## General Service & Air Hose Group

### General Purpose Air and Water Push-on Hose - 300 PSI



Reinforced with braided polyester yarns and designed for the quick and easy insertion of barbed fittings with no clamping or crimping required.

The reinforcement braid provides compression around the fitting up to normal working pressure.

Tube and cover are oil resistant and non conductive.

A durable and convenient hose.

Not recommended for gasoline.

Standard lengths of 250'.

#### Tech Data:

Tube:	Black, NBR (ARPM Class A)
Cover:	Black, NBR/PVC (ARPM Class A)
Reinforcement:	Braided polyester cord
Safety Factor:	4:1
Temperature:	-20°F to 180°F
Marking:	PUSH-ON 200 - <ID> - 300 PSI WP - LOT

General Purpose Air and Water Push-on Hose - 300 PSI			
Part Number	ID Size	OD Size	Weight lb/ft
H-AW-GENPUSH-04	1/4"	32/64"	0.102
H-AW-GENPUSH-06	3/8	42/64"	0.135
H-AW-GENPUSH-08	1/2"	52/64"	0.185
H-AW-GENPUSH-10	5/8"	60/64"	0.220
H-AW-GENPUSH-12	3/4"	1 6/64"	0.284

## General Service & Air Hose Group

### Multi Purpose Air and Fluid Hose (Water/Petroleum/Chemical) - 300 PSI



Principally designed for Air applications, but a good multi purpose hose for fluids including some petroleums.

Excellent quality multi-purpose hose for applications requiring oil resistance and higher working pressure. Tube handles oil-laden air, lubricating oils and mild alkalis or caustic solutions.

Working pressure 300 PSI except 2" size which is 250 PSI.

Standard lengths of 600 feet for sizes up to 1" ID. Size 1" is 400 feet. Size 1 1/4 is 300 feet, Size 1 1/2 is 250 feet and 2" is 200 feet.

#### Tech Data:

Tube: Black, NBR (ARPM Class B)  
Cover: Red, NBR/PVC (ARPM Class C)  
Reinforcement: Braided polyester cord  
Safety Factor: 3:1  
Temperature: -20°F to 180°F  
Marking: MULTI-PURPOSE AIR HOSE - <ID> - XXX PSI WP-LOT

Multi Purpose Air Water Petroleum Chemical Hose - 300 PSI				
Part Number	ID Size	OD Size	Std Length	Weight lb/ft
H-AWPC-MP-04	1/4"	9/16"	600	0.13
H-AWPC-MP-06	3/8	23/32"	600	0.22
H-AWPC-MP-08	1/2"	7/8"	600	0.31
H-AWPC-MP-12	3/4"	1 7/32"	600	0.48
H-AWPC-MP-16	1"	1 7/16"	400	0.66
H-AWPC-MP-20	1 1/4"	1 3/4"	300	0.69
H-AWPC-MP-24	1 1/2"	2"	250	0.80
H-AWPC-MP-32	2"	2 19/32	200	1.54

## General Service & Air Hose Group

### General Service Air & Fluid Hose - 250 PSI



Principally designed for Air applications, but a good multi purpose hose for fluids including water, some petroleums, and some chemicals.

Excellent quality multi-purpose hose for applications requiring oil resistance and higher working pressure. Tube handles oil-laden air, lubricating oils and mild alkalis or caustic solutions.

Working pressure 300 PSI except 2" size which is 250 PSI.

#### Tech Data:

Tube:	Black, EPDM
Cover:	Red or Black, SBR/EPDM
Reinforcement:	Braided polyester cord
Safety Factor:	3:1
Temperature:	-20°F to 180°F
Marking:	MULTI-PURPOSE AIR HOSE - <ID> - XXX PSI WP-LOT

General Service Air Water Petroleum Chemical Hose - 250 PSI				
Part Number	ID Size	OD Size	Std Length	Weight lb/ft
H-AWPC-GS-04-X	1/4"	33/64"	200/600	0.12
H-AWPC-GS-05-X	5/16	19/32"	600	0.15
H-AWPC-GS-06-X	3/8	43/64"	200/600	0.19
H-AWPC-GS-08-X	1/2"	53/64"	200/600	0.26
H-AWPC-GS-10-X	5/8"	63/64"	600	0.33
H-AWPC-GS-12-X	3/4"	1 9/64"	50/200/600	0.45
H-AWPC-GS-16-X	1"	1 27/64"	50/400	0.60
H-AWPC-GS-20-X	1 1/4"	1 47/64"	300	0.86
H-AWPC-GS-24-X	1 1/2"	2" 8/64"	250	1.37
H-AWPC-GS-32-X	2"	2 38/64"	200	1.61

For the "X" value in the part number: substitute "B" for Black and "R" for red color



## General Service & Air Hose Group

### General Service Hose Assembly - 250 PSI

#### 50 foot hose with crow's feet universal fittings



A tough, heavy duty, abrasion and ozone-resistant general service hose assembled with plated universal fittings, secured with a choice of two galvanized steel bands on each end or with crimp fittings. One male fitting and one female fitting.

Principally designed for Air applications, but a good multi purpose hose for fluids including water, some petroleums, and some chemicals.

#### Tech Data:

Tube:	Black, EPDM
Cover:	Red, SBR/EPDM
Reinforcement:	Braided polyester cord
Safety Factor:	3:1
Temperature:	-20°F to 180°F
Marking:	GENERAL SERVICE AIR AND WATER - <ID> - XXX PSI WP-LOT
Packaging:	Shrink wrapped

50 foot General Service Hose Assembly - 250 PSI			
Part Number	ID Size	OD Size	Weight lb/ft
Secured with barbed fittings and 2 band clamps at each end			
H-GS-ASSM-B-12	3/4"	1 3/16"	22
H-GS-ASSM-B-16	1"	1 3/8"	33
Secured with crimped fittings at each end			
H-GS-ASSM-C-12	3/4"	1 3/16"	22
H-GS-ASSM-C-16	1"	1 3/8"	33

## General Service & Air Hose Group

### Textile Air Hose - 300 PSI



Heavy duty, multi-purpose, textile reinforced hose for service where a tough and rugged hose is required.

Standard length is 100 feet.

Available in cut lengths. By-the-foot and by-the-yard.

#### Tech Data:

Tube: Black, Nitrile blend  
Cover: Yellow, EPDM/SBR blend  
Reinforcement: High tensile tire cord plies  
Safety Factor: 4:1  
Temperature: -40°F to 220°F  
Marking: HIGH TENSILE AIR HOSE - 300 PSI WP

Textile Air Hose - 300 PSI			
Part Number	ID Size	OD Size	Weight lb/ft
H-A-TAH-32	2"	2 19/32"	1.10
H-A-TAH-40	2 1/2"	3 3/16"	1.90
H-A-TAH-48	3"	3 45/64"	2.90
H-A-TAH-64	4"	4 23/32"	3.80

**For cut lengths add +15% to pricing**

## General Service & Air Hose Group

### HD Air Hose - up to 1000 PSI



Extreme Heavy duty for heavy construction, mining, heavy industry.

Braided steel wire reinforcement.

Standard length is 100 feet.

Available in cut lengths. By-the-foot and by-the-yard.

#### Tech Data:

Tube: Black, Nitrile/SBR blend  
Cover: Yellow, SBR blend (pinpricked for early failure indication)  
Reinforcement: Multiple steel wire braids  
Safety Factor: 4:1  
Temperature: -22°F to 185°F; intermittent at 250°F  
Marking: STEEL AIR HOSE XXXX PSI MAX WP

Textile Air Hose - Up to 1000 PSI				
Part Number	ID Size	OD Size	Working Pressure	Weight lb/ft
H-A-HDWIRE-AH-08	1/2"	57/64"	1000	0.31
H-A-HDWIRE-AH-12	3/4"	1 9/64"	1000	0.44
H-A-HDWIRE-AH-16	1"	1 27/64"	800	0.61
H-A-HDWIRE-AH-24	1 1/2"	1 31/32"	800	1.07
H-A-HDWIRE-AH-32	2"	2 33/64"	600	1.24
H-A-HDWIRE-AH-40	2 1/2"	3 5/64"	600	1.41
H-A-HDWIRE-AH-48	3"	3 5/8"	500	1.79
H-A-HDWIRE-AH-64	4"	4 51/64"	500	3.67

**For cut lengths add +15% to pricing**

## Hoses for Material Handling Applications

Polyurethane with PVC Cover Hose - up to 40 PSI .....	53
Black Polyurethane Hose with PVC cover and helix - up to 50 PSI .....	54
Lightweight Clear Polyurethane Hose with PVC helix - up to 20 PSI .....	55
Heavy Duty PVC Food Grade Suction Hose - 45 PSI .....	56
Heavy Duty PVC Food Grade Suction Hose with Grounding - 45 PSI .....	57
Polyurethane Food Grade Suction & Discharge Hose with Grounding - 45 PSI .....	58
Polyurethane Hose with blue PVC cover & PVC helix - 40 PSI .....	59
SBR Vacuum Hose with PVC helix - 45 PSI .....	60
Polyurethane High Flexibility Vacuum Hose with PVC helix - 30 PSI .....	61
Polyurethane Lined PVC hose with PVC Helix - 40 PSI .....	62
Synthetic Rubber Hot Tar & Asphalt Hose - 150 PSI .....	63
EPDM Hot Air Blower Hose - 150 PSI .....	64
Bulk Material Handling Discharge Hose - 75 PSI .....	65
Sandblast Hose - 150 PSI .....	66
Commodity Discharge Hose - 150 PSI .....	67
Commodity Suction Hose - 150 PSI .....	68
FDA Commodity Hose - 150 PSI .....	69
Elephant Trunk Hose - 50 PSI .....	70
Dredge Hose - 125 Hose .....	71
Concrete Placement Hose - Wire Reinforced - 1230 PSI .....	72
Textile Concrete Hose - 1230 PSI .....	73

## Material Handling Hose Group

### Polyurethane with PVC Cover Hose - up to 40 PSI



Abrasion resistant, polyurethane tube for material handling in dry applications, such as sandblast recovery lines, roof rock cleaning and other abrasive applications.

Constructed of static dissipating material that remains flexible at low temperature for ease of handling.

Sold in standard lengths only.

Standard lengths are 50 and 100 feet for sizes up to 5" ID. 20', 50' and 100' lengths for 6" size. 20' standard length for 8" size.

#### Tech Data:

Tube: Polyurethane, smooth  
Cover: Black, flexible PVC with black helix  
Safety Factor: 3:1  
Temperature: -40°F to 150°F

Polyurethane with PVC Cover - Material Handling Hose					
Part Number	ID Size	OD Size	Working Pressure	Vacuum in/HG	Weight lb/ft
H-M-PUPVC-32	2"	2.40"	40	30	0.51
H-M-PUPVC-40	2 1/2"	3.10"	40	30	0.77
H-M-PUPVC-48	3"	3.55"	40	30	0.87
H-M-PUPVC-64	4"	4.68"	35	30	1.55
H-M-PUPVC-80	5"	5.71"	30	28	2.30
H-M-PUPVC-96	6"	7.05"	30	28	3.40
H-M-PUPVC-128	8"	9.05"	30	28	4.88

**Material Handling Hose Group**

**Black Polyurethane with PVC Cover & Helix Hose - up to 50 PSI**



Abrasion resistant, polyurethane tube for material handling in dry applications, such as vacuum trucks, pneumatic conveying systems, fly ash collection and other abrasive applications.

Constructed of static dissipating material that remains flexible at low temperature for ease of handling.

Sold in standard lengths only.

Standard lengths are 50 and 100 feet for sizes up to 6" ID. 20' standard length for 8" size.

**Tech Data:**

Tube: Polyurethane, smooth  
Cover: Black, flexible PVC with black helix  
Safety Factor: 3:1  
Temperature: -40°F to 150°F

<b>Black Polyurethane with PVC Cover - Material Handling Hose</b>					
<b>Part Number</b>	<b>ID Size</b>	<b>OD Size</b>	<b>Working Pressure</b>	<b>Vacuum in/HG</b>	<b>Weight lb/ft</b>
H-M-BPUPVC-24	1 1/2"	1.86"	50	30	0.42
H-M-BPUPVC-32	2"	2.40"	40	30	0.60
H-M-BPUPVC-40	2 1/2"	3.10"	40	30	0.82
H-M-BPUPVC-48	3"	3.55"	40	30	1.20
H-M-BPUPVC-64	4"	4.68"	35	30	1.96
H-M-BPUPVC-80	5"	5.71"	35	28	2.45
H-M-BPUPVC-96	6"	7.05"	30	28	3.50
H-M-BPUPVC-128	8"	9.05"	30	28	5.99

## Material Handling Hose Group

### Lightweight Polyurethane Hose - up to 20 PSI



Extremely flexible hose, ideal for leaf collection, lawn cleaning and concrete surface preparation equipment.

The smooth bore provides high abrasion resistance and unrestricted flow.

Standard length is 50 feet.

#### Tech Data:

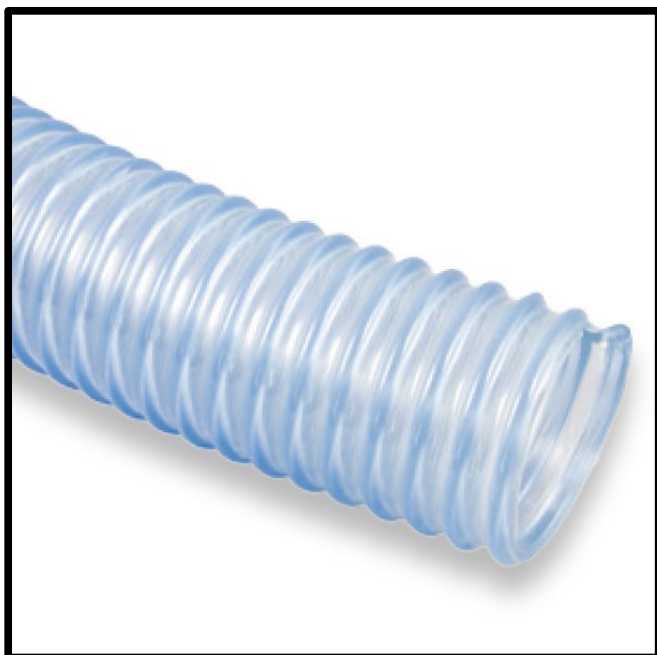
Construction: Clear, Polyurethane (ester based), exposed orange PVC right-hand helix  
 Safety Factor: 3:1  
 Temperature: -4°F to 150°F  
 Marking: LIGHTWEIGHT POLYURETHANE HOSE - <ID> - LOT

Clear Polyurethane with PVC Spiral - Material Handling Hose					
Part Number	ID Size	OD Size	Working Pressure	Vacuum in/HG	Weight lb/ft
H-M-PU-OR-24	1 1/2"	1.91"	20	22	0.23
H-M-PU-OR-32	2"	2.46"	15	21	0.32
H-M-PU-OR-40	2 1/2"	3.01"	9	19	0.34
H-M-PU-OR-48	3"	3.60"	8	19	0.48
H-M-PU-OR-64	4"	4.72"	7	13	0.70
H-M-PU-OR-80	5"	5.94"	6	10	0.89
H-M-PU-OR-96	6"	7.17"	5	7	1.15
H-M-PU-OR-128	8"	9.33"	3	5	1.65



## Material Handling Hose Group

### Heavy Duty PVC Food Grade Suction Hose - 45 PSI



Heavy duty food grade suction hose for dry or wet materials.

Hose complies with applicable FDA and 3A requirements and USDA for use in meat and poultry plants.

Clear PVC and clear helix allows for visual confirmation of flow.

Smooth bore eliminates build-up and clogging.

Highly flexible.

Standard length is 100 feet for sizes up to 6". 20' and 100' standard length for 6" and 8" size.

Bend radius is double the ID size.

#### Tech Data:

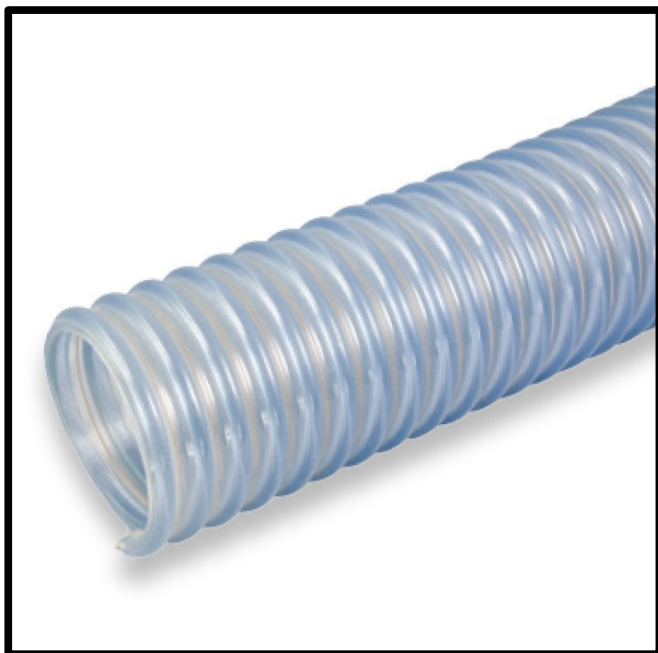
Construction: Clear PVC with exposed clear PVC right-hand helix  
 Safety Factor: 3:1  
 Temperature: -4°F to 150°F  
 Marking: FOOD GRADE SUCTION HOSE - <ID> - LOT  
 Compliance: FDA, USDA, 3A.  
 For full compliance data see [abthermal.com/fda-usda-food-hose.html](http://abthermal.com/fda-usda-food-hose.html)

Clear Food Grade PVC with PVC Spiral - Material Handling Hose					
Part Number	ID Size	OD Size	Working Pressure	Vacuum in/HG	Weight lb/ft
H-M-PVCFD-24	1 1/2"	1.82"	45	29	0.35
H-M-PVCFD-32	2"	2.35"	40	2	0.50
H-M-PVCFD-40	2 1/2"	2.87"	35	29	0.68
H-M-PVCFD-48	3"	3.50"	35	29	1.00
H-M-PVCFD-64	4"	4.63"	30	29	1.52
H-M-PVCFD-80	5"	5.63"	30	25	2.17
H-M-PVCFD-96	6"	6.73"	30	25	3.05
H-M-PVCFD-128	8"	9.04"	20	25	5.32



## Material Handling Hose Group

### Heavy Duty PVC Food Grade Suction Hose with Grounding - 45 PSI



Heavy duty food grade suction hose for dry or wet materials and a built-in grounding wire which eliminates static electricity when properly connected.

Hose complies with applicable FDA and 3A requirements and USDA for use in meat and poultry plants.

Clear PVC and clear helix allows for visual confirmation of flow.

Smooth bore eliminates build-up and clogging.

Highly flexible.

Standard length is 100 feet. 6" also available in 20' standard lengths.

Bend radius is double the ID size.

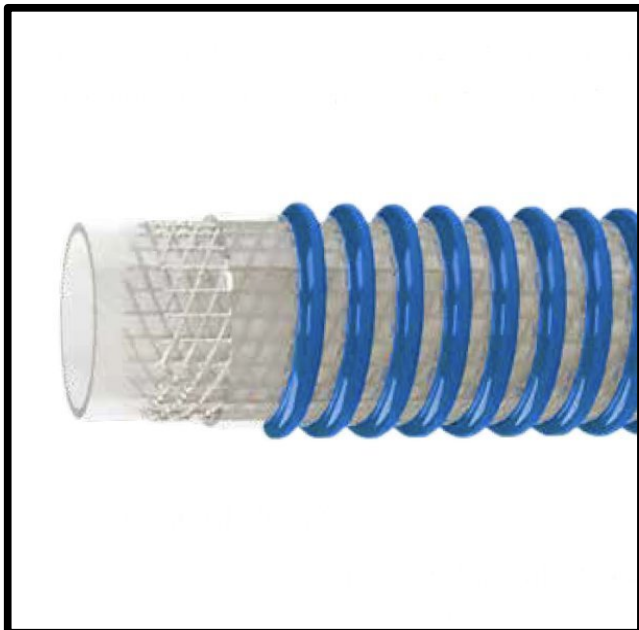
#### Tech Data:

Construction: Clear PVC with exposed clear PVC right-hand helix with grounding wire  
 Safety Factor: 3:1  
 Temperature: -4°F to 150°F  
 Marking: GROUNDED FOOD GRADE SUCTION HOSE - <ID> - LOT  
 Compliance: FDA, USDA, 3A.  
 For full compliance data see [abthermal.com/fda-usda-food-hose.html](http://abthermal.com/fda-usda-food-hose.html)

Clear Food Grade PVC with PVC Spiral & Grounding - Material Handling Hose					
Part Number	ID Size	OD Size	Working Pressure	Vacuum in/HG	Weight lb/ft
H-M-PVCFDG-24	1 1/2"	1.82"	45	29	0.44
H-M-PVCFDG-32	2"	2.35"	40	2	0.58
H-M-PVCFDG-40	2 1/2"	2.87"	35	29	0.75
H-M-PVCFDG-48	3"	3.50"	35	29	1.07
H-M-PVCFDG-64	4"	4.63"	30	29	1.52
H-M-PVCFDG-80	5"	5.63"	30	25	2.39
H-M-PVCFDG-96	6"	6.73"	30	25	3.12

## Material Handling Hose Group

### Polyurethane Food Grade Suction & Discharge Hose with Grounding - 45 PSI



Heavy duty food grade suction hose for dry or wet materials and a built-in grounding wire which eliminates static electricity when properly connected.

Hose complies with applicable FDA and 3A requirements and USDA for use in meat and poultry plants.

Clear PVC and clear helix allows for visual confirmation of flow.

Smooth bore eliminates build-up and clogging. Highly flexible.

Standard length is 100 feet.

Bend radius is double the ID size.

#### Tech Data:

Construction: Clear Polyurethane with blue PVC right-hand helix with grounding wire  
 Reinforcement: Synthetic yarn  
 Safety Factor: 3:1  
 Temperature: -40°F to 150°F  
 Marking: POLYURETHANE FOOD GRADE SUCTION/DISCHARGE HOSE - <ID> - LOT  
 Compliance: FDA, USDA  
 For full compliance data see [abthermal.com/fda-usda-food-hose.html](http://abthermal.com/fda-usda-food-hose.html)

Clear Food Grade Polyurethane with PVC Spiral & Grounding					
Part Number	ID Size	OD Size	Working Pressure	Vacuum in/HG	Weight lb/ft
H-M-SD-PUFDG-48	3"	3.78"	100	29	1.18
H-M-SD-PUFDG-64	4"	4.85"	75	29	1.58
H-M-SD-PUFDG-80	5"	5.80"	70	28	2.47
H-M-SD-PUFDG-96	6"	6.93"	70	28	2.86

Bend Radius: 3" hose is 10". 4" hose is 12". 5" hose is 14". 6" hose is 14"

## Material Handling Hose Group

### Polyurethane Lined blue PVC Hose with PVC helix - 40 PSI



Premium material handling hose with a thick smooth polyurethane tube.

Ideal for dry applications where high abrasion resistance is required.

Formulated for static dissipation.

Standard lengths of 100 feet for sizes up to 4". 20', 50' and 100' lengths for sizes 5" and 6".

High flexibility in cold temperatures.

#### Tech Data:

Tube: Clear Polyurethane liner tube  
Cover: Blue, HMW PVC, static dissipating  
Reinforcement: PVC helix  
Safety Factor: 3:1  
Temperature: -40°F to 150°F  
Marking: URE-HD-BLUE - <ID> - LOT

Polyurethane lined blue PVC with PVC helix - 40 PSI					
Part Number	ID Size	OD Size	Working Pressure	Vacuum in/HG	Weight lb/ft
H-M-PPU-PVC-32	2"	2.43	40	29	0.59
H-M-PPU-PVC-48	3"	3.70"	40	29	1.23
H-M-PPU-PVC-64	4"	4.80"	35	29	2.02
H-M-PPU-PVC-80	5"	5.80"	35	28	2.57
H-M-PPU-PVC-96	6"	6.87"	30	28	3.84

Bend Radius: 2" hose is 4". 3" hose is 6". 4" hose is 10". 5" hose is 15". 6" hose is 18"

Tube Thickness: 2" hose is 1.2mm. 3" hose is 1.8mm. 4" hose is 2.00mm. 5" hose is 2.0mm. 6" hose is 2.3mm

## Material Handling Hose Group

### SBR Vacuum Hose with PVC helix - 45 PSI



Specially compounded SBR to result in a vacuum hose for wet and dry material applications. Vacuum trucks, hydro-excavators, sewer and storm drain cleaning.

Static dissipating carbon black in the compound makes it suitable for sand, gravel, dry cement, metallic chips, grains and light abrasives.

Standard lengths are 100 feet for sizes up to 3". 50 and 100 feet standard lengths for sizes 4" to 6". 50 foot standard length for 8" size.

#### Tech Data:

Construction: SBR blended tube, static dissipating, with PVC right-hand helix  
Safety Factor: 3:1  
Temperature: -40°F to 158°F  
Marking: ULTRAVAC SBR - <ID> - LOT

SBR Vacuum Hose with PVC Helix - 45 PSI					
Part Number	ID Size	OD Size	Working Pressure	Vacuum in/HG	Weight lb/ft
H-M-SBR-PVC-24	1 1/2"	1.82	45	29	0.35
H-M-SBR-PVC-32	2"	2.43	40	29	0.52
H-M-SBR-PVC-40	2 1/2"	2.95	35	29	0.90
H-M-SBR-PVC-48	3"	3.50"	35	29	1.08
H-M-SBR-PVC-64	4"	4.63"	30	29	1.80
H-M-SBR-PVC-80	5"	5.76"	30	28	2.45
H-M-SBR-PVC-96	6"	6.73"	30	28	3.05
H-M-SBR-PVC-128	8"	9.04"	30	27	5.63

Bend Radius: 1 1/2" hose is 2". 2" hose is 2 1/2". 2 1/2" hose is 3". 3" hose is 4". 4" hose is 5". 5" hose is 6". 6" hose is 9". 8" hose is 15"

## Material Handling Hose Group

### Polyurethane High Flexibility Vacuum Hose with PVC helix - 30 PSI



Heavy-duty abrasion resistant suction hose for use in a variety of wet and dry vacuum applications including vacuum trucks, hydro-excavators, sewer and storm drain cleaners, street sweepers.

Can handle a variety of materials such as crushed stone, sand, gravels, dry-cement, gains and slurries.

The formulation of the tube includes compounds that make it permanently conductive for static dissipation.

Standard lengths are 100 feet for sizes up to 6". 50 and 100 feet standard lengths for size 8".

Not recommended for constant contact with fuels or petroleum products.

#### Tech Data:

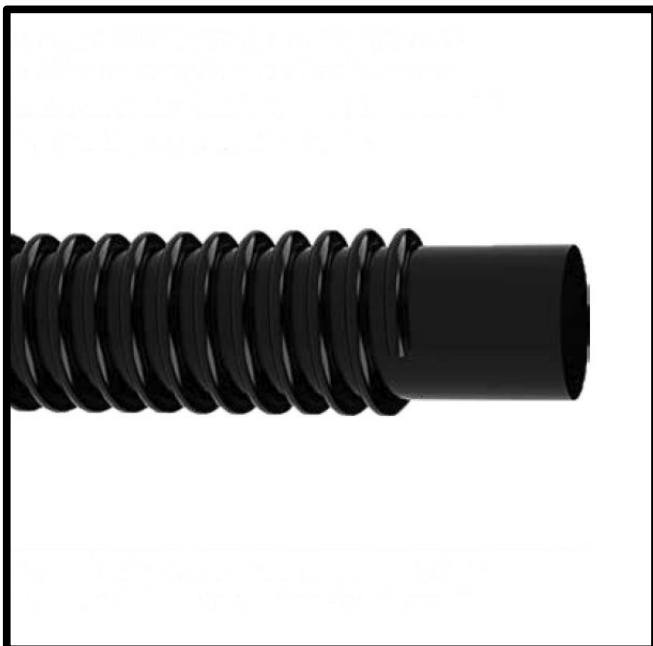
Construction: Polyurethane tube with a rigid PVC left-hand helix, conductive  
Safety Factor: 3:1  
Temperature: -40°F to 158°F  
Marking: POLYURETHANE SUCTION HOSE - <ID> - LOT

Polyurethane High Flexibility Vacuum Hose with PVC Helix - 30 PSI					
Part Number	ID Size	OD Size	Working Pressure	Vacuum in/HG	Weight lb/ft
H-M-PU-PVC-VAC-32	2"	2.56"	30	29	0.74
H-M-PU-PVC-VAC-48	3"	3.59"	30	29	1.11
H-M-PU-PVC-VAC-64	4"	4.73"	30	29	1.80
H-M-PU-PVC-VAC-80	5"	5.51"	30	27	2.32
H-M-PU-PVC-VAC-96	6"	6.76"	15	27	2.86
H-M-PU-PVC-VAC-128	8"	8.87"	15	27	4.27

Bend Radius: 1 1/2" hose is 2". 2" hose is 3". 2 1/2" hose is 3". 3" hose is 4". 4" hose is 5". 5" hose is 6". 6" hose is 9". 8" hose is 15"

## Material Handling Hose Group

### Polyurethane Lined PVC Hose with PVC helix - 40 PSI



Abrasion resistant suction hose for use in a variety of dry vacuum applications including sandblast recovery lines, roof rock clearing and other abrasive applications.

Polyurethane lined PVC tube with PVC right-hand helix.

The formulation of the tube includes compounds that make it permanently conductive for static dissipation.

Standard lengths are 50 and 100 feet for sizes up to 5". 20, 50 and 100 feet standard lengths for size 6". 20 and 50 feet standard length for 8" size.

#### Tech Data:

Construction: Polyurethane lined PVC tube with a rigid PVC right-hand helix, conductive  
Safety Factor: 3:1  
Temperature: -40°F to 150°F

Polyurethane Lined PVC Hose with PVC Helix - 40 PSI					
Part Number	ID Size	OD Size	Working Pressure	Vacuum in/HG	Weight lb/ft
H-M-PU-PVC-B-32	2"	2.40"	40	29	0.51
H-M-PU-PVC-B-40	2 1/2"	3.10"	40	29	0.77
H-M-PU-PVC-B-48	3"	3.55"	40	29	0.87
H-M-PU-PVC-B-64	4"	4.68"	35	29	1.55
H-M-PU-PVC-B-80	5"	5.71"	30	28	2.30
H-M-PU-PVC-B-96	6"	7.05"	30	28	3.40
H-M-PU-PVC-B-128	8"	9.05"	30	28	4.88

Bend Radius: 2" hose is 2". 2 1/2" hose is 4". 3" hose is 5". 4" hose is 6". 5" hose is 10". 6" hose is 12". 8" hose is 15".



## Material Handling Hose Group

### Synthetic Rubber Hot Tar & Asphalt Hose - 150 PSI



Rugged hose specifically designed for the transfer of petroleum based products such as high temperature asphalt, tar, hot oils.

Suitable for suction and discharge on rail cars, tank trucks, bulk stations, storage tanks and disposing units.

Standard lengths of 100 and 200 feet.

Available in cut lengths. By-the-foot and by-the-yard.

Working pressure of 150 PSI. Vacuum rating 29 in/HG.

#### Tech Data:

Tube: Black, synthetic rubber, heat and abrasion resistant  
 Cover: Black, anti-static, smooth with cloth. Abrasion, weather and heat resistant  
 Safety Factor: 4:1  
 Temperature: -20°F to 350°F (intermittent)  
 Marking: HOT TAR & ASPHALT HOSE 150 PSI WP

Synthetic Rubber Hot Tar Asphalt Hose - 150 PSI				
Part Number	ID Size	OD Size	Bend Radius	Weight lb/ft
H-M-TAR-32	2"	2.72"	10"	1.80
H-M-TAR-48	3"	3.78"	15"	2.94
H-M-TAR-64	4"	4.79"	20"	3.89

**For cut lengths add +15% to pricing**

## Material Handling Hose Group

### EPDM Hot Air Blower Hose - 150 PSI



Premium EPDM results in reliable service life for connecting the blower to flow lines on dry-bulk trailers.

Standard lengths of 100 and 200 feet.

Available in cut lengths. By-the-foot and by-the-yard.

Working pressure of 150 PSI. Vacuum rating 30 in/HG.

#### Tech Data:

Tube: Black, EPDM, high heat resistant  
Cover: Black or Brown, EPDM, high heat-resistant  
Safety Factor: 4:1  
Temperature: -40°F to 225°F (350F intermittent)  
Marking: HOT AIR BLOWER HOSE 150 PSI WP

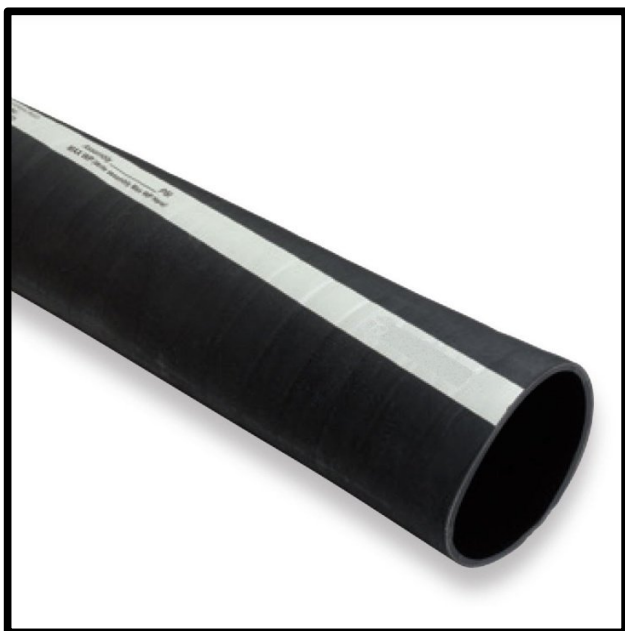
EPDM Hot Air Blower Hose - 150 PSI				
Part Number	ID Size	OD Size	Bend Radius	Weight lb/ft
H-M-HAIR-48	3"	3.51"	12"	1.75
H-M-HAIR-64	4"	4.56"	16"	2.40

**For cut lengths add +15% to pricing**



## Material Handling Hose Group

### Bulk Material Handling Discharge Hose - 75 PSI



NR/SBR blend, soft walled 2-ply hose for transfer of dry materials and slurries. Ideal for dry cement, pebble lime and other abrasive media.

Conductive for static dissipation.

Premium EPDM results in reliable service life for connecting the blower to flow lines on dry-bulk trailers.

Standard lengths of 100 feet.

Available in cut lengths. By-the-foot and by-the-yard.

Working pressure of 75 PSI.

#### Tech Data:

Tube:	Black, NR/SBR compound, abrasion resistant
Cover:	Black, NR/SBR, abrasion resistant
Reinforcement:	High tensile tire cord plies
Safety Factor:	4:1
Temperature:	-40°F to 180°F
Marking:	DRY CEMENT DELIVERY HOSE STATIC CONDUCTIVE TUBE 75 PSI WP

BULK MATERIAL HANDLING DISCHARGE HOSE - 75 PSI				
Part Number	ID Size	OD Size	Tube Thickness	Weight lb/ft
H-M-BDIS75-48-2	4"	4.44"	1/8"	1.72
H-M-BDIS75-48-3	4"	4.62"	3/16"	2.20
H-M-BDIS75-48-4	4"	4.79"	1/4"	2.61
H-M-BDIS75-48-2	5"	5.47"	1/8"	2.27
H-M-BDIS75-48-3	5"	5.62"	3/16"	2.75
H-M-BDIS75-48-4	5"	5.79"	1/4"	3.25

**For cut lengths add +15% to pricing**

## Material Handling Hose Group

### Sandblast Hose - 150 PSI



Can be used with grit, aluminum oxide, glass beads, etc., and is ideal for rugged service in shipyards and construction sites.

Conductive for static dissipation.

Standard lengths of 50 feet. 1 1/2" ID size standard length of 100 feet also available.

Working pressure of 150 PSI.

#### Tech Data:

Tube: Black, SBR/GUM, abrasion resistant, static-dissipating  
 Cover: Black, SBR, pinpricked for early failure detection  
 Reinforcement: High tensile tire cord plies  
 Safety Factor: 4:1  
 Temperature: -40°F to 190°F  
 Marking: PREMIUM GRADE SANDBLAST HOSE 150 PSI WP

Sandblast Hose - 150 PSI				
Part Number	ID Size	OD Size	Fabric Plies	Weight lb/ft
H-M-SBLAST-08	1/2"	1 1/8"	2	0.40
H-M-SBLAST-12	3/4"	1 1/2"	4	0.57
H-M-SBLAST-16	1"	1 7/8"	4	0.94
H-M-SBLAST-20	1 1/4"	2 1/8"	4	1.18
H-M-SBLAST-24	1 1/2"	2 3/8"	4	1.35

## Material Handling Hose Group

### Commodity Discharge Hose - up to 150 PSI



Soft wall hose with high abrasion resistance tube. Ideal for applications where discharging of abrasive media is required.

Conductive for static dissipation.

Standard lengths of 100 feet.

Available in cut lengths. By-the-foot and by-the-yard.

2 ply construction.

#### Tech Data:

Tube: Black, NR/SBR, abrasion resistant, static-dissipating  
 Cover: Black, SBR  
 Reinforcement: High tensile tire cord plies  
 Safety Factor: 4:1  
 Temperature: -40°F to 180°F  
 Marking: WET-DRY BULK COMMODITY DISCHARGE HOSE STATIC CONDUCTIVE  
 TUBE XXX PSI WP

Commodity Discharge Hose - Up to 150 PSI					
Part Number	ID Size	OD Size	Tube Thickness	Working Pressure	Weight lb/ft
H-M-COMMDIS-32	2"	2.70"	3/16"	150	1.51
H-M-COMMDIS-40	2 1/2"	3.20"	3/16"	125	1.82
H-M-COMMDIS-48	3"	3.72"	3/16"	125	2.20
H-M-COMMDIS-64	4"	4.70"	3/16"	100	2.79
H-M-COMMDIS-72	4 1/2"	5.20"	1/4"	75	3.40
H-M-COMMDIS-80	5"	5.70"	1/4"	75	3.78
H-M-COMMDIS-96	6"	6.70"	1/4"	75	4.06

**For cut lengths add +15% to pricing**

## Material Handling Hose Group

### Commodity Suction Hose - up to 150 PSI



Soft wall hose with high abrasion resistance tube. Ideal for applications where discharging of abrasive media is required. Not for food or potable water. Conductive for static dissipation.

Standard lengths of 100 feet up to 4" size. 50 foot standard length from 5" to 12" size. Available in cut lengths. By-the-foot and by-the-yard.

Sizes 5" to 12" are convoluted cover for extra flexibility.

2 ply construction.

Vacuum rating 28 in./HG for sizes 2" to 5". 25 in./HG for size 6" size. 20 in./HG for sizes 8" to 12".

#### Tech Data:

Tube:	Black, NR/SBR, abrasion resistant, static-dissipating
Cover:	Black, SBR
Reinforcement:	High tensile tire cord plies
Safety Factor:	4:1
Temperature:	-20°F to 180°F
Marking:	WET-DRY BULK COMMODITY SUCTION HOSE STATIC CONDUCTIVE TUBE XXX PSI WP

Commodity Discharge Hose - Up to 150 PSI					
Part Number	ID Size	OD Size	Tube Thickness	Working Pressure	Weight lb/ft
H-M-COMMSU-32	2"	2.79"	3/16"	150	1.87
H-M-COMMSU-40	2 1/2"	3.11"	3/16"	125	2.26
H-M-COMMSU-48	3"	3.72"	3/16"	125	2.64
H-M-COMMSU-64	4"	4.92"	3/16"	100	4.02
H-M-COMMSU-80	5"	5.06"	1/4"	75	5.18
H-M-COMMSU-96	6"	6.12"	1/4"	75	6.43
H-M-COMMSU-128	8"	9.01"	1/4"	50	9.89
H-M-COMMSU-160	10"	11.15"	1/4"	50	13.79
H-M-COMMSU-192	12"	13.23"	1/4"	50	17.41

**For cut lengths add +15% to pricing**

## Material Handling Hose Group

### FDA Commodity Hose - up to 150 PSI



The premier premium material handling hose in the industry. Suitable for abrasive materials, wet or dry.

Also used for food materials, flour, plastic pellets, sandblasting.

Tube meets FDA for food and potable water.

Standard lengths of 100 feet up to 4" size. 50 foot standard length from 5" to 8" size. 25 foot lengths for 10" and 12" sizes. Available in cut lengths. By-the-foot and by-the-yard.

Vacuum rating 30 in./HG for sizes 2" to 4". 28 in./HG for 5" size. 20 in./HG for sizes 8" to 12".

#### Tech Data:

Tube:	White, natural gum rubber
Cover:	Green, SBR
Reinforcement:	High tensile tire cord plies plus helix wire
Safety Factor:	4:1
Temperature:	-40°F to 190°F
Marking:	MATERIALS/FDA TRANSFER - NATURAL RUBBER TUBE

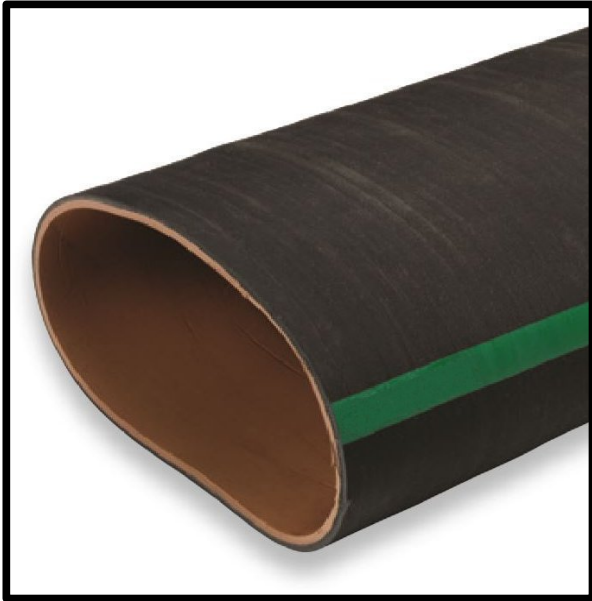
FDA Commodity Hose - Up to 150 PSI					
Part Number	ID Size	OD Size	Tube Thickness	Working Pressure	Weight lb/ft
H-M-COMM-32	2"	2.84"	1/4"	150	2.60
H-M-COMM-40	2 1/2"	3.40"	1/4"	150	3.10
H-M-COMM-48	3"	3.87"	1/4"	150	3.62
H-M-COMM-64	4"	4.93"	1/4"	100	5.57
H-M-COMM-80	5"	5.93"	1/4"	75	7.00
H-M-COMM-96	6"	6.92"	5/16"	50	7.25
H-M-COMM-128	8"	9.09"	3/8"	50	10.80
H-M-COMM-160	10"	11.31"	3/8"	50	15.10
H-M-COMM-192	12"	13.43"	3/8"	50	18.20

Bend radius: 2" is 5", 2 1/2" is 8", 3" is 10.5", 4" is 12", 5" is 13.5", 6" is 15", 8" is 17", 10" is 19", 12" is 25"

**For cut lengths add +15% to pricing**

## Material Handling Hose Group

### Elephant Trunk Hose - 50 PSI



Premium quality hose with 1/8" tube thickness for high abrasion and cut resistance. Ideal for gravity flow of materials such as concrete and abrasives.

Standard lengths of 50 feet for 8 and 10" size. Standard length of 25 feet for 12, 14 and 16" size

Available in cut lengths. By-the-foot and by-the-yard.

#### Tech Data:

Tube: Tan, pure gum  
Cover: Black, NR/SBR compound  
Reinforcement: High tensile synthetic plies  
Safety Factor: 3:1  
Temperature: -20°F to 180°F  
Marking: ELEPHANT TRUNK HOSE 50 PSI WP

Elephant Trunk Hose - Up to 50 PSI					
Part Number	ID Size	OD Size	Tube Thickness	Working Pressure	Weight lb/ft
H-M-ELPH-128	8"	8.51"	1/8"	50	3.84
H-M-ELPH-160	10"	10.51"	1/8"	50	5.50
H-M-ELPH-192	12"	12.51"	1/8"	50	6.00
H-M-ELPH-224	14"	14.51"	1/8"	50	7.00
H-M-ELPH-256	16"	16.51"	1/8"	50	8.15

Bend radius: 2" is 5", 2 1/2" is 8", 3" is 10.5", 4" is 12", 5" is 13.5", 6" is 15",  
8" is 17", 10" is 19", 12" is 25"

**For cut lengths add +15% to pricing**

## Material Handling Hose Group

### Dredge Hose - 125 PSI



Rugged and abrasion resistant tube and cover for flexible connections between pipes used in dredging applications.

Tube wall thickness 3/8".

Standard lengths of 50 feet.

Available in cut lengths. By-the-foot and by-the-yard.

#### Tech Data:

Tube: Black, SBR compound, 3/8" thick, abrasion resistant  
 Cover: Black, SBR compound, 3/32" thick, weather and abrasion resistant  
 Reinforcement: High tensile synthetic plies  
 Safety Factor: 3:1  
 Temperature: -20°F to 180°F  
 Marking: None

Dredge Hose - 125 PSI			
Part Number	ID Size	OD Size	Weight lb/ft
H-M-DREDGE-128	6 5/8"	8.00"	8.20
H-M-DREDGE-160	8 5/8"	10.19"	11.60
H-M-DREDGE-192	10 3/4"	12.31"	14.60
H-M-DREDGE-224	12 3/4"	14.50"	18.60

**For cut lengths add +15% to pricing**



## Material Handling Hose Group

### Concrete Placement Hose - Wire Reinforced - 1230 PSI / 85 BAR



Heavy-duty hose designed to handle the most abrasive applications and weather conditions.

Suitable for handling wet concrete in areas where flex is critical.

Ideal for use on high pressure concrete pumps or boom trucks where a tough, durable hose is required for high pressure concrete pumping and placing applications

Working pressure of 1230 PSI / 85 BAR. Burst pressure of 2650 PSI / 170 BAR. Meets ASME B3.27-2009 specifications

Standard lengths of 100 feet up to 4" size. 50 foot standard lengths for 5" size. Available in cut lengths. By-the-foot and by-the-yard.

#### Tech Data:

Tube:	Black, GUM/SBR blend, wear resistant
Cover:	Black, SBR, cut and gouge resistant
Reinforcement:	Multiple steel wire plies
Safety Factor:	2:1 (per ASME standards)
Temperature:	-40°F to 200°F
Marking:	CONCRETE PLACEMENT HOSE - WIRE XX" 1230 PSI (85 BAR) WP XX LBS/FT (F.W.C.) MEETS OR EXCEEDS ASME B30.27-2009

Concrete Placement Hose - Wire Reinforced - 1230 PSI / 85 BAR					
Part Number	ID Size	OD Size	Bend Radius	Working Pressure	Weight lb/ft
H-M-HD-CON-32	2"	2.75"	12"	1230	1.86
H-M-HD-CON-40	2 1/2"	3.37"	16"	1230	2.67
H-M-HD-CON-48	3"	3.94"	18"	1230	3.37
H-M-HD-CON-64	4"	5.06"	24"	1230	5.31
H-M-HD-CON-80	5"	6.12"	30"	1230	6.57

**For cut lengths add +15% to pricing**

## Material Handling Hose Group

### Textile Concrete Hose - 1230 PSI / 85 BAR



Heavy-duty hose designed to handle the abrasive applications such as plaster, grout and concrete.

Standard lengths of 100 feet.

50 foot lengths also available for 2" and 3" sizes.

Available in cut lengths. By-the-foot and by-the-yard.

Working pressure is 1230 PSI / 85 BAR. Burst pressure is 2650 PSI / 170 BAR

#### Tech Data:

Tube: Black, GUM/SBR blend, wear resistant  
 Cover: Black, SBR, cut and gouge resistant  
 Reinforcement: Multiple steel wire plies  
 Safety Factor: 2:1 (per ASME standards)  
 Temperature: -40°F to 200°F  
 Marking: CONCRETE PLACEMENT HOSE - WIRE XX" 1230 PSI (85 BAR) WP XX LBS/FT (F.W.C.) MEETS OR EXCEEDS ASME B30.27-2009

Textile Concrete Hose - 1230 PSI / 85 BAR WP				
Part Number	ID Size	OD Size	Bend Radius	Weight lb/ft
H-M-TCON-20	1 1/4"	2.00"	8"	0.86
H-M-TCON-24	1 1/2"	2.19"	10"	0.92
H-M-TCON-32	2"	2.76"	12"	1.45
H-M-TCON-40	2 1/2"	3.34"	14"	1.71
H-M-TCON-48	3"	4.00"	15"	2.40
H-M-TCON-56	3 1/2"	4.15"	16"	3.07
H-M-TCON-64	4"	5.16"	18"	4.06
H-M-TCON-72	4 1/2"	5.59"	21"	4.22
H-M-TCON-80	5"	6.30"	24"	5.60
H-M-TCON-96	6"	7.33"	30"	6.80

**For cut lengths add +15% to pricing**

### Hoses for Sanitary & Steam Applications

Steam Hose - EPDM - 250 PSI .....	75
Wine, Juice, Beverage Hose .....	76
Heavy Duty Wine, Juice, Beverage Hose .....	77

## Sanitary Hose Group

### Steam Hose - EPDM - 250 PSI



Rugged wire-braid reinforced steam hose for saturated and super-heated steam applications in a variety of applications including chemical plants, industrial plants, shipyards.

Standard lengths are 50 feet for sizes 1/2" through 2". 100 feet for lengths 2 1/2 and 3". 100 foot length also available for the 1 1/2" size.

Do not alternate use between steam and water.

Drain hose after each use for maximum hose life.

#### Tech Data:

Tube:	Black, EPDM, heat resistant
Cover:	Black, EPDM (pinpricked for early failure indication)
Reinforcement:	Multiple steel wire braids
Safety Factor:	4:1
Temperature:	-22°F to 185°F; intermittent at 250°F
Marking:	2 WIRE BRAID STEAM HOSE - 250 PSI WP - 450 DEGREES F

Steam Hose - EPDM - 250 PSI				
Part Number	ID Size	OD Size	Weight lb/ft	Bend Radius
H-S-STEAM-08	1/2"	0.94"	0.37	3"
H-S-STEAM-12	3/4"	1.25"	0.57	4"
H-S-STEAM-16	1"	1.50"	0.70	6"
H-S-STEAM-24	1 1/2"	2.06"	1.10	8"
H-S-STEAM-32	2"	2.69"	1.50	10"
H-S-STEAM-40	2 1/2"	3.22"	2.29	11"
H-S-STEAM-48	3"	3.81"	2.86	13 1/2"

## Sanitary Hose Group

### Wine - Juice - Beverage Hose - 150 PSI



This winery hose has a smooth tube and cover, formulated for the suction and delivery of wine, fruit juice, soft drinks and other beverages.

The hose has a white, smooth EPDM tube to ensure food quality and is odorless and does not alter taste.

Its high working temperature allows for the sterilization of the hose with steam at 230°F for 30 minutes. Flush prior to initial use.

Meets FDA title 21 part 177.2600(e) for liquid foods, BfR, ADI free, EC 1935 / 2004.

Standard length is 100 feet. Available in cut lengths: By-the-foot and by-the-yard.

#### Tech Data:

Tube:	White, EPDM
Cover:	Gray, EPDM
Reinforcement:	High strength synthetic plies with steel wire spirals
Pressure/Vacuum:	150 PSI WP / 29 in/HG
Safety Factor:	3:1
Temperature:	-40°F to 248°F
Marking:	WINERY HOSE 150 PSI (10BAR) W.P. TEMP.-40F TO 248F (-40 TO 120C) STERILIZATION AT 230F for 30 MINS FDA BFR ADI FREE

Wine / Juice / Beverage Hose - EPDM - 150 PSI				
Part Number	ID Size	OD Size	Weight lb/ft	Bend Radius
H-S-WJB-12	3/4"	1.25"	0.45	1.5"
H-S-WJB-16	1"	1.50"	0.54	1.75"
H-S-WJB-20 *	1 1/4"	1.72"	0.83	3"
H-S-WJB-24	1 1/2"	2.06"	0.93	4"
H-S-WJB-32	2"	2.69"	1.26	6"
H-S-WJB-40 *	2 1/2"	3.22"	1.75	7"
H-S-WJB-48	3"	3.81"	2.02	9"
H-S-WJB-64	4"	4.56"	3.09	12"

**For cut lengths add +15% to pricing**

## Sanitary Hose Group

### Heavy Duty Wine - Juice - Beverage Hose - 250 PSI



This heavy duty hose has a convoluted cover for long life in heavy duty daily use for the suction and delivery of wine, fruit juice, soft drinks and other beverages.

The hose has a white, smooth EPDM tube to ensure food quality and is odorless and does not alter taste. High working pressure to minimize transfer time.

The convoluted cover is also anti-microbial.

Its high working temperature allows for the sterilization of the hose with steam at 230°F for 30 minutes. Flush prior to initial use.

Meets FDA title 21 part 177.2600(e) for liquid foods, BfR, ADI free, EC 1935 / 2004.

Standard length is 100 feet. Available in cut lengths: By-the-foot and by-the-yard.

#### Tech Data:

Tube:	White, EPDM
Cover:	Purple, EPDM, polyurethane cover, convoluted, crushproof
Reinforcement:	High strength synthetic plies with polyamide spirals. 4" hose uses steel helix
Pressure/Vacuum:	250 PSI WP / 29 in/HG
Safety Factor:	3:1
Temperature:	-40°F to 248°F
Marking:	HD WINERY HOSE 250 PSI (17BAR) W.P. CRUSHPROOF TEMP.-40F TO 248F (-40 TO 120C) STERILIZATION AT 230F for 30 MINS FDA BFR ADI FREE

Heavy Duty Winery / Juice / Beverage Hose - 250 PSI				
Part Number	ID Size	OD Size	Weight lb/ft	Bend Radius
H-S-WJBHD-16	1"	1.50"	0.65	4"
H-S-WJBHD-20 *	1 1/4"	1.72"	0.73	5"
H-S-WJBHD-24	1 1/2"	2.06"	0.80	6"
H-S-WJBHD-32	2"	2.69"	1.03	8"
H-S-WJBHD-40 *	2 1/2"	3.22"	1.41	11"
H-S-WJBHD-48	3"	3.81"	1.95	12"
H-S-WJBHD-64 **	4"	4.56"	3.12	14"

**For cut lengths add +15% to pricing**

\*\* 4" is not crushproof

## Sanitary Hose Group

### Brewery Hose - 150 PSI



Brewery hose is a heavy-duty hose formulated for suction and delivery of beer, wine, alcohol, juice and other beverages.

The tube is a white, smooth BIIR (Butyl) rubber to ensure quality and is odorless and does not alter taste.

Its high working temperature allows for the sterilization of the hose with steam at 230°F for 30 minutes. Flush prior to initial use.

Meets FDA title 21 part 177.2600(e) for liquid foods, BfR, ADI free, EC 1935 / 2004.

Standard length is 100 feet. Available in cut lengths: By-the-foot and by-the-yard.

#### Tech Data:

Tube:	White, BIIR (BUTYL)
Cover:	Orange, EPDM
Reinforcement:	High strength synthetic plies with steel wire spirals
Pressure/Vacuum:	150 PSI WP / 29 in/HG
Safety Factor:	3:1
Temperature:	-40°F to 248°F
Marking:	BREWERS HOSE 150 PSI (!) BAR) W.P. TEMP -40F to 248F (-40C to 120C) STERILIZATION AT 230F FOR 30 MINS FDA BFR ADI FREE

Heavy Duty Brewery Hose - 150 PSI				
Part Number	ID Size	OD Size	Weight lb/ft	Bend Radius
H-S-BREWHD-12	3/4"	1.22"	0.48	1.5"
H-S-BREWHD-16	1"	1.45"	0.58	1.75"
H-S-BREWHD-20	1 1/4"	1.73"	0.74	3"
H-S-BREWHD-24	1 1/2"	1.97"	0.97	4"
H-S-BREWHD-32	2"	2.52"	1.26	6"
H-S-BREWHD-40 *	2 1/2"	3.16"	1.84	7"
H-S-BREWHD-48 *	3"	3.70"	2.20	9"
H-S-BREWHD-64 *	4"	4.72"	3.06	12"

**For cut lengths add +15% to pricing**



## Sanitary Hose Group

### Distillery Hose - 150 PSI



Distillery hose is specially formulated for the suction and delivery of alcohols up to 96%, wine, beer, potable water and other food category liquids.

The tube is a clear UHMW Polyurethane to ensure food quality and is both odorless and does not alter taste.

Its higher working temperature allows sterilization of the hose with steam at 230°F for 30 minutes. Flush prior to initial use.

Meets FDA title 21 part 177.2600(e) for liquid foods, BfR, KTW, EC 1935 / 2004.

Standard length is 100 feet. Available in cut lengths: By-the-foot and by-the-yard.

#### Tech Data:

Tube:	Clear, UHMWPE
Cover:	Green, EPDM
Reinforcement:	High strength synthetic plies with steel wire spirals
Pressure/Vacuum:	150 PSI WP / 29 in/HG
Safety Factor:	3:1
Temperature:	-4°F to 230°F
Marking:	DISTILLERY HOSE 150 PSI (!) BAR) W.P. TEMP -4F to 230F (-20C to 100C) STERILIZATION AT 230F FOR 30 MINS FDA BFR KTW

Distillery Hose - 150 PSI				
Part Number	ID Size	OD Size	Weight lb/ft	Bend Radius
H-S-DISTILL-08	1/2"	0.91"	0.39	2"
H-S-DISTILL-12	3/4"	1.22"	0.48	1.5"
H-S-DISTILL-16	1"	1.45"	0.58	1.75"
H-S-DISTILL-20 *	1 1/4"	1.73"	0.72	3"
H-S-DISTILL-24	1 1/2"	2.00"	0.91	4"
H-S-DISTILL-32	2"	2.64"	1.54	6"
H-S-DISTILL-40	2 1/2"	3.16"	1.69	7"
H-S-DISTILL-48	3"	3.63"	2.07	9"
H-S-DISTILL-64	4"	4.64"	3.03	12"

**For cut lengths add +15% to pricing**

\* Not a normally stock item - 1 week to produce

## Sanitary Hose Group

### Dairy Hose - 150 PSI



Distillery hose is specially formulated for the suction and delivery of alcohols up to 96%, wine, beer, potable water and other food category liquids.

The tube is a clear UHMW Polyurethane to ensure food quality and is both odorless and does not alter taste.

Its higher working temperature allows sterilization of the hose with steam at 230°F for 30 minutes. Flush prior to initial use.

Meets FDA title 21 part 177.2600(e) for liquid foods, BfR, KTW, EC 1935 / 2004.

Standard length is 100 feet. Available in cut lengths: By-the-foot and by-the-yard.

#### Tech Data:

Tube:	Clear, UHMWPE
Cover:	Green, EPDM
Reinforcement:	High strength synthetic plies with steel wire spirals
Pressure/Vacuum:	150 PSI WP / 29 in/HG
Safety Factor:	3:1
Temperature:	-4°F to 230°F
Marking:	DISTILLERY HOSE 150 PSI (!) BAR) W.P. TEMP -4F to 230F (-20C to 100C) STERILIZATION AT 230F FOR 30 MINS FDA BFR KTW

Dairy Hose - 150 PSI				
Part Number	ID Size	OD Size	Weight lb/ft	Bend Radius
H-S-DAIRY-12	3/4"	1.22"	0.48	1.5"
H-S-DAIRY-16	1"	1.45"	0.58	1.75"
H-S-DAIRY-20 *	1 1/4"	1.73"	0.72	3"
H-S-DAIRY-24	1 1/2"	2.00"	0.91	4"
H-S-DAIRY-32	2"	2.64"	1.54	6"
H-S-DAIRY-40 *	2 1/2"	3.16"	1.69	7"
H-S-DAIRY-48	3"	3.63"	2.07	9"
H-S-DAIRY-64	4"	4.64"	3.03	12"

**For cut lengths add +15% to pricing**

\* Not a normally stock item - 1 week to produce



## Industrial & Commercial Hoses

Fax Orders: 610-679-8592 Telephone Orders: 610-906-3549 [www.abthermal.com](http://www.abthermal.com)

---

### Water Hose Group

## Hoses for Firefighting Applications

Single Jacket Hose .....	83
Double Jacket Hose .....	85
Booster Hose .....	77
Rubber Covered .....	
MSHA Approved Hose .....	
Forrestry Hose .....	
Double Jacket MIL Spec .....	
 Rack & Reel .....	
 Rack Hose Assembly .....	

## Firehose Group

### Single Layer Firehose – 500 PSI - With or without couplings



Manufactured to NFPA1961, Factory Mutual and Underwriters Laboratories (UL) standards.

Superior strength and wear characteristics.

Black EPDM inner hose.

Aluminum, brass, Storz, Shank threaded, or Cam lock fittings/couplings.

Colors are White, Red, Yellow, Orange

Single Layer Firehose – 500 PSI				
Standard or Custom Length – No couplings or with couplings				
Part Number	Dimension	Aluminum Coupling	Brass Coupling	No Coupling
H-FH-1L-1.00-050-500-W	1" x 50' white	available	NA	available
H-FH-1L-1.00-050-500-C	1" x 50' color	available	NA	available
H-FH-1L-1.00-100-500-W	1" x 100' white	available	NA	available
H-FH-1L-1.00-100-500-C	1" x 100' color	available	NA	available
H-FH-1L-1.00-001-500-W	1" x 1' white	NA	NA	available
H-FH-1L-1.00-001-500-C	1" x 1' color	NA	NA	available
HF-FH-1.00-X	1" bowl size	available	\$ 90.00	← coupling
H-FH-1L-1.50-050-500-W	1.5" x 50' white	available	\$ 226.60	available
H-FH-1L-1.50-050-500-C	1.5" x 50' color	available	\$ 259.60	available
H-FH-1L-1.50-075-500-W	1.5" x 75' white	available	\$ 290.40	available
H-FH-1L-1.50-075-500-C	1.5" x 75' color	available	\$ 339.90	available
H-FH-1L-1.50-100-500-W	1.5" x 100' white	available	\$ 354.20	available
H-FH-1L-1.50-100-500-C	1.5" x 100' color	available	\$ 420.20	available
H-FH-1L-1.50-001-500-W	1.5" x 1' white	NA	NA	available
H-FH-1L-1.50-001-500-C	1.5" x 1' color	NA	NA	available
HF-FH-1.50-X	1.5" bowl size	available	available	← coupling

For "X" value in the coupling part number; substitute **A** for Aluminum & **B** for Brass. Please call for other couplings.  
For color "C" value in the part number; substitute **RD** for red, **YL** for yellow, **OR** for orange

Continued Next Page

**Single Layer Firehose – 500 PSI – (continued)**



<b>Single Layer Firehose – 500 PSI</b> <b>Standard or Custom Length – No couplings or with couplings</b>				
Part Number	Dimension	Aluminum Coupling	Brass Coupling	No Coupling
H-FH-1L-2.00-050-500-W	2" x 50' white	available	NA	available
H-FH-1L-2.00-050-500-C	2" x 50' color	available	NA	available
H-FH-1L-2.00-100-500-W	2" x 100' white	available	NA	available
H-FH-1L-2.00-100-500-C	2" x 100' color	available	NA	available
H-FH-1L-2.00-001-500-W	2" x 1' white	NA	NA	available
H-FH-1L-2.00-001-500-C	2" x 1' color	NA	NA	available
HF-FH-2.00-X	2.0" bowl size	available	NA	← coupling
H-FH-1L-2.50-050-500-W	2.5" x 50' white	available	available	available
H-FH-1L-2.50-050-500-C	2.5" x 50' color	available	available	available
H-FH-1L-2.50-100-500-W	2.5" x 100' white	available	available	available
H-FH-1L-2.50-100-500-C	2.5" x 100' color	available	available	available
H-FH-1L-2.50-001-500-W	2.5" x 1' white	NA	NA	available
H-FH-1L-2.50-001-500-C	2.5" x 1' color	NA	NA	available
HF-FH-2.50-X	2.5" bowl size	available	available	← coupling

For "X" value in the coupling part number; substitute **A** for Aluminum & **B** for Brass. Please call for other couplings.  
For color "C" value in the part number; substitute **RD** for red, **YL** for yellow, **OR** for orange

## Firehose Group

### Double Layer Firehose – 800 PSI - With or without couplings



Manufactured to NFPA1961, Factory Mutual and Underwriters Laboratories (UL) standards.

Superior strength and wear characteristics.

Black EPDM inner hose.

Aluminum, brass, Storz, Shank threaded, or Cam lock fittings/couplings.

Colors are White, Red, Yellow, Orange

<b>Double Layer Firehose – 800 PSI</b> <b>Standard or Custom Length – No couplings or with couplings</b>				
Part Number	Dimension	Aluminum Coupling	Brass Coupling	No Coupling
H-FH-2L-1.50-050-500-W	1.5" x 50' white	available	available	available
H-FH-2L-1.50-050-500-C	1.5" x 50' color	available	available	available
H-FH-2L-1.50-075-500-W	1.5" x 75' white	available	available	available
H-FH-2L-1.50-075-500-C	1.5" x 75' color	available	available	available
H-FH-2L-1.50-100-500-W	1.5" x 100' white	available	available	available
H-FH-2L-1.50-100-500-C	1.5" x 100' color	available	available	available
H-FH-2L-1.50-001-500-W	1.5" x 1' white	NA	NA	available
H-FH-2L-1.50-001-500-C	1.5" x 1' color	NA	NA	available
HF-FH-1.50-X	1.5" bowl size	available	available	← coupling
H-FH-2L-1.75-050-500-W	1.75" x 50' white	available	\$ call	available
H-FH-2L-1.75-050-500-C	1.75" x 50' color	available	\$ call	available
H-FH-2L-1.75-100-500-W	1.75" x 100' white	available	\$ call	available
H-FH-2L-1.75-100-500-C	1.75" x 100' color	available	\$ call	available
H-FH-2L-1.75-001-500-W	1.75" x 1' white	NA	NA	available
H-FH-2L-1.75-001-500-C	1.75" x 1' color	NA	NA	available
HF-FH-1.75-X	1.75" bowl size	available	\$ call	← coupling

For "X" value in the coupling part number; substitute **A** for Aluminum & **B** for Brass. Please call for other couplings.  
For color "C" value in the part number; substitute **RD** for red, **YL** for yellow, **OR** for orange

**Continued Next Page**



**Double Layer Firehose – 800 PSI – (continued)**



<b>Double Layer Firehose – 800 PSI</b> <b>Standard or Custom Length – No couplings or with couplings</b>				
Part Number	Dimension	Aluminum Coupling	Brass Coupling	No Coupling
H-FH-2L-2.0-050-500-W	2" x 50' white	available	NA	available
H-FH-2L-2.0-050-500-C	2" x 50' color	available	NA	available
H-FH-2L-2.0-100-500-W	2" x 100' white	available	NA	available
H-FH-2L-2.0-100-500-C	2" x 100' color	available	NA	available
H-FH-2L-2.0-001-500-W	2" x 1' white	NA	NA	available
H-FH-2L-2.0-001-500-C	2" x 1' color	NA	NA	available
HF-FH-2.0-X	2.0" bowl size	available	NA	← coupling
H-FH-2L-2.5-050-500-W	2.5" x 50' white	available	available	available
H-FH-2L-2.5-050-500-C	2.5" x 50' color	available	available	available
H-FH-2L-2.5-100-500-W	2.5" x 100' white	available	available	available
H-FH-2L-2.5-100-500-C	2.5" x 100' color	available	available	available
H-FH-2L-2.5-001-500-W	2.5" x 1' white	NA	NA	available
H-FH-2L-2.5-001-500-C	2.5" x 1' color	NA	NA	available
HF-FH-2.5-X	2.5" bowl size	available	available	← coupling

For "X" value in the coupling part number; substitute **A** for Aluminum & **B** for Brass. Please call for other couplings.  
 For color "C" value in the part number; substitute **RD** for red, **YL** for yellow, **OR** for orange

**Continued Next Page**

**Double Layer Firehose – 500 PSI – (continued)**



<b>Double Layer Firehose – 800 PSI</b> <b>Standard or Custom Length – No couplings or with couplings</b>				
Part Number	Dimension	Aluminum Coupling	Brass Coupling	No Coupling
H-FH-2L-3.0-050-500-W	3" x 50' white	available	call	available
H-FH-2L-3.0-050-500-C	3" x 50' color	available	call	available
H-FH-2L-3.0-100-500-W	3" x 100' white	available	call	available
H-FH-2L-3.0-100-500-C	3" x 100' color	available	call	available
H-FH-2L-3.0-001-500-W	3" x 1' white	NA	NA	available
H-FH-2L-3.0-001-500-C	3" x 1' color	NA	NA	available
HF-FH-3.0-X	3.0" bowl size	available	NA	← coupling

For "X" value in the coupling part number; substitute **A** for Aluminum & **B** for Brass. Please call for other couplings.  
For color "C" value in the part number; substitute **RD** for red, **YL** for yellow, **OR** for orange

<b>Double Layer Firehose – 4" – 600 PSI</b> <b>Standard or Custom Length – No couplings or with couplings</b>				
Part Number	Dimension	Aluminum or Storz Coupling	Brass Coupling	No Coupling
H-FH-2L-4.0-050-500-W	4" x 50' white	available	call	available
H-FH-2L-4.0-050-500-C	4" x 50' color	available	call	available
H-FH-2L-4.0-100-500-W	4" x 100' white	available	call	available
H-FH-2L-4.0-100-500-C	4" x 100' color	available	call	available
H-FH-2L-4.0-001-500-W	4" x 1' white	NA	NA	available
H-FH-2L-4.0-001-500-C	4" x 1' color	NA	NA	available
HF-FH-4.0-X	4.0" bowl size	available	call	← coupling

For "X" value in the coupling part number; substitute **A** for Aluminum & **B** for Brass. Please call for other couplings.  
For color "C" value in the part number; substitute **RD** for red, **YL** for yellow, **OR** for orange

## Firehose Group

### MSHA Mining Approved Firehose – 600 PSI With or without couplings



Manufactured to NFPA1961, Factory Mutual and Underwriters Laboratories (UL) standards.

Superior strength and wear characteristics.

Black EPDM inner hose.

Aluminum or brass fittings/couplings.

MSHA Mine approved.

MSHA Firehose – 600 PSI				
Standard or Custom Length – No couplings or with couplings				
Part Number	Dimension	Aluminum Coupling	Brass Coupling	No Coupling
H-FH-MSHA-1.50-050-500	1.5" x 50'	available	\$ call	available
H-FH-MSHA-1.50-100-500	1.5" x 100'	available	\$ call	available
H-FH-MSHA-1.50-001-500	1.5" x 1'	NA	\$ call	available
HF-FH-1.50-X	1.5" bowl size	available	\$ call	← coupling

For "X" value in the coupling part number; substitute **A** for Aluminum & **B** for Brass. Please call for other couplings.

## Tubing

### PVC

EPDM Signal Bell Tubing .....	90
EPDM SAE J1037 EPDM Windshield Washer Wiper Tubing .....	89
Clear PVC - FDA Grade - Flexible .....	83
Clear PVC Braided - FDA NSF-51 Grade .....	84
Heavy Wall PVC Braided - FDA NSF-51 & USDA 3A Grade .....	85
Laboratory Grade Clear PVC - FDA & USDA - Flexible .....	86
Teflon® Lined PVC Tubing .....	87
Polypropylene Tubing .....	88
Neoprene Tubing .....	91
Norprene® Tubing .....	92
Latex Tubing .....	94
Pure Gum Tubing - Wrapped .....	95
Pure Gum Tubing - Extruded .....	96
Viton® Tubing .....	93
PTFE Flexible Tubing .....	94

## Tubing Group

### EPDM Signal Bell Tubing



High quality abrasion and ozone resistant tubing for driveway signal bell.

Black EPDM, non-reinforced.

Tubing Group				
Signal Bell Tubing - 500 ft Coils				
Part Number	ID Size	OD Size	Working Pressure PSI	Weight in lbs
TU-SIGNAL	3/8"	0.625"	25	225

Sold in Full Coils Only

**Tubing Group**

**EPDM SAE J1037 EPDM Windshield Washer Wiper Tubing**



Designed to be used on windshield wiper systems, windshield washer fluid tanks, wet arm wiper tubing, and as vacuum tubing.

Meets SAE J1037 specifications.

Black EPDM, non-reinforced weather resistant rubber.

<b>Tubing Group</b> <b>SAE J1037 Windshield Washer Wiper Tubing - 50 ft Coils</b>				
<b>Part Number</b>	<b>ID Size</b>	<b>OD Size</b>	<b>Working Pressure PSI</b>	<b>Weight in lbs</b>
TU-SAEJ1037-0.125	1/8"	0.250	50	1.5
TU-SAEJ1037-0.156	5/32"	0.344"	50	2.5

**Sold in Full Coils Only**

## Tubing Group

### Clear PVC - FDA Grade - Flexible



Flexible FDA grade tubing suitable for use with foods and beverages.

Handles a broad range of chemicals, gases, and liquids.

Smooth inner wall allows excellent flow characteristics.

Temperature range 25°F to 150°F (-3°C to 65°C)

Construction: Crystal clear 75 durometer polyvinyl chloride extrusion.

Standard length is 100 feet in sizes up to 1" ID. Larger sizes are 50 foot coils.

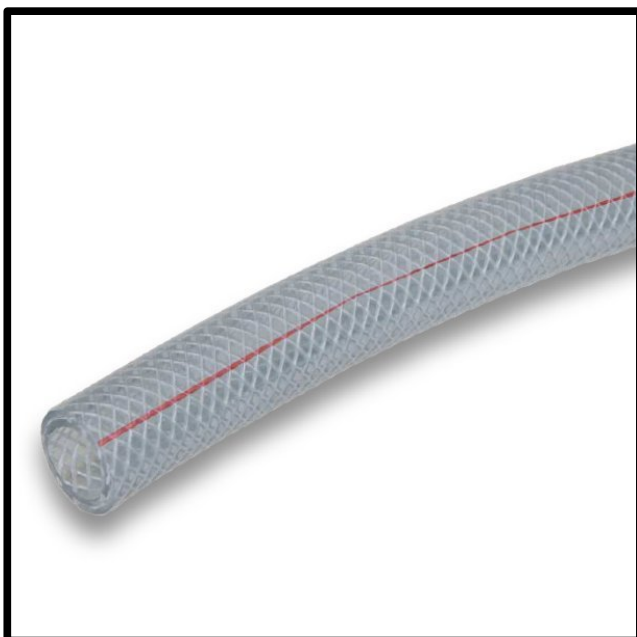
Tubing Group					
Clear PVC - FDA Grade - Flexible - 100 ft Coils (large sizes 50 ft coils)					
Part Number	ID Size	OD Size	Working Pressure lbs	Weight in lbs	Coil length
TU-PVC-HF-FDA-01-031	1/16"	1/8"	65	1	100 ft
TU-PVC-HF-FDA-02-01	1/8"	1/4"	65	2	100 ft
TU-PVC-HF-FDA-03-01	3/16"	5/16"	55	3	100 ft
TU-PVC-HF-FDA-04-01	1/4"	3/8"	50	4	100 ft
TU-PVC-HF-FDA-04-093	1/4"	7/16"	60	6	100 ft
TU-PVC-HF-FDA-04-02	1/4"	1/2"	70	8	100 ft
TU-PVC-HF-FDA-05-01	5/16"	7/16"	40	4	100 ft
TU-PVC-HF-FDA-05-093	5/16"	1/2"	50	7	100 ft
TU-PVC-HF-FDA-06-01	3/8"	1/2"	35	5	100 ft
TU-PVC-HF-FDA-06-093	3/8"	9/16"	50	7	100 ft
TU-PVC-HF-FDA-06-02	3/8"	5/8"	60	10	100 ft
TU-PVC-HF-FDA-07-01	7/16"	9/16"	40	5	100 ft
TU-PVC-HF-FDA-08-01	1/2"	5/8"	30	6	100 ft
TU-PVC-HF-FDA-08-093	1/2"	11/16"	40	11	100 ft
TU-PVC-HF-FDA-08-02	1/2"	3/4"	45	13	100 ft
TU-PVC-HF-FDA-10-02	5/8"	7/8"	40	16	100 ft
TU-PVC-HF-FDA-12-02	3/4"	1"	35	18	100 ft
TU-PVC-HF-FDA-14-02	7/8"	1 1/8"	30	21	100 ft
TU-PVC-HF-FDA-16-02	1"	1 1/4"	25	23	100 ft
TU-PVC-HF-FDA-20-02	1 1/4"	1 1/2"	25	14.5	50 ft
TU-PVC-HF-FDA-20-03	1 1/4"	1 5/8"	35	23	50 ft
TU-PVC-HF-FDA-24-03	1 1/2"	1 7/8"	30	17.5	50 ft
TU-PVC-HF-FDA-24-04	1 1/2"	2"	35	37	50 ft
TU-PVC-HF-FDA-32-04	2"	2 1/2"	30	48	50 ft

**Sold in Full Coils Only**



## Tubing Group

### Clear PVC Braided Tubing - FDA & NSF-51 - Flexible



Lightweight, non-marking, flexible standard wall thickness, clear, reinforced tubing for a wide range of applications including food, beverage, air and liquids.

FDA and NSF-51 grade.

Smooth inner wall allows excellent flow characteristics.

Temperature range 25°F to 150°F (-3°C to 65°C)

Construction: Clear reinforced PVC with blue tint. Spiral polyester yarns for reinforcement.

Standard coils are 300 feet up to size 1". Larger sizes the standard length is 100 feet. Also available in metric sizes.

<b>Tubing Group</b> <b>Clear PVC Braided - FDA / NSF-51 Grade - Flexible</b>					
Part Number	ID Size	OD Size	Working Pressure lbs	Weight in lbs	Coil length
TU-PVCRE-FDANSF-02-100	1/8"	0.325"	250	9	300 ft
TU-PVCRE-FDANSF-03-093	3/16"	0.375"	250	12	300 ft
TU-PVCRE-FDANSF-04-093	1/4"	0.437"	250	18	300 ft
TU-PVCRE-FDANSF-06-109	5/16"	0.531"	250	24	300 ft
TU-PVCRE-FDANSF-06-109	3/8"	0.593"	225	27	300 ft
TU-PVCRE-FDANSF-08-02	1/2"	0.750"	200	39	300 ft
TU-PVCRE-FDANSF-10-02	5/8"	0.875"	200	54	300 ft
TU-PVCRE-FDANSF-12-140	3/4"	1.031"	150	66	300 ft
TU-PVCRE-FDANSF-16-156	1"	1.312"	125	90	300 ft
TU-PVCRE-FDANSF-16-218	1 1/4"	1.687"	100	45	100 ft
TU-PVCRE-FDANSF-16-218	1 1/2"	1.937"	100	64	100 ft
TU-PVCRE-FDANSF-16-04	2"	2.500"	75	94	100 ft

**Sold in Full Coils Only**

## Tubing Group

### Laboratory Grade Clear PVC - FDA & USDA - Flexible



Highly flexible FDA and USDA grade tubing used in laboratories and with peristaltic pumps.

Handles a broad range of chemicals, gases, and liquids.

Smooth inner wall allows excellent flow characteristics.

Temperature range 25°F to 150°F (-3°C to 65°C)

Construction: Crystal clear 60 durometer polyvinyl chloride extrusion.

Standard length is 100 feet in sizes up to 5/8" ID. Larger sizes are 50 foot coils.

## Tubing Group

### Clear PVC - Laboratory / FDA / USDA Grade - Flexible 100 ft Coils (large sizes 50 ft coils)

Part Number	ID Size	OD Size	Working Pressure lbs	Weight in lbs	Coil Length
TU-PVC-HF-FDA-USDA-02-01	1/8"	1/4"	50	2	100 ft
TU-PVC-HF-FDA-USDA-03-01	3/16"	5/16"	35	3	100 ft
TU-PVC-HF-FDA-USDA-04-01	1/4"	3/8"	30	4	100 ft
TU-PVC-HF-FDA-USDA-06-01	3/8"	1/2"	22	5	100 ft
TU-PVC-HF-FDA-USDA-06-02	3/8"	5/8"	40	10	100 ft
TU-PVC-HF-FDA-USDA-08-01	1/2"	5/8"	20	6	100 ft
TU-PVC-HF-FDA-USDA-08-02	1/2"	3/4"	30	11	100 ft
TU-PVC-HF-FDA-USDA-10-02	5/8"	7/8"	26	16	100 ft
TU-PVC-HF-FDA-USDA-12-02	3/4"	1"	22	9	50 ft
TU-PVC-HF-FDA-USDA-16-02	1"	1 1/4"	18	11.5	50 ft

**Sold in Full Coils Only**

## Tubing Group

### Teflon® lined PVC Tubing - FDA



This FDA and chemical resistant tubing can be used with virtually all industrial solvents, chemicals and corrosive materials.

Smooth inner wall allows excellent flow characteristics.

Temperature range -40°F to 170°F  
(-40°C to 76°C)

Construction: Crystal flexible PVC covered Teflon tube.

Standard length is 100 feet.

<b>Tubing Group</b> <b>Teflon® lined PVC Tubing - FDA - 100 ft Coils</b>				
Part Number	ID Size	OD Size	Working Pressure lbs	Weight in lbs
TU-TEFLON-PVC-FDA-02-01	1/8"	0.250"	85	2
TU-TEFLON-PVC-FDA-03-01	3/16"	0.312"	75	3
TU-TEFLON-PVC-FDA-04-01	1/4"	0.375"	55	4
TU-TEFLON-PVC-FDA-06-093	3/8"	0.437"	50	5
TU-TEFLON-PVC-FDA-08-02	1/2"	0.750"	45	6

**Sold in Full Coils Only**

## Tubing Group

### FEP Fluoropolymer Tubing with PVC Cover



FDA and chemical resistant tubing can be used with virtually all industrial solvents, chemicals and corrosive materials.

Temperature range -40°F to 170°F  
(-40°C to 76°C)

Construction: FEP tube with clear flexible PVC cover.

Standard length is 50 feet.

Tubing Group				
FEP Tubing with Clear PVC cover - (50 ft coils)				
Part Number	ID Size	OD Size	Working Pressure lbs	Weight in lbs
TU-FEP-PVC-02-01	1/8"	1/4"	85	1
TU-FEP-PVC-03-01	3/16"	5/16"	75	1.5
TU-FEP-PVC-04-01	1/4"	3/8"	55	2
TU-FEP-PVC-06-093	3/8"	7/16"	50	2.5
TU-FEP-PVC-08-04	1/2"	3/4"	45	3

**Sold in Full Coils Only**

## Tubing Group

### PTFE Tubing



Flexible semi-clear provides high lubricity, high temperature range, wide chemical resistance and precision extruded tolerance.

Smooth inner wall allows excellent flow characteristics.

Temperature range -454°F to 500°F  
(-270°C to 260°C)

Construction: Crystal flexible PVC covered Teflon tube.

Standard length is 100 feet except 0.062ID x .125OD which is also available in 250 foot coil.

Tubing Group PTFE Tubing					
Part Number	ID Size	OD Size	Length		
TU-PTFE-030-090	.030"	0.090"	100		
TU-PTFE-01-02	1/16"	1/8"	100		
TU-PTFE-01-02	1/16"	1/8"	250		
TU-PTFE-01-04	1/16"	1/4"	100		
TU-PTFE-02-03	1/8"	3/16"	100		
TU-PTFE-02-04	1/8"	1/4"	100		

**Sold in Full Coils Only**

**Tubing Group**

**Hytrel® Air Brake Tubing – SAE J844 DOT FMVSS 106**



Brake tubing for truck, bus and commercial air brake systems.

Meets D.O.T. FMVSS 106 and SAE J844 Type B.

Temperature range -85°F to 200°F (-65°C to 76°C)

Construction: Special polyester elastomer tube and cover reinforced with polyester yarn.

Available in Black, Blue, Green, Orange and Red.

Standard lengths of 100 feet for all sizes. 500 feet for sizes 0.250" and 0.376". 250 feet for sizes 0.441" and 0.556".

<b>Tubing Group</b> <b>Hytrel® Air Brake Tubing – SAE J844 / DOT FMVSS 106</b>				
<b>Part Number</b>	<b>ID Size</b>	<b>OD Size</b>	<b>Working Pressure lbs</b>	<b>Weight in lbs/ft</b>
TU-HYTREL-ABT-OD06-X	0.250"	3/8"	350	0.03
TU-HYTREL-ABT-OD08-X	0.376"	1/2"	235	0.04
TU-HYTREL-ABT-OD10-X	0.441"	5/8"	225	0.08
TU-HYTREL-ABT-OD12-X	0.556"	3/4"	212	0.10

**Sold in Full Coils Only**

For the "X" value, use BK for Black, BL for Blue, GN for Green, OG for Orange and RD for Red.

## Tubing Group

### Latex Tubing



Extremely flexible and tear resistant tubing.

Manufactured from non-toxic ingredients to meet FDA standards.

Temperature range -30°F to 160°F (-34°C to 71°C)

Construction: Natural latex rubber. 35 durometer. Amber color is stock. Black is available for most sizes.

Special colors available.

Sold in  
Full Coils  
Only

<b>Tubing Group</b> <b>Latex Tubing ( 50 ft coils)</b>				
Part Number	ID Size	OD Size	Coil Size	Weight in lbs
TU-LATEX-02-01	1/8"	0.250"	100	2
TU-LATEX-03-01	3/16"	0.312"	100	3
TU-LATEX-04-01	1/4"	0.375"	100	3
TU-LATEX-04-02	1/4"	0.500"	100	7
TU-LATEX-05-01	5/16"	0.437"	100	6
TU-LATEX-06-01	3/8"	0.500"	100	5
TU-LATEX-06-02	3/8"	0.625"	50	5
TU-LATEX-08-02	1/2"	0.750"	50	3.5
TU-LATEX-08-02	5/8"	0.875"	50	7
TU-LATEX-12-02	3/4"	1.000"	50	8.6
TU-LATEX-16-02	1"	1.250"	50	12.5



## Tubing Group

### LLDPE Polyethylene Tubing



LLDPE Linear Low Density Polyethylene is a lightweight and economical tubing for air lines, food and beverage processing, instrumentation, etc.

Manufactured to FDA standards.

Temperature range -30F to 160F (-34C to 71C)

Construction: 100% virgin grade LLDPE.

Also available in black.

Standard lengths are 100 feet in all sizes and 500 feet for sizes up to 3/8" ID.

<b>Tubing Group</b> <b>LLDPE Polyethylene Tubing - (100 and 500 ft coils)</b>				
Part Number	ID Size	OD Size	Working Pressure lbs	Weight in lbs / 100 ft
TU-LLDPE-170-040	.170	.250"	100	1
TU-LLDPE-02-01	1/8"	.250"	100	2
TU-LLDPE-03-01	3/16"	.312"	100	2
TU-LLDPE-04-01	1/4"	.375"	100	3
TU-LLDPE-06-01	3/8"	.500"	75	4
TU-LLDPE-08-01	1/2"	.625"	62	5
TU-LLDPE-10-01	5/8"	.750"	50	6
TU-LLDPE-12-02	3/4"	1.000"	75	14

**Sold in Full Coils Only**

## Tubing Group

### PFA Fluoropolymer Tubing



Transparent, semi rigid, chemically inert tubing. Excellent electrical and weathering properties.

Manufactured from FDA grade materials.

Temperature range -275°F to 500°F  
(-463°C to 260°C)

Standard length is 50 or 100 foot coils.

<b>Tubing Group</b> <b>PFA Fluoropolymer Tubing – 50 and 100 ft Coils</b>				
Part Number	ID Size	OD Size	Working Pressure PSI	Weight in lbs/ft
TU-PFA-FDA-01	1/16"	0.125"	350	0.02
TU-PFA-FDA-02	1/8"	0.187"	230	0.03
TU-PFA-FDA-03	5/32"	0.250"	270	0.04
TU-PFA-FDA-04	1/4"	0.375"	240	0.05
TU-PFA-FDA-06	3/8"	0.500"	180	0.07
TU-PFA-FDA-08	1/2"	0.625"	140	0.09

**Sold in Full Coils Only**

## Tubing Group

### Polypropylene Tubing - FDA



Durable and heat resistant for hot liquids or gases.

FDA grade.

Temperature range -40°F to 220°F  
(-40°C to 104°C)

Construction: Extruded semi-rigid opaque white polypropylene.

Standard length is 100 feet in sizes up to 5/8" ID

<b>Tubing Group</b> <b>Polypropylene - FDA Grade - 100 ft Coils</b>				
Part Number	ID Size	OD Size	Working Pressure PSI	Weight in lbs
TU-POLYP-FDA-0170	0.170	0.250	149	1
TU-POLYP-FDA-02-01	1/8"	1/4"	272	2
TU-POLYP-FDA-03-01	3/16"	5/16"	196	2
TU-POLYP-FDA-04-01	1/4"	3/8"	157	2
TU-POLYP-FDA-06-01	3/8"	1/2"	112	3
TU-POLYP-FDA-08-01	1/2"	5/8"	87	4
TU-POLYP-FDA-10-02	5/8"	3/4"	71	5
TU-POLYP-FDA-12-02	3/4"	1"	110	14
TU-POLYP-FDA-16-02	1"	1 1/4"	87	18

**Sold in Full Coils Only**

## Tubing Group

### Polyurethane Tubing



Transparent, flexible, resilient, abrasion and impact resistant tubing.

Very abrasion resistant.

Oil resistant tubing used for a wide range of applications.

Temperature range -95°F to 185°F (-70°C to 85°C)

Construction: Ester based polyurethane compound will handle oils, greases and fuels.

Standard lengths of 100 feet. 50 foot coils available for sizes ½" and up.

Working pressure is rated at 70F

Tubing Group				
Polyurethane Tubing ( 100 and 50 ft coils)				
Part Number	ID Size	OD Size	Weight in lbs/ft	Working Pressure
TU-POLYU-02-01	1/8"	0.250"	0.02	130
TU-POLYU-03-01	3/16"	0.312"	0.03	75
TU-POLYU-04-01	1/4"	0.375"	0.04	65
TU-POLYU-04-02	1/4"	0.500"	0.08	130
TU-POLYU-05-01	5/16"	0.437"	0.04	65
TU-POLYU-06-01	3/8"	0.500"	0.05	60
TU-POLYU-06-02	3/8"	0.625"	0.10	100
TU-POLYU-08-01	1/2"	0.625"	0.06	35
TU-POLYU-08-02	1/2"	0.750"	0.13	60
TU-POLYU-10-02	5/8"	0.875"	0.15	60
TU-POLYU-12-02	3/4"	1.000"	0.18	50
TU-POLYU-16-02	1"	1.250"	0.23	40

**Sold in Full Coils Only**

## Tubing Group

### Polyurethane Reinforced Tubing



Transparent, flexible, resilient, abrasion and impact resistant tubing with a braid reinforcement located mid-wall for increased pressure usage.

Very abrasion resistant.

Oil resistant tubing used for a wide range of applications.

Temperature range -95°F to 185°F  
(-70°C to 85°C)

Construction: Ester based polyurethane compound will handle oils, greases and fuels.

Standard lengths of 100 feet.

Tubing Group				
Polyurethane Reinforced Tubing				
Part Number	ID Size	OD Size	Weight in lbs	Working Pressure
TU-POLYU-R-04-02	1/4"	0.470"	4	250
TU-POLYU-R-06-02	3/8"	0.630"	10	200
TU-POLYU-R-08-02	1/2"	0.750"	13	150
TU-POLYU-R-10-02	5/8"	0.905"	15	125
TU-POLYU-R-12-02	3/4"	1.025"	18	100
TU-POLYU-R-16-02	1"	1.300"	25	75

Sold in Full Coils Only

## Tubing Group

### PVDF Kynar® Tubing



Translucent, semi-rigid co-polymer tubing for higher pH chemical applications.

FDA and USP Class VI compatible.

Temperature range -25°F to 250°F  
(-31°C to 156°C)

Construction: Translucent white Kynar® extruded to tight tolerance.

Standard lengths of 50 and 100 feet.

Tubing Group PVDR Kynar®				
Part Number	ID Size	OD Size	Working Pressure PSI	Weight in lbs/ft
TU-PVDF-KYNAR-0170	0.170	¼"	240	0.03
TU-PVDF-KYNAR-02-01	1/8"	1/4"	375	0.04
TU-PVDF-KYNAR-03-01	3/16"	5/16"	300	0.04
TU-PVDF-KYNAR-04-01	1/4"	3/8"	240	0.06
TU-PVDF-KYNAR-05-01	5/16	0.437	210	0.06
TU-PVDF-KYNAR-06-01	3/8"	1/2"	180	0.07
TU-PVDF-KYNAR-08-01	1/2"	5/8"	145	0.09
TU-PVDF-KYNAR-10-01	5/8"	3/4"	120	0.11
TU-PVDF-KYNAR-12-01	3/4"	7/8"	100	0.13

**Sold in Full Coils Only**

## Tubing Group

### Neoprene Tubing



Oil resistant tubing used for a wide range of applications.

Temperature range -20°F to 180°F  
(-28°C to 82°C)

Construction: Black 60 durometer commercial grade non-reinforced Neoprene.

Standard length is 50 feet.

<b>Tubing Group</b> <b>Neoprene Tubing ( 50 ft coils)</b>			
Part Number	ID Size	OD Size	Weight in lbs
TU-NEOPRENE-02-01	1/8"	0.250"	1 1/2
TU-NEOPRENE-03-01	3/16"	0.312"	2
TU-NEOPRENE-04-01	1/4"	0.375"	2.5
TU-NEOPRENE-04-02	1/4"	0.500"	3.5
TU-NEOPRENE-05-01	5/16"	0.437"	3
TU-NEOPRENE-06-01	3/8"	0.500"	5
TU-NEOPRENE-06-02	3/8"	0.625"	8.5
TU-NEOPRENE-08-02	1/2"	0.750"	10
TU-NEOPRENE-10-02	5/8"	0.875"	11
TU-NEOPRENE-12-02	3/4"	1.000"	13
TU-NEOPRENE-14-02	7/8"	1.125"	14
TU-NEOPRENE-16-02	1"	1.250"	15

**Sold in Full Coils Only**



## Tubing Group

### Norprene® Elastomer Tubing



High quality multi-purpose tubing.

Excellent flexural fatigue characteristics.

Can be used for peristaltic pump applications.

Temperature range -75°F to 275°F  
(-59°C to 135°C)

Construction: Black 61 durometer non-reinforced synthetic compound.

Also available in white food grade.

Standard length is 50 feet.

<b>Tubing Group</b> <b>Norprene® Tubing ( 50 ft coils)</b>			
Part Number	ID Size	OD Size	Weight in lbs
TU-NORPRENE-02-01	1/8"	0.250"	1 1/2
TU-NORPRENE-03-01	3/16"	0.312"	2
TU-NORPRENE-04-01	1/4"	0.375"	2.5
TU-NORPRENE-04-02	1/4"	0.500"	3.5
TU-NORPRENE-05-01	5/16"	0.437"	3
TU-NORPRENE-06-01	3/8"	0.500"	5
TU-NORPRENE-06-02	3/8"	0.625"	8.5
TU-NORPRENE-08-02	1/2"	0.750"	10
TU-NORPRENE-10-02	5/8"	0.875"	11
TU-NORPRENE-12-02	3/4"	1.000"	13
TU-NORPRENE-16-02	1"	1.250"	15

**Sold in Full Coils Only**

## Tubing Group

### Nylon Tubing



Semi-rigid grade tubing for air, water, solvents, alkalies, oils, greases and petroleum products under pressure.

Temperature range -40°F to 225°F  
(-40°C to 107°C)

Construction: Natural Nylon 12  
extruded to tight tolerance.

Also available in black.

Standard length is 100 and 500 feet.

Tubing Group				
Nylon Tubing ( 100 and 500 ft coils)				
Part Number	ID Size	OD Size	WP	Weight in lbs 100 feet
TU-NYLON-091-X	.091"	0.125"	250	1
TU-NYLON-106-X	.106"	0.156"	250	1
TU-NYLON-139-X	.139"	0.187"	250	1
TU-NYLON-180-X	.180"	0.250"	250	1
TU-NYLON-232-X	.232"	0.312"	250	2
TU-NYLON-275-X	.275"	0.375"	200	3
TU-NYLON-376-X	.376"	0.500"	200	4

**Sold in Full Coils Only**

## Tubing Group

### Viton® Tubing



Exceptional chemical, oil and acid resistance and a wide temperature range.

High quality multi-purpose tubing.

Excellent flexural fatigue characteristics.

Can be used for peristaltic pump applications.

Temperature range -40°F to 400°F (-40°C to 204°C)

Construction: Black, 100% pure Viton rubber. 75 durometer. Also available in 60 durometer for peristaltic pump applications.

Standard length is 50 feet.

<b>Tubing Group</b> <b>Viton® Tubing ( 50 ft coils)</b>			
Part Number	ID Size	OD Size	Weight in lbs
TU-VITON-01-031	1/16"	0.125	0.5
TU-VITON-02-01	1/8"	0.250"	1 1/2
TU-VITON-03-01	3/16"	0.312"	2
TU-VITON-04-01	1/4"	0.375"	2.5
TU-VITON-05-01	5/16"	0.437"	3.0
TU-VITON-06-01	3/8"	0.500"	4.5
TU-VITON-06-02	3/8"	0.625"	7.5
TU-VITON-08-01	1/2"	0.625"	4.5
TU-VITON-08-02	1/2"	0.750"	10.0

**Sold in Full Coils Only**



## Industrial & Commercial Hoses

Fax Orders: 610-679-8592 Telephone Orders: 610-906-3549 [www.abthermal.com](http://www.abthermal.com)

---

## Tubing Group

### Pure Gum Tubing - Wrapped



Flexible tubing used in laboratories and other industrial applications including air, vacuum, gas flow and for impact bumpers.

Temperature range -20°F to 180°F  
(-28°C to 82°C)

Construction: Tan 45 durometer natural rubber manufactured with machine wrapped fabric finish. Use heavy wall for vacuum applications.

Some sizes also available in Red or Black.

Sold in  
Full Coils  
Only

<b>Tubing Group</b> <b>Pure Gum Tubing - Wrapped</b>				
Part Number	ID Size	OD Size	Coil Size	Coil Weight in lbs
TU-PGUM-W-02-02	1/8"	0.375"	100	4
TU-PGUM-W-03-02	3/16"	0.437"	50	3
TU-PGUM-W-04-03	1/4"	0.625"	25	7
TU-PGUM-W-05-04	5/16"	0.812"	25	6
TU-PGUM-W-06-04	3/8"	0.875"	25	5
TU-PGUM-W-08-04	1/2"	1.000"	50	3.5
TU-PGUM-W-08-04	5/8"	1.125"	25	7
TU-PGUM-W-08-04	3/4"	1.250"	50	8.6
TU-PGUM-W-08-04	1"	1.500"	50	12.5
TU-PGUM-W-08-04	1 1/4"	2.000"	50	12.5
TU-PGUM-W-08-04	1 1/2"	2.500"	10	12.5
TU-PGUM-W-08-08	2"	3.000"	10	12.5

## Tubing Group

### Pure Gum Tubing - Extruded



Very flexible high strength rubber tubing used in a wide variety of applications.

Handles dilute acids and alkalis.

Temperature range -20°F to 180°F  
(-28°C to 82°C)

Construction: Tan 45 durometer natural rubber extruded with a smooth tube and cover.

Standard length is 50 feet.

Sold in  
Full Coils  
Only

<b>Tubing Group</b> <b>Pure Gum Tubing - Extruded</b>			
Part Number	ID Size	OD Size	Full Coil Weight in lbs
TU-PGUM-E-02-01	1/8"	0.250"	1
TU-PGUM-E-03-01	3/16"	0.312"	1
TU-PGUM-E-04-02	1/4"	0.500"	4
TU-PGUM-E-06-02	3/8"	0.625"	5
TU-PGUM-E-08-02	1/2"	0.750"	6
TU-PGUM-E-08-02	5/8"	0.875"	7
TU-PGUM-E-08-02	3/4"	1.000"	8

### Hydraulic Hose Assemblies

SAE100R1AT/1SN Medium/High Pressure One Wire Braided Hose Assembly .....	106
SAE100R16 High Pressure Two Wire Braided Hose Assembly .....	107
SAE100R12 Extreme High Pressure Four Spiral Hose Assembly .....	108
SAE100R4 Low Pressure Hydraulic Return Line or Suction Hose Assembly .....	109
Universal Truck/Fleet/ Multi-Purpose Hose .....	110



## Hydraulic Hose Assembly Group

### SAE100R1AT/1SN – One Wire Braided Hose Assembly



- Medium/high pressure hydraulic hose assembly for all types of equipment use.
- Construction: Oil resistant tube and cover with one braid of high tensile steel wire. Includes rigid male pipe thread both ends.
- Made in USA.
- All hose assemblies are fabricated according to the Hose Safety Institute's guidelines.
- Base price is 1 foot of hose + both fittings professionally installed.
- Add additional length by-the-foot.
- Specific lengths rounded up to nearest foot for pricing.

SAE100R1AT/1SN – One Wire Braided Hose Assembly Medium/High Pressure General Purpose Hose Assemblies			
Part Number	ID Size	OD Size	WP
HHA-100R1AT-1SN-04-X	0.250"	0.530"	3270#
HHA-100R1AT-1SN-06-X	0.375"	0.690"	2615#
HHA-100R1AT-1SN-08-X	0.500"	0.810"	2320#

For the "X" value indicate the total length in feet

**Please call us for custom hose assemblies – any hose – any fitting**

## Hydraulic Hose Assembly Group

### SAE100R16 – Two Wire Braided Hose Assembly



- High pressure hydraulic hose assembly for all types of equipment use. Same bend radius as a 1 wire hose assembly.
- Construction: Oil resistant tube and cover with two braids of high tensile steel wire. Includes rigid male pipe thread both ends.
- Made in USA.
- All hose assemblies are fabricated according to the Hose Safety Institute's guidelines.
- Base price is 1 foot of hose + both fittings professionally installed.
- Add additional length by-the-foot.
- Specific lengths rounded up to nearest foot for pricing.

<b>SAE100R16 – Two Wire Braided Hose Assembly</b> <b>Medium/High Pressure General Purpose Hose Assemblies</b>			
Part Number	ID Size	OD Size	WP
HHA-100R16-04-X	0.250"	0.530"	5800#
HHA-100R16-06-X	0.375"	0.690"	5000#
HHA-100R16-08-X	0.500"	0.810"	4500#
HHA-100R16-12-X	0.750"	1.100"	3500#
HHA-100R16-16-X	1.000"	1.400"	2700#

For the "X" value indicate the total length in feet

**Please call us for custom hose assemblies – any hose – any fitting**

## Hydraulic Hose Assembly Group

### SAE100R12 – Four Wire Spiral Hose Assembly



- Extreme high pressure hydraulic hose assembly for all types of equipment use. Same bend radius as a 1 wire hose assembly.
- Construction: Oil resistant tube and cover with four spirals of high tensile steel wire. Includes rigid male pipe thread both ends.
- Made in USA.
- All hose assemblies are fabricated according to the Hose Safety Institute's guidelines.
- Base price is 1 foot of hose + both fittings professionally installed.
- Add additional length by-the-foot.
- Specific lengths rounded up to nearest foot for pricing.

<b>SAE100R12 – Four Spiral Hose Assembly</b> <b>Extreme High Pressure General Purpose Hose Assemblies</b>			
Part Number	ID Size	OD Size	WP
HHA-100R124-08-X	0.500"	0.940"	4000#
HHA-100R124-12-X	0.750"	1.210"	4000#
HHA-100R124-16-X	1.000"	1.500"	4000#
HHA-100R124-20-X	1.250"	1.850"	3000#
HHA-100R124-24-X	1.500"	2.100"	2500#
HHA-100R124-32-X	2.000"	2.630"	2500#

For the "X" value indicate the total length in feet

**Please call us for custom hose assemblies – any hose – any fitting**

## Hydraulic Hose Assembly Group

### SAE100R4 – Hydraulics Return or Suction Hose Assembly



- Low pressure 2 ply hydraulic return or petroleum products suction hose assembly for all types of equipment use.
- Construction: Oil resistant tube and cover with textile reinforcement and a wire helix for suction applications. Includes rigid male pipe thread both ends.
- Made in USA.
- All hose assemblies are fabricated according to the Hose Safety Institute's guidelines.
- Base price is 1 foot of hose + both fittings professionally installed.
- Add additional length by-the-foot.
- Specific lengths rounded up to nearest foot for pricing.

<b>SAE100R4 – Hydraulics Suction Hose Assembly</b> <b>Low Pressure General Purpose Return or Suction Hose Assemblies</b>			
Part Number	ID Size	OD Size	WP
HHA-100R4-12-X	0.750"	1.160"	350#
HHA-100R4-16-X	1.000"	1.460"	325#
HHA-100R4-20-X	1.250"	1.720"	250#
HHA-100R4-24-X	1.500"	1.960"	205#
HHA-100R4-32-X	2.000"	2.460"	225#

For the "X" value indicate the total length in feet

**Please call us for custom hose assemblies – any hose – any fitting**

## Hydraulic Hose Assembly Group

### Universal 1 Wire Braid Reinforced Hydraulic Hose Assembly for Truck/Fleet Oil, Transmission & Filtration Lines



- General purpose high temperature, medium pressure hose assembly for all types of mobile equipment use.
- Construction: Oil resistant tube and cover with textile reinforcement and a wire braid. Includes rigid male pipe thread both ends.
- Made in USA.
- All hose assemblies are fabricated according to the Hose Safety Institute's guidelines.
- Priced by-the-foot + both fittings professionally installed. These fittings are re-useable.
- Add additional length by-the-foot.
- Specific lengths rounded up to nearest foot for pricing.

<b>Universal 1 Wire Braid Hydraulic Hose Assembly</b> <b>General Purpose Oil, Transmission &amp; Filtration Line Use</b>			
Part Number	ID Size		WP
HHA-MP-04-X	0.250"		2000#
HHA-MP-05-X	0.312"		1500#
HHA-MP-06-X	0.375"		1500#
HHA-MP-08-X	0.500"		1250#
HHA-MP-10-X	0.620"		1000#
HHA-MP-12-X	1.750"		750#

For the "X" value indicate the total length in feet

**Please call us for custom hose assemblies – any hose – any fitting**

## Hydraulic Hose

SAE100R1AT/1SN Medium/High Pressure One Wire Braided Hose .....	106
SAE100R16 High Pressure Two Wire Braided Hose .....	107
SAE100R12 Extreme High Pressure Four Spiral Hose .....	108
SAE100R4 Low Pressure Hydraulic Return Line or Suction Hose .....	109
Universal Truck/Fleet/ Multi-Purpose Hose .....	110

**Hydraulic Hose Group**

**SAE100R1AT/1SN – One Wire Braided Hose**

- Medium/high pressure hydraulic hose assembly for all types of equipment use.
- Construction: Oil resistant tube and cover with one braid of high tensile steel wire.
- Made in USA.

<b>SAE100R1AT/1SN – One Wire Braided Hose</b> <b>Medium/High Pressure General Purpose Hose</b>					
Part Number	ID Size	OD Size	WP		Price per foot
HH-100R1AT-1SN-04-X	0.250"	0.530"	3270#		
HH-100R1AT-1SN-06-X	0.375"	0.690"	2615#		
HH-100R1AT-1SN-08-X	0.500"	0.810"	2320#		

For the "X" value indicate the total length in feet

**Please call us for custom hose assemblies – any hose – any fitting**



## Rubber Expansion Joints

Flanged Single Arch Expansion Joint .....	106
Flanged Double Arch Expansion Joints .....	107
Threaded Double Arch Expansion Joint .....	108



## Industrial & Commercial Hoses

Fax Orders: 610-679-8592 Telephone Orders: 610-906-3549 [www.abthermal.com](http://www.abthermal.com)

---

## Flanged Single Arch Expansion Joints

- Used as a connector between pipes. Excellent vibration and sound absorption. 4 way movement. -40F to 220F service temperature.
- Construction: Oil resistant neoprene, reinforced with nylon fabric and a spring steel wire. Single arch design supplied with forged carbon steel flanges.

Flanged Single Arch Expansion Joints					
Part Number	ID Size		WP/Vacuum	Weight	
REJ-SA-1.25	1.25"	6"	225# / 16	5.0	
REJ-SA-1.50	1.50"		225# / 16	6.1	
REJ-SA-2.00	2.00"		225# / 16	8.9	
REJ-SA-2.50"	0.500"		1250#	\$ 10.42	
HHA-MP-10-X	0.620"		1000#	\$ 12.02	
HHA-MP-12-X	1.750"		750#	\$ 14.16	

For the "X" value indicate the total length in feet

**Please call us for custom hose assemblies – any hose – any fitting**



## Industrial & Commercial Hoses

Fax Orders: 610-679-8592 Telephone Orders: 610-906-3549 [www.abthermal.com](http://www.abthermal.com)

---





## Industrial & Commercial Hoses

Fax Orders: 610-679-8592 Telephone Orders: 610-906-3549 [www.abthermal.com](http://www.abthermal.com)

---

### Standard Terms and Conditions

<https://abthermal.com/terms-and-conditions-product-orders-abtechnologygroup.html>



## Industrial & Commercial Hoses

Fax Orders: 610-679-8592 Telephone Orders: 610-906-3549 [www.abthermal.com](http://www.abthermal.com)

### New Account Credit Application

Sign and date if forwarding with standard credit reference attachments

Are you assigning AB Technology Group a Vendor Code? If yes, please provide: \_\_\_\_\_

Legal Business Name: \_\_\_\_\_

Address: \_\_\_\_\_ If a PO Box, please also provide street address: \_\_\_\_\_

\_\_\_\_\_  
\_\_\_\_\_  
\_\_\_\_\_

Phone \_\_\_\_\_ Fax: \_\_\_\_\_

Web Site Address : \_\_\_\_\_

U.S Companies, FED TAX ID NO. \_\_\_\_\_

Canadian Companies: Business Registration Number: \_\_\_\_\_

Provincial Tax Exempt? Yes \_\_\_\_\_ No \_\_\_\_\_ PST Number \_\_\_\_\_

GST Exempt? Yes: \_\_\_\_\_ No: \_\_\_\_\_ GST Number: \_\_\_\_\_

Owner / President / GM \_\_\_\_\_ Title \_\_\_\_\_

Form of business: ☐ Corporation ☐ Limited Liability Company or Limited Partnership  
☐ General Partnership ☐ Unincorporated entity

Type of business/industries served: \_\_\_\_\_

Accounts Payable contact: \_\_\_\_\_ Tel: \_\_\_\_\_

Accounts Payable E-mail: \_\_\_\_\_

Estimated annual purchases \$ \_\_\_\_\_ 30 day revolving credit amount desired: \$ \_\_\_\_\_

Bank reference (name/address/phone number/bank account #)

\_\_\_\_\_  
\_\_\_\_\_  
\_\_\_\_\_  
\_\_\_\_\_

Trade Credit References (name/address/contact information/phone/fax)

\_\_\_\_\_  
\_\_\_\_\_  
\_\_\_\_\_  
\_\_\_\_\_  
\_\_\_\_\_

\_\_\_\_\_  
Authorizing Signature

\_\_\_\_\_  
Date

By signing this form, the applicant agrees that AB Technology Group may conduct a credit check and exchange information with other parties for the purpose of establishing credit worthiness

Please Note: Standard Credit Terms are 1% 10, Net 30 days