

Silicone Foam Sleeve High Temperature, Heat Resistant

460°F / 237°C: Continuous Rating – Higher Temperature for Shorter Periods
High Insulation Value for Hoses Tubing & Pipes



Silicone Closed Cell Foam sleeve is designed as a high thermal insulation sleeve for hoses and pipes to preserve the temperature of flowing liquids and gases.

May be covered with other sleeving such as nylon for abrasion protection.

Available in Oxide-red. Other colors may be available by custom run and may require minimums.

Density is 0.55 g/cm³. 0.32 oz/in³.

Standard carton is 18" x 18" x 20" and weight is 40 pounds.

FlameShield™ Silicone Closed Cell Sponge Sleeve High Temperature & Heat Resistant – High Thermal Insulation Value			
Part Number	Nominal ID	Wall Thickness	Length / Price per Carton
S-SR-SF-M013-08	½"	½"	72' / \$ call
S-SR-SF-M019-12	¾"	½"	59' / \$ call
S-SR-SF-M025-16	1"	½"	49' / \$ call
S-SR-SF-M032-20	1 ¼"	¾"	26' / \$ call
S-SR-SF-M038-24	1 ½"	¾"	23' / \$ call
S-SR-SF-M044-28	1 ¾"	¾"	19' / \$ call

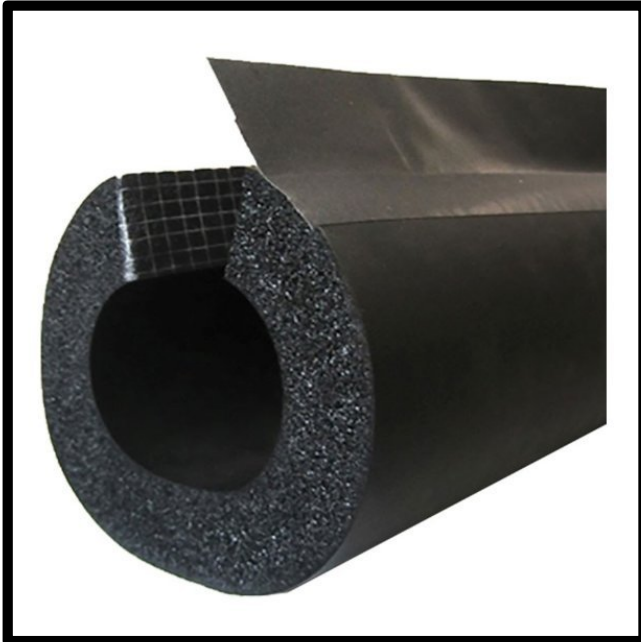
This product may available in By-The-Foot lengths – please inquire

Other IDs, wall thickness, lengths and colors are available

Closed Cell Foam Insulation Sleeve

220°F / 104°C: Continuous Rating – Higher Temperature for Shorter Periods

High Insulation Value for Hoses Tubing & Pipes



- R-3 insulation value.
- Condensation prevention solution for water and refrigeration lines.
- Split sleeve with seam adhesive plus adhesive flap.
- 6 foot / 1.82 metre lengths.
- Mold and Mildew resistant.
- Compatible with heating cables and tapes for freeze protection.
- 0.5" / 13mm wall thickness.
- Highly flexible and conformable.
- ID of sleeve is designed to accommodate pipe plus heating cable/tape when used in size combination recommended in table below.

FlameShield™ Closed Cell Foam Sleeve High Thermal Insulation Value - Pipe Heat Retention & Freeze Protection			
Part Number	Nominal Pipe OD	Actual Sleeve ID	Price per 6' / 1.82 m stick
S-INSULPIPE-0875	½" to 5/8"	7/8"	\$ 34.00
S-INSULPIPE-1125	¾" to 7/8"	1 1/8"	\$ 38.00
S-INSULPIPE-1375	1"	1 3/8"	\$ 44.00
S-INSULPIPE-1625	1 1/8"	1 5/8"	\$ 48.00
S-INSULPIPE-2000	1 3/8"	2"	\$ 54.00
S-INSULPIPE-2125	1 5/8"	2 1/8"	\$ 58.00
S-INSULPIPE-2375	2"	2 3/8"	\$ 78.00
S-INSULPIPE-2625	2 1/8"	2 5/8"	\$ 88.00
S-INSULPIPE-2875	2 3/8"	2 7/8"	\$ 96.00
S-INSULPIPE-3125	2 5/8"	3 1/8"	\$ 102.00
S-INSULPIPE-3500	2 7/8"	3 1/2"	\$ 108.00
S-INSULPIPE-3625	3 1/8"	3 5/8"	\$ 110.00
S-INSULPIPE-4125	3 1/2"	4 1/8"	\$ 134.00
S-INSULPIPE-4500	4"	4 1/2"	\$ 138.00