

Section 12 Metal Foils

- Stainless Steel 304 / 309 / 321

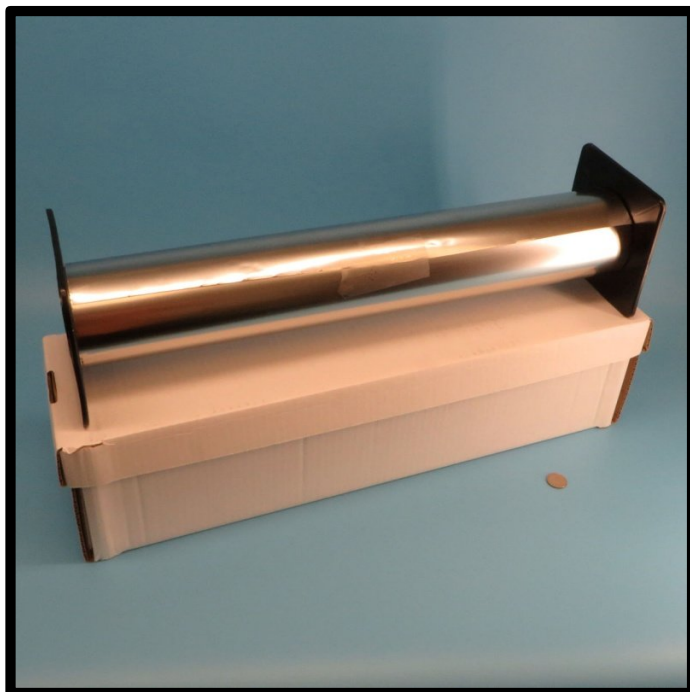


High Temperature, Heat, Flame, Fire, Molten Metal & Weld Splatter Protection Materials

Fax Orders: 610-340-9054 Telephone Orders: 610-906-3549 orders@abthermal.com

Stainless Steel Foil

304 / 309 / 321



Stainless steel foils can be used to form shields and barriers for protection of equipment in high heat environments.

Stainless steel foil is also excellent as a tool wrap, to protect tools from environmental factors. Resistant to corrosion and staining. Used to protect machine tools during heat treatment operations.

Stainless steel foil rolls are .002" thick by 24" wide. The cores are 3" ID. Available roll length is 50 feet and 100 feet.

Certification is available.

Maximum continuous temperature ratings:

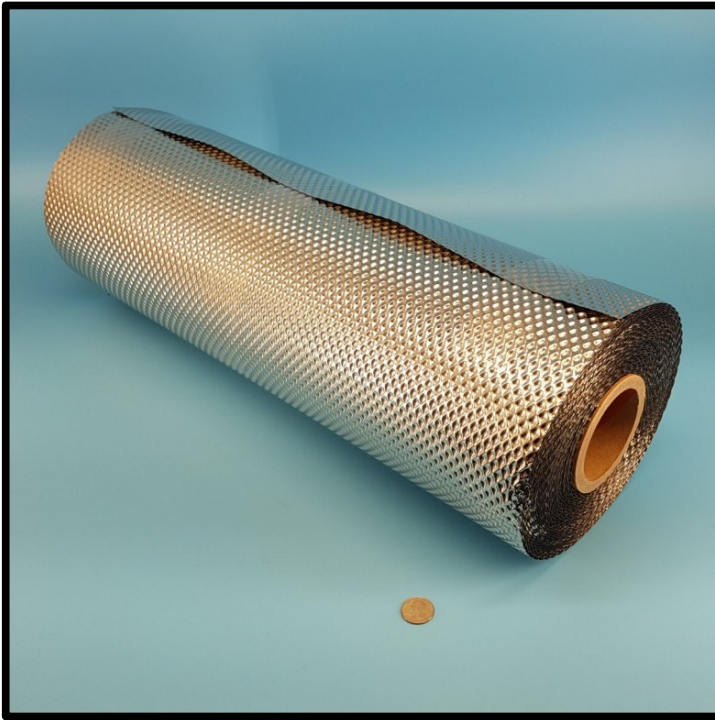
304 Annealed Stainless Steel: 1800°F

321 Annealed Stainless Steel: 2000°F

309 Annealed Stainless Steel: 2240°F

FlameShield™ Stainless Steel Foil	
Part Number	Size
FOIL-SS-304-M00005-002-24-50	.002 x 24" x 50'
FOIL-SS-304-M00005-002-24-100	.002 x 24" x 100'
FOIL-SS-309-M00005-002-24-50	.002 x 24" x 50'
FOIL-SS-321-M00005-002-24-50	.002 x 24" x 50'
FOIL-SS-321-M00005-002-24-100	.002 x 24" x 100'

EDT™ Embossed / Dimpled / Texturized Stainless Steel Foils
304, 309, 316, 321 & 347 Austenitic Stainless Steel
410, 420 & 446 Ferritic Stainless Steel



EDT™ Stainless steel embossed / dimpled / texturized foil is a flexible material to use on removeable blankets and shields. Popular on engine exhaust systems as a contact shield covering hot piping.

Provides greatly increased surface area and improves rigidity and handleability.

Unlike plain foil, it does not easily crease and can be flexed without it taking a set.

Available thicknesses are .002", .004", .005", .006" and .008".

Typical roll width is 24" wide. Maximum length is 150 feet. The roll core is 3" ID.

Some popular sizes and patterns are available by the foot, metre or roll.

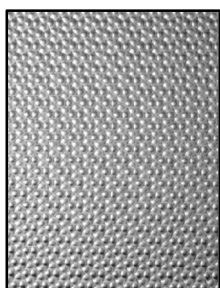
6 patterns are available: A1, B3, C3, D6, E6

Certification is available.

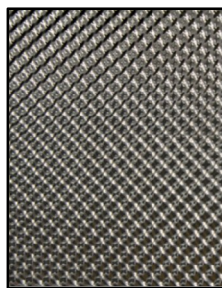
EDT™ Embossed / Dimpled / Texturized Stainless Steel Foils (Continued)



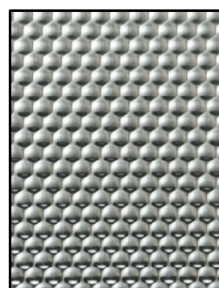
A1



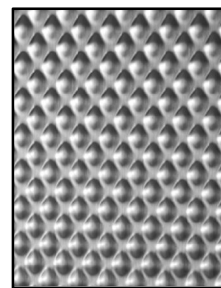
B3



C3



D6



E6

Patterns

Our most popular version:

EDT™ 309 Stainless Steel Foil Embossed / Dimpled / Texturized	
Part Number	Size
FOIL-SS-309EDT-E6-002-24-150	.002 x 24" x 150'
FOIL-SS-309EDT-E6-002-24-FT-X	.002 x 24" x 1'
FOIL-SS-309EDT-E6-002-24-YD-X	.002 x 24" x 3'
FOIL-SS-309EDT-E6-002-24-M-X	.002 x 24" x 1 metre

For the "X" value, specify the length in feet, yards or metres

A \$5.00 cutting fee is applied to any cut length

All other types, thicknesses, and patterns; please call for pricing

Intentionally Blank